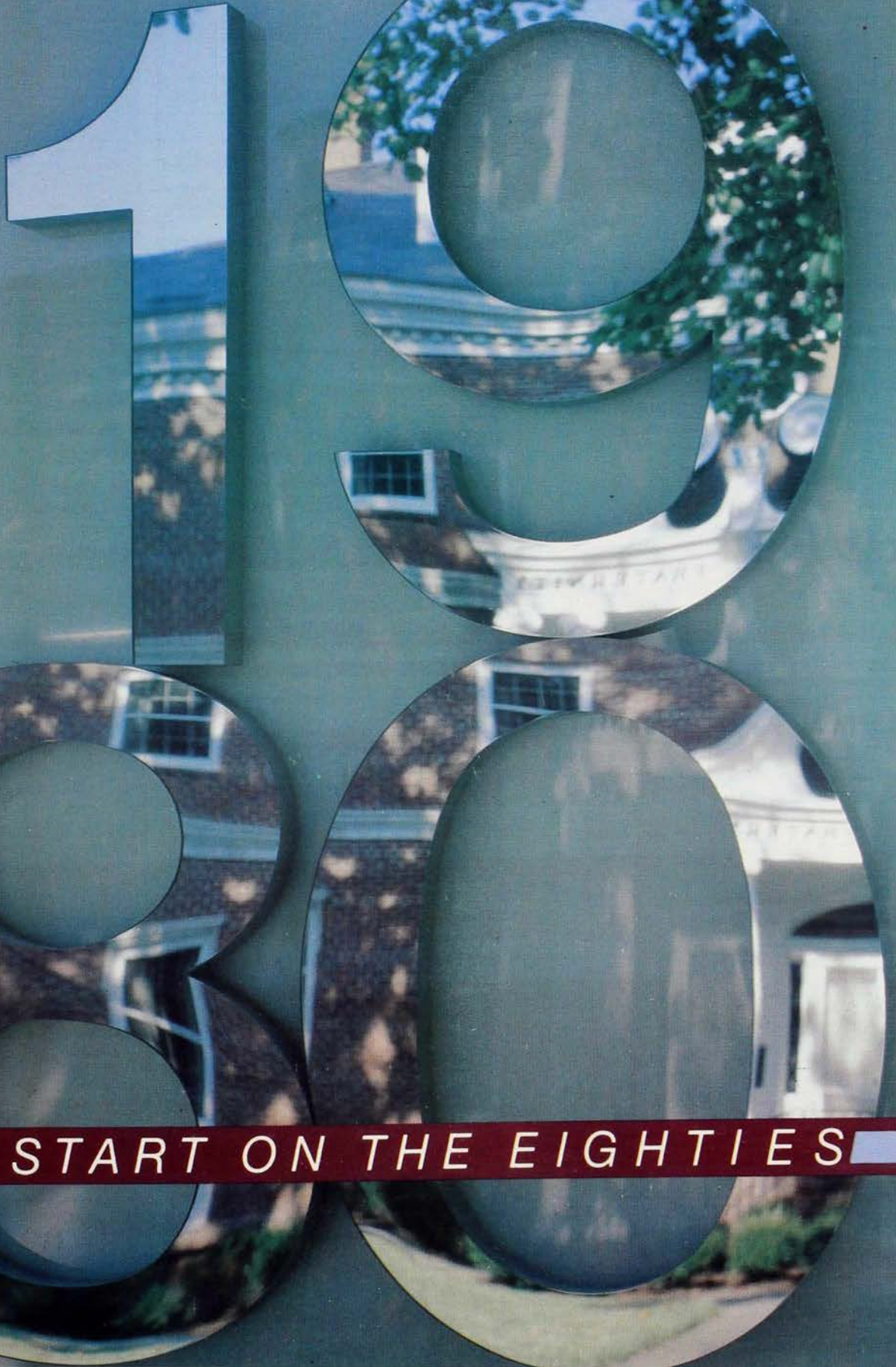


# SHIELD & DIAMOND

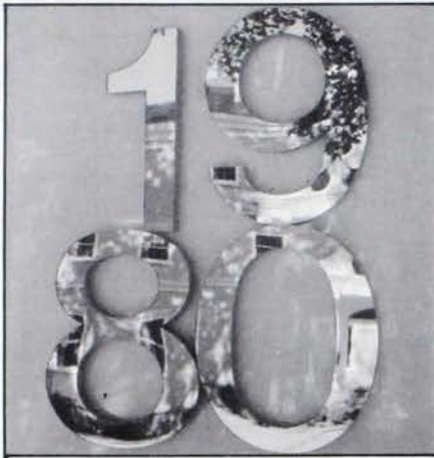
OF PI KAPPA ALPHA

SEPTEMBER, 1980



FAST START ON THE EIGHTIES





### 18a Fast Start on the 1980's

Cover photo by Larry Kuzniewski depicts double entendre of the 1979-80 annual report, which begins on page 18a (an insert in all subscribers' copies and a souvenir 1980 New Orleans Convention program), and the beginning of a challenging new decade.



### 6 All-Time, All-Pike Football Squad, 1928-1980 by Dillon Graham

Commemorating the fiftieth anniversary of Brother Graham's involvement in the selection of annual all-Pike football teams, he has named the all-time best.



### 14 Beauty and the Business by R. John Kaegi

The Tour of Pi Kappa Alpha's Memorial Headquarters in Memphis.

# S&D

VOL. 91 NO. 1 SEPT. 1980 USPS 780-500

## MASTHEAD

### Published by

The Pi Kappa Alpha Fraternity  
577 University Blvd.  
Memphis, Tennessee 38112  
(901) 278-7464

### Richard L. Murgatroyd

Executive Director

### Editorial Staff

R. John Kaegi  
Editor

### Renee P. Risk

Copy Editor

Charlie Barnes, Ed Pease, Richard Pfordner, Jerry Reel & Tom Wright  
Contributing Editors

Bill Gregg, Frank Morris & Bob Shettlesworth  
Illustrators

### Advertising

Contact editorial office

### Supreme Council

Virgil R. McBroom  
President

Charles W. Francis, Jr.  
Vice President Chapter Affairs

Gary Menchhofer  
Vice President Financial Affairs

Charles Wallace  
Vice President Alumni Affairs

Tom Wilkinson  
Vice President Leadership

Tommy Turner  
Legal Counsel



### 28 Yellowstone Interpreter

When deer turn into elk and other Yellowstone phenomena.

### 3 Forum letters to the editor

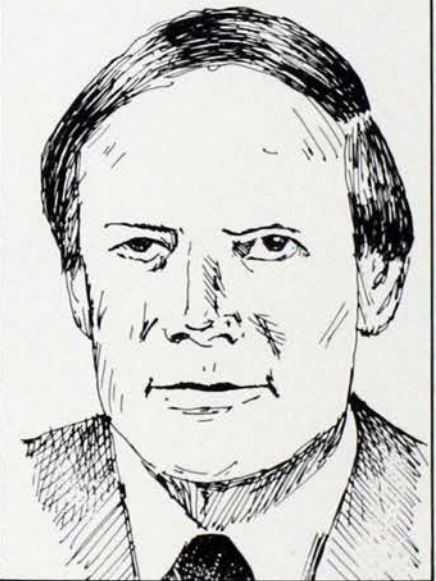
### 4 Update news

### 9 Chapter Notes

### 12 Leaders by Andy Doyle

### 19 Gifts

### 28 Alumni including personalities, pro-file, books and notes.



### 33 Pro-File: John Layton

SHIELD & DIAMOND is an educational journal published by the Pi Kappa Alpha Fraternity, 577 University Blvd., Memphis, TN 38112, quarterly, in September, December, March and June. Send correspondence to same address. Manuscripts are invited, but the publisher will not assume responsibility for return of unsolicited material. Changes of address should be reported promptly giving full name, chapter, old and new address. Undergraduates' copies are mailed to their parents' address until address change notification after graduation. Lifetime subscription must be renewed by request eight years after initiation year. Copyright 1980 by Pi Kappa Alpha Fraternity. All rights reserved. Second Class postage paid at Memphis, TN. POSTMASTER: Send change of address on Form 3579 to Shield & Diamond, 577 University Blvd., Memphis, TN 38112.



## DELTA KAPPA CARES

I WOULD like to take this opportunity to commend your San Diego State chapter, Steve Clark, President, for their interest in helping the children of their community.

Many organizations give lip service to helping, but few will take any action. The San Diego State Pi Kappa Alpha chapter is a group that takes action.

The chapter at San Diego State put on a party for about thirty boys. They gave them a tour of the College, we played games and they even provided transportation and food. Each of the children was paired with a "Big Brother." This was significant as many of the boys are fatherless.

The positive exposure that your Fraternity provided these children will, I am sure, encourage many of them to seek higher education.

Again, we would like to applaud Pi Kappa Alpha as a Fraternity that cares and puts its care into action.

Michael S. Slater  
Program Director  
Boys' Club

## TRIMMINGS TRIMMED

I WAS pleased to see in your March issue a picture of the Pike house at Mississippi State in its traditional Christmas splendor. However, in the caption under the picture it implied that this is the first time since the house burned in 1962 that the Christmas Open House was held for the faculty at Mississippi State. As a member of the Fraternity from 1966 to 1970 at Mississippi State, I was pleased to be associated with Christmas Open House and the decorations therefor during my entire tenure. As a matter of fact, I was chairman of the event in my capacity as social chairman for the chapter during the Christmas season of 1969.

It is true that the open house activities ceased during the 70's because of exams being scheduled before Christmas holidays during those years, but to indicate that this past year was the first year since 1962 that Christmas Open House had been held was an error.

This reminder is not meant as criticism, but to properly inform you that the Christmas Open House and the elaborate decorations associated with it continue to be a tradition at Mississippi State with the rebuilding

# FORUM

of the House in 1963. I continue to look forward to receiving your excellent publication.

Fraternally,  
Richard R. Ellington  
Gamma Theta, '67  
(Mississippi State)

## DREAM UNFULFILLED

I AM a charter member of Eta Epsilon chapter and a 1957 graduate of the University of Houston. On September 13, 1977, I was blessed with the birth of my first and only son, Andrew Basye Seward III. Although my work has not allowed me to be particularly active in postgraduate Fraternity affairs, one of my fondest hopes for Andy III was that he pledge and be initiated as a Pi Kappa Alpha upon his matriculation.

I must tell you that my beloved son will never enter the bonds of phi phi k except in my heart and through your good offices. Andy III died on August 1, 1980, when his little heart and body did not have the strength and endurance to allow him to recover from a drowning accident at our home.

Andy III will be buried with my pin over his heart, and I beg that if you can find a way, either through the laws of the Fraternity or as a special or exceptional case, to enter my son into the rolls of the Fraternity.

I fully realize that when Andy reached the age of decision, his choice could have been entirely different from the direction I would have counseled and guided. While it may have never been significant in the future had Andy lived, by granting my request, you would do me great honor and service and help me to express a small part (really a great part) of the love I feel for my little Andy.

Thank you from the depth of my heart.

Fraternally,  
Andy Seward, '55  
Epsilon Eta (Houston)

*Editor's Note: This letter was written to the Supreme Council just prior to its meeting at the 1980 New Orleans*

*Convention where they will make every effort to find a way to grant Brother Seward's request. A postscript to the story involves the pin with which Andy was buried. Brother Seward could not locate his own Pi Kappa Alpha pin. He contacted a chapter brother to ask him to donate a pin for the burial. However, the brother did not have a pin, but said he knew someone from Alpha Lambda (Georgetown) who had a pin and might be willing to donate it. Although he had never met Andy Seward, Brother Steve Knuettel, Alpha Lambda, sent his pin to the Swards to be buried with little Andy on Monday, August 4.*

## AN ACTIVE

HERE IS a short poem that may be relevant to local alumni associations. It reflects the desire to have many active, participating members in any association and I believe that it would be worthwhile printing for the numerous IKA alumni chapters throughout the nation.

Are you an active member  
The kind that would be missed  
Or are you just contented  
That your name is on the list?  
Do you attend the meetings  
And mingle with the crowd  
Or do you come to listen  
Then crab both long and loud?  
Do you take an active part  
To help the association along?  
Or are you satisfied to be  
The kind to "just belong?"  
Do you ever give suggestions  
When the association looks kinda sick  
Or leave that up to just a few  
Then talk about the "clique?"  
And when the program's scheduled  
That means success, if done  
Do you put your shoulder to the wheel,  
And work with everyone?  
So attend the meetings regularly  
And help with hand and heart  
Don't be just a member  
But take an active part.  
Think this over, member,  
Are we right or wrong?  
Are you an active member —  
Or do you just belong?

By being involved with your local alumni association, you will have the opportunity to participate with many Pike brothers encompassing many years and perhaps from several chapters in shaping the local association and sharing in its progress. The personal rewards, the satisfaction that results is like that you received as an active, involved undergraduate member of IKA.

Fraternally,  
Jim Nelson  
Beta Nu, '78  
(Oregon State)



# UPDATE

## In 70's, Pikes Raise \$900,000 For Charity

AN ESTIMATED \$900,000 to \$1 million was raised by Pi Kappa Alpha chapters for philanthropy during the seventies a recent study found.

Total reported by about half of the chapters during the previous decade amounted to \$905,000. Much more went unreported it is believed.

On top of that, Pikes contributed approximately 137,000 man-hours to service projects, 22,000 in the last year alone as more chapters took on one-to-one projects. Most of those activities involved Pi Kappa Alpha's national philanthropy, Big Brothers/Big Sisters of America and its affiliates.

Over the past two years, Pikes have

reported raising over \$220,000 for causes ranging from St. Jude Children's Research Hospital to college and university fund drives. The biggest beneficiary of Pike-raised money was the Muscular Dystrophy Association which reaped about \$540,000 from Pike projects in the last decade.

The most money raised in one year was \$160,000 in 1973-74 when chapters took part in the national Pike Bike Race which accounted for \$150,000 of that total.

## Hazing Cases Reap Penalties

THREE CHAPTERS determined to have abused the Fraternity's anti-hazing policy were severely disciplined by the Supreme Council recently.

Alpha Epsilon (North Carolina) was placed on one-year probation which means the chapter's charter could be revoked if further hazing takes place. In addition, the chapter was fined \$1,000, to be reimbursed if the chapter sends at least ten members to the 1980 New Orleans Convention. The chapter was also required to send fifteen members to the regional conference and report every sixty days on their programs and progress to their regional president. They must also establish a three-man alumni advisory board.

Eta Omicron (Northeast Louisiana) was also placed on one year probation. Other punishment included establishing an alumni advisory board, regular progress reports and fine and attendance requirements as named above.

The third chapter, Delta Beta (Bowling Green State), also received similar punishments except the chapter received a \$300 fine to be repaid if attendance requirements are met.

## Expansion to Include Colo.

THE UNIVERSITY of Colorado and Mesa College in Grand Junction, Colorado are among the sites approved for expansion during the coming year by the Supreme Council.

The University of Colorado move would recharter Beta Upsilon chapter while the other would be a new effort. Colorado was once a Western stronghold with five active chapters, all of which are silent today.

Other expansion sites okayed include Rose-Hulman Institute in Terre Haute, Indiana, Southern Illinois University of Carbondale and Illinois State University at Bloomington-Normal.

## Bequest Adds \$15,000 to Books

WHEN CEPHAS Brainerd IV died, he left a continuing will that, upon the death of his wife Rose recently, bequeathed \$15,764.79 to the Pi Kappa Alpha Memorial Foundation. Brother Brainerd was initiated in 1912 at Alpha Upsilon (New York).

Two generous gifts were also received by the Memorial Foundation from women recently.

One, from Ms. C. P. Stegemann,

was donated in memory of her late husband, Brother C. P. Stegemann, Beta Phi (Purdue).

Ms. Mamie Entriakin contributed five hundred dollars to the Foundation which closely follows another significant gift she made in 1978. Although she has no direct tie to the Fraternity, Ms. Entriakin believes in helping young people and sees the Memorial Foundation's educational purposes as worthy of her support.

## Alum Directory Okayed For '81

RESPONDING TO demand, Pi Kappa Alpha will publish a new, broader alumni directory in 1981.

The Bernard C. Harris Publishing Company of White Plains, New York, producer of the popular 1977 edition, was again selected to produce the mammoth directory. The oldest and largest exclusive publisher of alumni directories in the world, Harris has completed more than three hundred alumni directories for colleges and fraternities over the past seventeen years.

"We expect alumni will find the directory a valuable reference and it will be helpful in planning alumni activities and programs," said Executive Director Dick Murgatroyd. He added, "This extensive project is undertaken at virtually no cost to the Fraternity."

The Harris Company has contracted to compile, produce and market the directory, financing the operation solely through the sale of individual directory copies and, where appropriate, through advertising space reservations for alumni only. Though Harris had been following the same strategy in producing collegiate alumni directories for years, it was just 1976 when the company first agreed to publish Pi Kappa Alpha's alumni directory under the same arrangement. Pi Kappa Alpha was the first national fraternity to publish an alumni directory under the Harris system.

The Fraternity will not benefit financially from the directory sales, though it will derive substantial benefit from the completely updated records and new information obtained.



## Four Consultants Join Professional Staff

FOUR RECENT graduates joined three veterans on the Pi Kappa Alpha chapter consultant corps in June.

Andy Doyle, Eta Alpha (Clemson), Dave Heckel, Beta Phi (Purdue), Tom Mullender III, Beta Gamma (Kansas) and Stewart Oliver, Alpha Phi (Iowa State), are the newcomers to the staff. The chapter consultants travel nine months of the year to the chapters within their respective regions around the country. The visits, which last from three to seven days each depending upon the chapter situation, are to help the

chapters improve in all areas of operation.

They will be joining three who traveled extensively last year: Vic Balasi, Beta Eta (Illinois), who will

relations officer, special events chairman and social chairman. He also won his chapter's award presented to the brother who demonstrates the highest qualities of



Doyle



Heckel



Mullender



Oliver

### Directory...

"Purchases of the directory should not be considered as a contribution to Pi Kappa Alpha," Murgatroyd emphasized. "This is an alumni service that would be too expensive for Pi Kappa Alpha to undertake without the Harris Company, but it is a service that alumni rightfully demand of us."

#### Alumni Directory Sample Entry

**ANDERSON, D. Mark; BA,** Wofford College; Dir. of Chapter Services, Pi Kappa Alpha Fraternity, 577 University Blvd., Memphis, TN 38112, 901 278-7464; r. 1255 Applebrook, No. 8, Memphis, TN 38134, 901 386-6922.

The main body of the directory will consist of an alphabetical listing of all alumni with each entry to include name, class, chapter, home address and telephone and business or professional information including title, firm name, address and telephone. Two complete indexes of all alumni, one arranged geographically by towns within states, and the other by chapter, will follow the main listings, providing ready references.

The updated material will be derived from brief questionnaires mailed to all alumni with known addresses and followed up by telephone for verification of the information to be printed in the directory. At that time, and at that time only, alumni will be invited to purchase a copy of the directory or reserve space. Only enough directories to fill these pre-publication orders will be printed, and circulation will be restricted to alumni.

Release of the directory has been tentatively scheduled for late summer, 1981.

be a special consultant visiting certain chapters for extended periods, John Judge, Alpha Phi (Iowa State), who will travel the Midwest, and Tim Groves, Beta Phi (Purdue), who will travel the West.

Doyle will travel the deep South. He will bring a wealth of fraternity experience to the job including positions at his often recognized chapter as vice president, rush chairman and assistant pledge coordinator. Doyle was also active on campus serving in the Tiger Brotherhood, the EMT Club, Student Union Outdoor Recreation Committee and Campus Crusade for Christ.

Traveling the Carolinas, Kentucky and Tennessee will be Brother Heckel who served Beta Phi as president, vice president, public

brotherhood.

Tom Mullender, who is listed in the National Register of Outstanding College Graduates, will travel the Southwest. He has extensive student government experience combined with the following positions at Beta Gamma: SC, Executive Council member, Judicial Council member, parliamentarian and assistant rush and social chairman.

Stew Oliver will travel the Northeast. He brings to the job experience as chairman of special projects, intramurals and social affairs at one of the Fraternity's traditionally strongest chapters. He also served on the Campus Chest Control Committee, Student Union Board, Varieties Central Committee, Pep Council executive vice president and school mascot.

## PI KAPPA ALPHA

# Briefly...

FOUNDED March 1, 1868, University of Virginia. In its 113th year.

MEMBERSHIP totals nearly 115,000 initiated brothers.

174 ACTIVE chapters and two colonies in 40 states.

INVESTED nearly \$3.5 million in chapter houses. Chapter House Fund net worth of \$2 million to assist chapters.

SCHOLARSHIP and loan fund worth \$442,000. Leadership development fund worth \$1.1 million. General operating budget of nearly \$900,000.

MAGNIFICENT Memorial Headquarters in Memphis, Tennessee houses a museum, library, meeting rooms and executive offices featuring sophisticated equipment and systems.

EXECUTIVE staff includes 13 directors and chapter consultants and nine supportive staff people working full time to help chapters and members.

PROMINENT alumni have held practically every important office in government and business and famous alumni star in athletics and entertainment.

PROVIDES the most important benefit of all — brotherhood. Everywhere a Pike goes, he will find a brother.



# WESLEY FESLER

AND 40 MORE PIKE ALL-TIME GREATS □ BY DILLON GRAHAM

IT'S THE simplest thing in the world to start to select an All-Time All-PiKA Football Team.

You just write down two words: Wesley Fesler.

That's the way I began my *Shield & Diamond* story about the first All-Time IKA Football Team selection thirty-one years ago in 1949. No use to change. It's the same lead today. Fesler, the only Pike ever selected on major media all-American teams in each of his three varsity years as an Ohio State University player in 1928-29-30.

The Editor of *Shield & Diamond* has asked me to look back over the fifty-year stretch of Fraternity teams since I first became involved in 1930 and choose another all-time all-Pi Kappa Alpha team.

I had to select a nineteen-man first team so as to include all our players who were legitimate all-Americans. Second and third teams also were chosen.

Selections were made on the basis of a player's college record, although the later professional performances of some of our brothers were given consideration.

The sure choices were easy — players named on annual all-American teams selected by the Associated Press, United Press International and the Coaches team, as well as those in the years of International News Service, *Look* and *Collier's* magazines and the teams of Walter Camp and his successor, Grantland Rice.

There was Fesler and close behind him Frankie Sinkwich, the Georgia Fireball of 1941-42, who was named to the AP team both of those years.

Here are the others named to the all-time team:

At end with Fesler are Tom Scott, Virginia, 1951-52, and Don Montgomery, North Carolina State, 1963. (The years shown for players are the years they were chosen on the annual Fraternity teams.)

The tackles are Jack Johnson, Utah, 1930-32, Tommy Neville, Mississippi State, 1963, and Sam Ball, Kentucky, 1965.



Wesley Fesler, Ohio State





*Bob Suffridge, Tennessee*



*Glenn Dobbs, Tulsa*

Tennessee furnishes two of the guards, Bob Suffridge, 1939-40, and John Michels, 1952. The other is Guy Dennis, Florida, 1968.

The centers are Gomer Jones, Ohio State, 1934-35, and Walter Gilbert, Auburn, 1936.

Joining Sinkwich in the backfield

are Glenn Dobbs, Tulsa, 1940-4142, George Cafego, Tennessee, 1939, Jake Gibbs, Mississippi, 1959-60, Lance Alworth, Arkansas, 1959-60-61, Duane Purvis, Purdue, 1932-33-34, Alex Hawkins, South Carolina, 1956-57-58, and Rodger Bird, Kentucky, 1965.

Seven of these players have been voted into the College Football Hall of Fame. They are Fesler, Sinkwich, Cafego, Jones, Gilbert, Scott and Suffridge.

Grantland Rice, perhaps the top sports writer of his era, wrote in 1930:

"In many ways, Fesler was the most remarkable player of the year. He was a star defensive end and also a star backing up the line. He ran the team, called signals, did most of the passing and punting. When he finally assumed full running charge of the team, Ohio State with only fair material won five straight games. There was no other star who could do as much and do it so well."

Another Midwestern sports writer commented:

"He stands out above all Big Ten stars. He was more than a player; he was a team."

Coach Sam Williamson rated Fesler the greatest athlete ever to attend Ohio State.

Besides starring in football, basketball and baseball, Fesler was a Phi Beta Kappa and a leading figure in campus political, social and other activities. *The Lantern*, college paper, said:

"Unassuming modesty is a characteristic of Fesler which

## WHO PICKED 'EM

BROTHER LAWRENCE E. Rose of Arizona started it — the practice of selecting an All-IICA football team every year. He chose a 1927 team for *Shield & Diamond*.

The next year Les Goates of the University of Utah named a team. As sports editor of the *Deseret News* in Salt Lake City, he had such connections that he could obtain reports on Pikes throughout the country. Goates also selected the 1929 team.

Dillon Graham, then AP southern sports editor in Atlanta, from the University of Florida, came into the picture with Walter F. Coxe of Georgia Tech to choose the 1930 team. Brother Graham has selected or helped to select every team in the half century that followed.

Coxe named the 1931 team, assisted by Goates, Charles F. Dufour of Tulane, Roy Hunter of Duke, William M. Stearns of University of New Hampshire, Orren Pickard of Southwestern University, Albert Peery of Washington and Lee, Earl Johnson of Milwaukee and Graham.

Coxe continued to select the team every year through 1937. Goates, Dufour and Graham worked closely with him.

The demands of his business kept Coxe so busy that at his request Graham took over in 1938 and has handled the job ever since, aided by Harvey T. Newell, Goates, Harry Heath, Coxe and others.



deserves hearty appreciation and consideration. Fesler in body will leave his old stomping grounds in June, but his spirit will live on as long as football is played here and sportsmanship is a characteristic of the American people."

Fesler coached football at Harvard, Wesleyan University and Princeton before becoming head football coach at Pittsburgh. Then he returned to Ohio State as head football coach for several years, winning the Big Ten championship in 1949 and beating California in the Rose Bowl. After a short business career, he returned to football as head coach at Minnesota. Then another business post for quite a few years until his retirement in 1972 to Laguna Hills, California, where he reports he and his wife, Myra, are having a wonderful time.

In 1942, Sinkwich was virtually a unanimous all-American pick, and the flat-footed Georgian also was awarded the Heisman Trophy as the country's outstanding college football player. No other Pike has ever won this honor. Sinkwich also was chosen on the AP 1941 All-American team.

He became in 1942 the first player in modern history to exceed the two thousand yard mark in total offense, with 2,187 yards. He either scored or passed for touchdowns in every game, got five yards a try carrying the ball, called signals and averaged thirty-six yards punting.

Dobbs was chosen on the AP All-American team in 1942. He led college passers with the highest percentage of completions and also was perhaps the nation's best punter.

Gibbs was virtually a consensus all-American in 1960 when he was quarterback of an unbeaten Ole Miss team which beat Rice in the Sugar Bowl. Alworth was an all-American in 1961 and later was chosen several times as flanker back on the American Football League all-star for his play for the San Diego Chargers.

George (Bad News) Cafego of Tennessee was the ace of a club which went unbeaten in 1939 and whipped Oklahoma in the Orange Bowl.

Duane Purvis, Purdue's great back in 1932-33-34, was selected on Grantland Rice's *Look* magazine team in 1933. Rodger Bird of Kentucky won a backfield spot on *Time* magazine's 1965 team.

Breaking down the Pike all-time all-America's by decades, fourteen of the forty-three players chosen played during the 1928-38 period; eight played between 1938 and 1947; twelve between 1958 and 1967; and

three between 1968 and 1980.

By sections, five players were from the East, four from the Midwest, twenty-three from the South, seven from the West and four from the Southwest. Tennessee led with five selections; Kentucky had three.

Four are chosen as the Fraternity's all-time top coaches: Lynn (Pappy) Waldorf of Syracuse who coached Northwestern and California, Rip Engle who coached Penn State, Glenn Dobbs who tutored at Tulsa, and Fesler.



*Pappy Waldorf sends troops to battle.*

## ALL-TIME ALL-PIKE FOOTBALL SQUAD 1927-1980

### FIRST TEAM

End: Wesley Fesler, 1928-29-30, Ohio State  
 End: Tom Scott, 1951-52, Virginia  
 End: Don Montgomery, 1963, North Carolina State  
 Tackle: Jack Johnson, 1930-32, Utah  
 Tackle: Tommy Neville, 1963-64, Mississippi State  
 Tackle: Sam Ball, 1965, Kentucky  
 Guard: Bob Suffridge, 1939-40, Tennessee  
 Guard: John Michels, 1952, Tennessee  
 Guard: Guy Dennis, 1968, Florida  
 Center: Gomer Jones, 1934-35, Ohio State  
 Center: Walter Gilbert, 1936, Auburn  
 Back: Frank Sinkwich, 1941-42, Georgia  
 Back: Glenn Dobbs, 1940-41-42, Tulsa  
 Back: Jake Gibbs, 1959-60, Mississippi  
 Back: Lance Alworth, 1959-60-61, Arkansas  
 Back: George Cafego, 1939, Tennessee  
 Back: Duane Purvis, 1932-33-34, Purdue  
 Back: Alex Hawkins, 1956-57-58, South Carolina  
 Back: Rodger Bird, 1965, Kentucky

### SECOND TEAM

End: Joe Whitesides, 1934-35, Utah State  
 End: Scott Warren, 1977-78-79, Florida State  
 Tackle: Whaley Hall, 1963, Mississippi  
 Tackle: Bo Russell, 1937-38, Auburn  
 Guard: Richard Weber, 1941-42, Syracuse  
 Guard: Mario Pacetti, 1932-33-34, Wisconsin  
 Center: Marvin Jonas, 1928-29-30, Utah  
 Back: Bill Anderson, 1956-57, Tennessee  
 Back: Jack Lee, 1958-59, Cincinnati  
 Back: Jimmy Nelson, 1939-40-41, Alabama  
 Back: Carl Brumbaugh, 1929, Florida

### THIRD TEAM

End: Henry Sparks, 1936, California  
 End: Pete Smith, 1936-37, Oklahoma  
 Tackle: Cal Shawley, 1928-29-30, Penn State  
 Tackle: Ed Rutsch, 1956-57-58, George Washington  
 Guard: Vincent Sarratore, 1949, Chattanooga  
 Guard: Larry Vagnali, 1961, Pittsburgh  
 Center: Mike Lucci, 1961, Tennessee  
 Back: Mike Mikulak, 1931-32-33, Oregon  
 Back: Larry Seiple, 1965-66, Kentucky  
 Back: Ronny Johnson, 1974-75-76, North Carolina  
 Back: Billy Gambrell, 1962, South Carolina



# NOTES

## Keeping Up With Benji

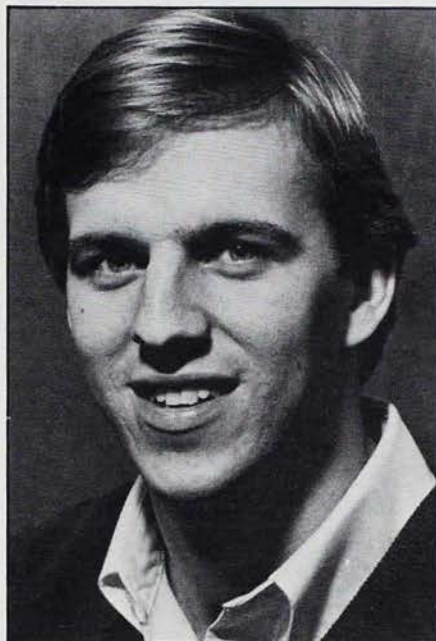
HE DOESN'T appear to be in a hurry. However, it's almost impossible to keep up with all the academic progress and campus activities of Alpha Kappa chapter's Benji Winter.

Benji is the son of Mr. and Mrs. Robert V. Wolf. (Brother Wolf, a former national officer, is Alpha Kappa's chapter advisor.) In the fall of 1977, Benji entered the University of Missouri-Rolla as a freshman. He is a senior majoring in metallurgical engineering and has a perfect 4.0 grade average.

But, 1977 was when Benji started to move.

It wasn't surprising that he chose to major in metallurgical engineering. He had often worked with his stepfather, who is professor of metallurgical engineering at UMR, on some of his creative metal work. "I enjoy metals processing and casting," Benji explains, "and the work in the foundry. I think metallurgical engineering will give me a good technical background, but from there I plan to get into management. After I receive my engineering degree, I think I'll work toward a master of business administration degree."

When he enrolled at UMR, Benji pledged Pi Kappa Alpha fraternity, moved into the house and quickly became involved in campus and departmental activities. He was elected to Phi Eta Sigma freshman honorary and served as that organization's vice president. He was secretary of the student chapter of the American Foundry Society, and a pledge in Alpha Sigma Mu, metallurgical engineering honorary. He joined Tau Beta Pi engineering scholastic honorary, the Fine Arts Committee of the Student Union Board and became a disc jockey and newscaster for KMNR, the student radio station. At Alpha Kappa he was secretary, served on several



*Benji Winter*

committees and was a member of IKA's intramural teams.

Benji was the recipient of a number of four-year scholarships including University of Missouri Curator's Scholarship, the Lewis T. Sicka (departmental) Scholarship, Aid Association for Lutherans Scholarship and the National Merit Scholarship sponsored by the American Society of Metals. Last fall he received another, the Chester V. Nass Scholarship awarded by the Foundry Education Foundation.

It is hard to keep up with Benji. He will receive his degree in May, 1981, after only three and a half years at tough UMR, probably with a perfect gpa. Benji Winter is a young man in a hurry.

## Beta Pi Erects Wall of Fame

SEVENTY-FIVE ALUMNI joined eighty undergraduates for the induction of the first four members of Beta Pi (Pennsylvania) chapter's Wall of Fame on Founders' Day.

The chapter room west wall now honors four of Beta Pi's many outstanding alumni: Past National President John F. E. Hippel,

Dehaven Develin, John E. Pomfret and David F. Maxwell.

Brother Maxwell, like Brother Hippel, a distinguished attorney, received the Fraternity's Distinguished Achievement Award in 1957 and was president of the American Bar Association. Brother Develin is a trustee of the Fraternity's Endowment Fund and was chairman of the Bryn Mawr Trust. Brother Pomfret was the president of William and Mary College.

Each of the honored played important roles in the growth of Beta Pi chapter which has an uncommon number of important alumni.

Dr. Burton Brodo of the prestigious Wharton School of Business and Finance gave the keynote address.

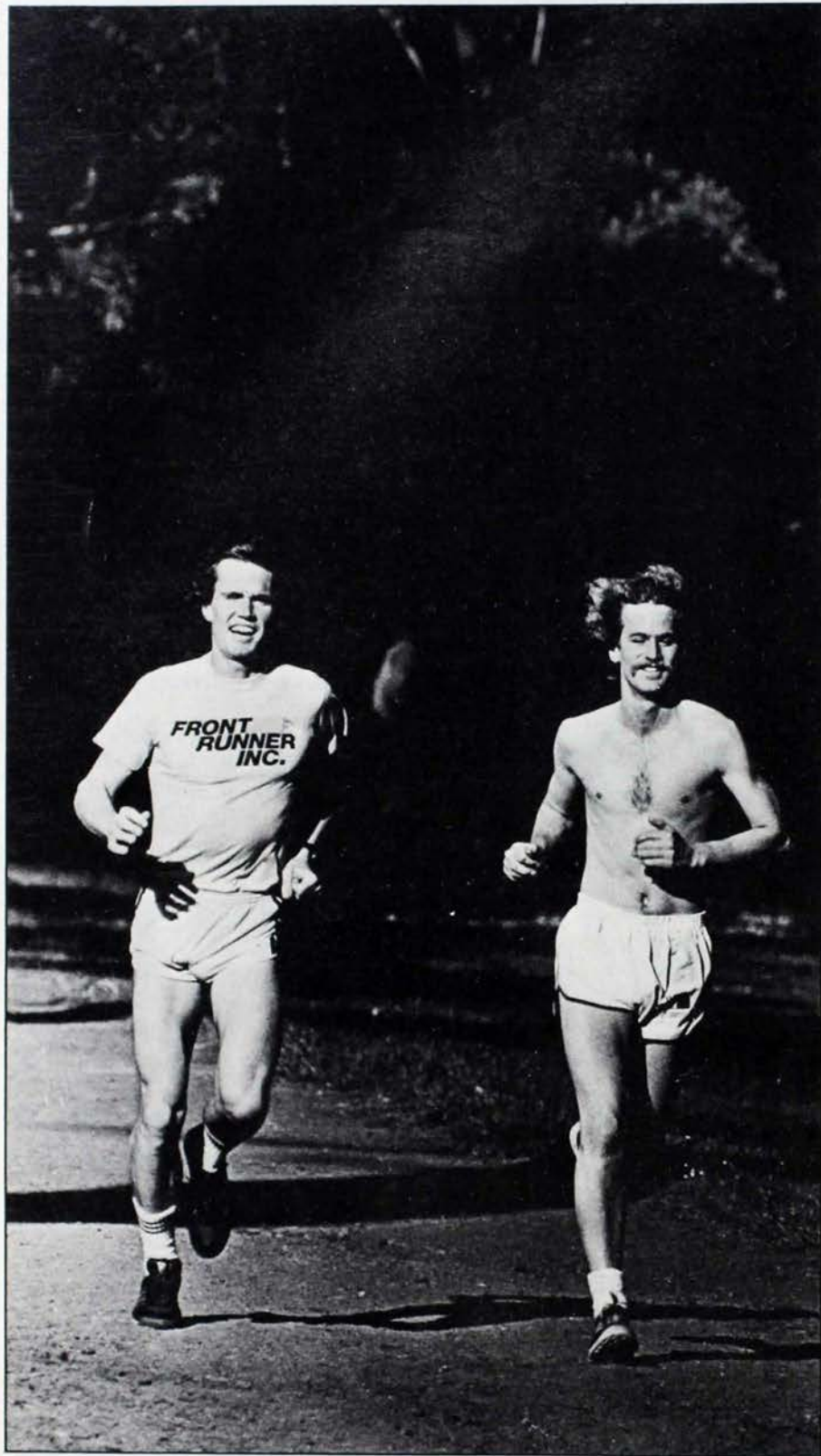
Beta Pi showed its alumni that it intends to retain its momentum by initiating twenty pledges the next day. The chapter also recently raised over \$2,000 in a charity basketball game for the Leukemia Society of



*John Hippel and Dehaven Develin and the Wall of Fame.*

America, and capped the 1979-80 year by accepting, again, the Crawford C. Madeira Cup, presented annually to the fraternity at Penn making the outstanding contribution to the university community.





## Pacesetter

WORLD CHAMPION cross country runner Craig Virgin, above left, a 1980 USA Olympic team qualifier, helped Alpha Kappa chapter (Missouri-Rolla) raise \$1,000 for an all-weather community track recently. Virgin paced a field of 320 runners in a five-kilometer fun run co-sponsored by the Pikes and the Rolla Area Kiwanis Club. The American Record Holder in the 10-K finished first, as expected, in a time of 15:22, 1:27 better than the second finisher. More than 150 trophies in various age categories were presented with the hosts winning the participation award with 24 runners.

## Court of Honor

ZETA PI (South Florida) saw a need and filled it, and ended up with the sponsorship of the spring semester homecoming crowning of the King and Queen of USF. Alpha Delta Pi sorority assisted the Pikes as they submitted a detailed proposal for the Homecoming King and Queen Coronation to the school administration. The event helped the Pikes rally to win the best Greek organization spirit award for the homecoming week as well.



## Credit Due

LET'S GIVE credit where it's due — to Alpha Omicron, the chapter that perennially comes up with a winner at Southwestern University in Texas. For the umpteenth year in a row, Alpha Omicron has captured the intramural sports trophy winning football, tennis and pool and finishing high in all other sports. But perhaps even more amazing is their scholastic record. Alpha Omicron was awarded the scholarship trophy for the *twenty-ninth* time in the last thirty semesters. (The administration has become so accustomed to awarding it to the Pikes, that they did it last semester even before the final cumulative grade points were in!) Pikes also control the campus with locks on the Student Senate presidency, editors of three campus publications and domination among residence hall staff.





## In the Study

THE MEN of Gamma Nu (Iowa) are into studying, just as they are into winning just about everything else on campus. Last semester they studied their way to the highest combined gpa ever achieved at UI among initiated members of a fraternity: 2.98. The chapter placed second in members and pledges combined category. They are living proof that grades and involvement are not mutually exclusive as the chapter continues to dominate the Iowa campus in fund raising, campus involvement and pledge class quality.

## Sacred Cow?

THEY SAY there are no sacred cows at "Moo U" (Purdue), but judging from the Beta Phi chapter sponsored Miss Purdue contest, plenty of Purdue's females would put to shame those at other schools. Ten years after Purdue dropped its competition, Chapter Advisor Chris Law saw an opportunity for the Pikes to do something big. That something big was the Miss Purdue scholarship of \$250 and qualification for the Miss Indiana Pageant. A standing room only crowd enjoyed the spring crowning of Miss Denise Wilson. Next year, the scholarship and the auditorium will expand.



## Trophetic

EPSILON CHAPTER (VPI) may have to build a new trophy case to hold all the 1979-80 school year awards it won. Virginia Tech President Dr. William Lavery, left, poses with his son, former SMC Mike Lavery, right (with SMC Ron Evans in the center), holding first place trophies for participation and fund raising at Tech's annual dance marathon for MDA. Epsilon also won, for the second year in a row, the coveted Leadership Trophy and the Greek Bike Race for Juvenile Diabetes fund raising competition. The chapter capped the year by winning the intramural softball crown.



## God Bless(ed) Our Chapter

AN APOSTOLIC blessing was bestowed upon Theta Kappa chapter (Indiana Southeast) by none other than Pope John Paul II recently. Alumnus Dave Coons, a student at St. Meinrad School of Theology, presented the token of his recent trip to Rome. An Apostolic Blessing is a document that affirms God's bestowal of his favor upon the fraternity for its good works. It was given to the chapter by the Pope, through Brother Coons, and is extended to the families of the chapter members.



# LEADERS

YOUR CHAPTER'S destiny lies in rush, right? Wrong. It is more dependent upon what your chapter does with all those fine pledges once you sell them on joining Pike.

The months immediately following rush are crucial to each pledge's future role in Pi Kappa Alpha. They will determine his happiness quotient, so to speak, which will, in turn, determine his value to your chapter. There is no surer way to waste a member's potential than to educate him poorly about the organization he's just joined for life. Multiply that idiom by the number of pledges and you can see the impact one bad pledge program can have on the future — the destiny — of your chapter.

A well-informed pledge enters the membership ranks ready to assume the responsibilities and the benefits of brotherhood. How do you know if your program is turning out men really ready for the challenge of membership? The easiest way is to

## Planning Your Chapter's Destiny

by Andy Doyle

define the purpose and goals of your program.

Is your current program's sole purpose the preparation of new members for involvement and leadership in the chapter? It should be. And the goals of your pledge program, which reflect this purpose, should cultivate close fellowship

*Andy Doyle, Eta Alpha (Clemson), is a chapter consultant.*

between pledges and initiated members, teach the history and traditions, how the local and national operate and the ideals of Pi Kappa Alpha.

Step two. Determine the most successful way to achieve these goals. Positive motivation produces the best results and ensures an atmosphere conducive to learning. (Negative motivation provokes negative reactions which is exactly why chapters that haze their pledges always — repeat, always — decline in stature.)

Tailor your program to fit your chapter's unique situation and needs. That requires innovation and variation in your approach to orienting pledges.

The best way to maintain a pledge's motivation for the duration is to provide him with a written outline specifying exactly what must be accomplished in order to be initiated. It should include individual requirements as well as pledge class requirements. This program should appear challenging, but not to the extent that it is burdensome or hazardous to life and learning.

Two kinds of group activities should be included: a constructive chapter improvement project and a community service project. Infinite ideas are available for either kind, from building a barbecue deck for the house to sponsoring a social event





for the chapter. Community service may include charity fund-raisers, blood drives or visiting shut-ins.

Pledges should also be expected to help with regular chapter projects such as the homecoming sign or float construction, house repair and upkeep and alumni affairs. Pledges

exam about Fraternity knowledge a requirement for initiation. It should consist only of questions about facts and ideals relevant to membership. No useless trivia belongs on the quiz. For those pledges who fail, require an oral presentation to the chapter or pledge class on that material covered

brother in the chapter. It should be his big brother's duty to help him in his transition from pledge to member. The older member should listen and help whenever he is needed. Some of the closest friendships fraternity can promote often come from big and little brother relationships.

Disciplinary problems can be handled by the big brother as well, and, if they persist, by a Pledge Advisory Board. The board should comprise the SMC, pledge coordinator, chapter advisor and big brother coordinator. Situations serious enough for the board to handle should be thoroughly discussed. If any discipline is warranted, it should be constructive and designed to help the pledge and the chapter.

The need for a well-planned pledge orientation program cannot be over-emphasized. And, it cannot be the job of one man. Rather, a Pledge Programming Committee including different members in charge of separate areas divides the workload and stimulates creative planning. Members of the committee should oversee the big brother program, instruction, projects and scholarship. The committee should keep the chapter aware that every member is responsible for proper pledge orientation.

Well-rounded men should emerge from every fraternity at graduation. The pledge period, though only a portion of the collegiate period, is the critical, stage-setting beginning. Make the most of it for each member's "mutual benefit and advancement."

## **"It's an old fashioned, but effective incentive to make passing a written exam a requirement for initiation."**

working alongside members instill closer feelings of brotherhood rather than simply building "pledge class unity," an oft-heard, but useless goal.

Exposure to alumni through Founders' Day activities and alumni association meetings, or a dinner guest speaker, develop the attitude that IKA is a lifetime association. Commitment to and enjoyment of Pi Kappa Alpha does not end at graduation. It gives them a better look at the "big picture."

History, traditions, national and chapter operations should be taught through weekly pledge meetings using existing resources: *The Garnet & Gold Pledge Guide* and *The Oak: A History of Pi Kappa Alpha*, the new history book.

It's an old-fashioned, but effective, incentive to make passing a written

by the quiz. It is more positive than punishment, less likely to cause depledgings, and gives them valuable public speaking experience.

A pledge retreat in the first few weeks of the program is a perfect opportunity for the pledges to become acquainted and to plan their projects. It is also a good time to discuss questions such as what they want from fraternity, why they pledged Pike and what their personal goals are as members. Such talks stimulate thinking about the deeper meaning of fraternity and provide them with time to evaluate you as well. At the same time, the discussion will help them answer such questions in the future when rushees ask them "what is fraternity and why should I join?"

Every pledge should have a big

## **Pledge Program Checklist**

### **Upon Pledging**

- ☐ formal pledging ceremony (Ritual)
- ☐ evaluate rush
- ☐ orientation meeting (pass out materials)

### **First Month**

- ☐ pledge class retreat
- ☐ assign big brother
- ☐ elect pledge class officers
- ☐ assign to chapter committees
- ☐ orientation to chapter and national operations
- ☐ begin participation routine

### **Before Initiation**

- ☐ study national and chapter history
- ☐ learn traditions
- ☐ community service project
- ☐ house improvement project
- ☐ weekly meetings covering *Garnet & Gold*, *The Oak*
- ☐ written and oral quizzes
- ☐ big brother progress evaluation





# BEAUTY AND THE BUSINESS

IF YOU HAVEN'T EXPLORED THE STATELY  
YET FUNCTIONAL MEMORIAL  
HEADQUARTERS, WE PRESENT.

ART, ARTIFACTS and artisans have co-existed for a quarter of a century on University Boulevard in Memphis, Tennessee, and they're not part of an art school. Rather, fraternity registry is the business of this building, the Memorial Headquarters of Pi Kappa Alpha.

Within the stately Georgia Colonial edifice is a collection of fine art and impressive carpentry, of momentos and documents that are priceless to our noble order, of artists who daily carve their mark on the heritage of Pi Kappa Alpha Fraternity.

Although thousands of pledges have taken The Tour, and many a vacationing Pike has soaked in the Headquarters' atmosphere, many more have not. So here it is, your Pi Kappa Alpha national office, built by the Memorial Foundation in 1953-54

in memory of servicemen who died for our country (the Gold Star Chapter).

Situated on a picturesque corner adjacent to Overton Park (where Interstate 40 suffers its only interruption from Washington, D.C. to Barstow, Calif.), the Headquarters basks in a classic campus surrounding. Directly across University stands the magnificent campus of Southwestern at Memphis, the nice folks who donated the land upon which the Headquarters was constructed. Southwestern's entire campus is built from Georgia stone, raised in Old English Tudor architecture complete with slate rock roofing and pigeons. Special permission was granted Pi Kappa Alpha to break that tradition and build the

Headquarters from red brick to match the towering Evergreen Presbyterian Church next door.

Passing through the gothic white arches into the building, one first notices the dedication plaque placed there by the Grand Old Man, Robert Adger Smythe himself, September 5, 1954. Those who were there remember Powell B. McHaney, chairman of the building committee, say the Headquarters "is a symbol of something man cannot recreate in bricks and mortar." Rather, it is like hallowed ground as it enshrines the names of all those killed in action in all wars since the Spanish-American War. A bronze tablet with the names of all Gold Star members through the Korean War and scrapbooks containing information about all since then, are on display inside.





*Grandfather clock, handmade in 1815, rich walnut paneling and gold-speckled marble floors, greet incoming visitors, left. Below left, Garnet & Gold Board Room. Below right: Harvey T. Newell Memorial Library.*

## THE TOUR



As one enters the foyer, the classic walnut paneling, irreplaceable today, and the gold-speckled, marble floor intimate that this is a quality-built and maintained structure. Oriental rugs cover the foyer and the natural wood flooring of the adjacent library.

At the library entrance is a grandfather clock, hand-made in 1815 and passed down through a family of which a member became a Pike and later donated it to the Fraternity. It is the source of many of the ghost stories that accompany the Tour. As the story goes, an executive in the late sixties desired to fix the clock, which runs on a pulley system, so that it would work properly. He called in a clocksmith who said he would have to tool some new parts and install them the following

Monday. When Monday arrived, the executive arrived early and was pleasantly surprised when the old clock chimed eight times at 8:00. It hadn't chimed in decades. Just a few minutes later the clocksmith showed up with the new parts, to the amazement of the staff who thought the parts had already been installed. The clock has never worked since.

Other ghost stories one may hear on The Tour include the time a janitor found Robert Adger Smythe's wicker rocking chair in full motion — without a visible occupant; the time another janitor felt something behind him as he descended the staircase, and, upon turning, had a conversation with Smythe's ghost; the time a staff member who was previewing a new slide show kept seeing Smythe's image on the screen

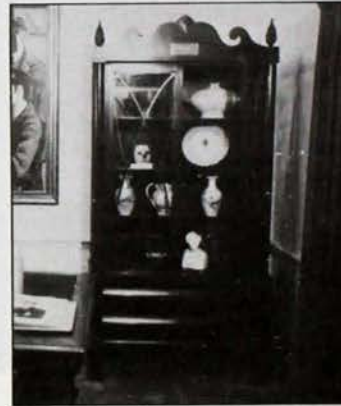
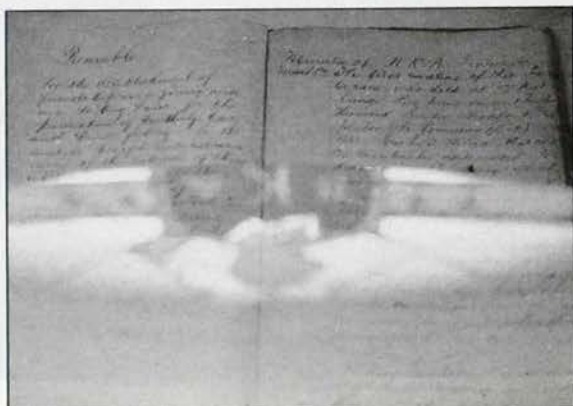
instead of the image on the slide; and the time another staffer, who had just turned out all the lights and left the premises late one evening, returned to retrieve a forgotten item, and found all the lights on. We won't mention the many cases of funny business, missing or moved items and other strange occurrences that seem to confirm the theory that the Headquarters is haunted with the ghosts of the Founders and Junior Founders.

On to the Harvey T. Newell Library, named for the national president who should have presided over the building's dedication if he hadn't been tragically killed in an airplane accident in Texas. In one corner a case displays Brother Newell's valued IIKA effects including the ring and pin recovered





*Freeman Hart Museum, left, includes original minutes and Preamble scribed by Founders. Below, left to right: stained glass coat-of-arms reflected in Preamble case; unique mug in William Alexander collection; antique Alexander bookcase and memorabilia.*



at the site of the crash by a loyal alumnus. Books written by or about members, reference materials including every issue of *Shield & Diamond*, in bound volumes, and college handbooks are among the books on the shelves.

Through the double sliding doors, one then enters the Junior Founders Room, also floored in natural wood accented with an Oriental rug, and with portraits of each Junior Founder on the wall. It is sometimes used as an office or conference room.

From there, the tour proceeds to the bustling work area housing three directors (alumni, chapter services and chapter development), the word processing center and membership records. One notes the modern equipment including sophisticated IBM magnetic card, memory

typewriters and microfiche reading equipment.

A stroll down Founders Hall follows. Each Founder's portrait, painted by famous artist Paul Penczner, is elegantly framed and hangs in Founders Hall. Another series of work areas follow, including the executive director's office, attractively appointed in wall cloth and deep earth tones in the furniture, and the director of housing office. Also in that area are the offices of bookkeepers and assistants.

The large, back office area is devoted to communications. Here, the *Shield & Diamond* and all other printed materials are created. One marvels at the phototypesetting equipment and other modern machinery that ultimately saves thousands of dollars over jobbing out

this work.

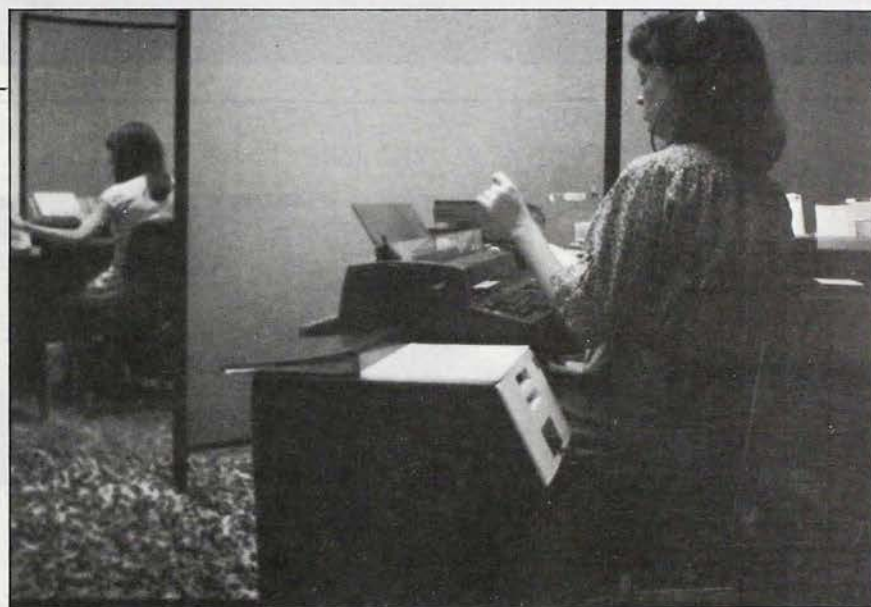
Now on to the really good stuff, upstairs. As one slowly winds his way up the garnet-colored carpet stairway, he cannot help but feel impressed by the workmanship of the bannister, the chandelier and the indirect-lighted paneling.

On the second floor, to the right, is the General Meeting Room with its giant, wooden U.S. map with a lighted bulb for each chapter ever founded. The room is used for Presidents Conferences and other medium-sized meetings. In back of it is the Audio-Visual Room where the latest videotape and sound equipment aid in the manufacturing of films and slide shows used by chapters and alumni.

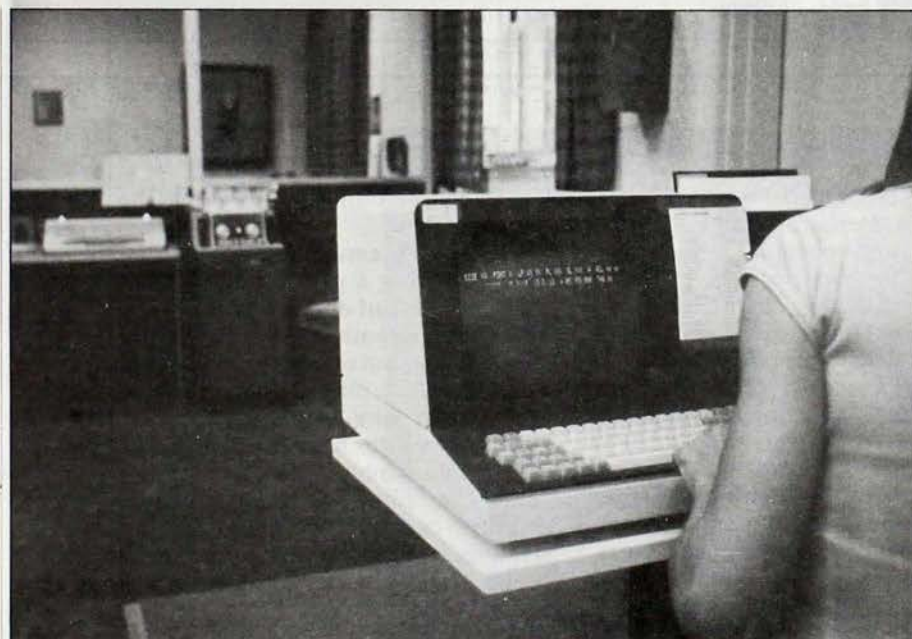
Another impressive corner of the second floor is the Garnet & Gold



*Marble (actually  
terrazzo) floor in  
hallway compliments  
classic paneling and  
indirect lighting.  
Portraits of all six  
Founders hang in  
Founders Hall.*



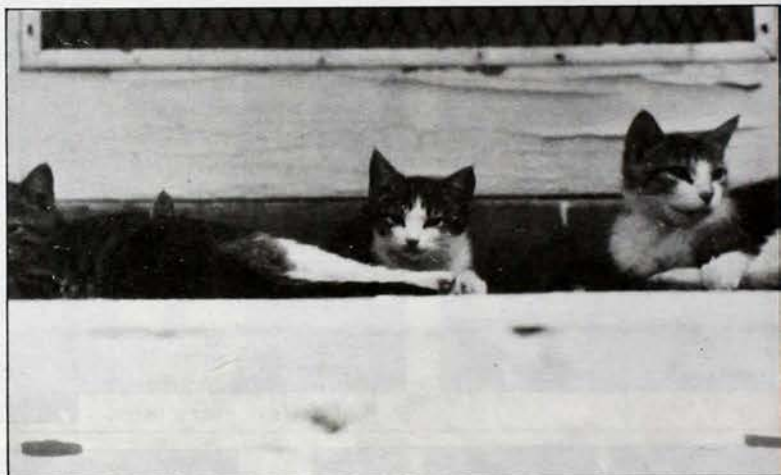
*Contrasting the  
antique beauty are  
smooth-lined modern  
machines. At right,  
secretaries use IBM  
magnetic card  
memory typewriters.  
Below, all type is set  
on AM Varsityper  
composition  
equipment. Such  
technology saves the  
Fraternity thousands  
of dollars every year.*







*Giant, wooden map features lighted bulbs for every chapter ever chartered in the General Meeting Room at left. Much of the printed materials are produced in house on offset press, below left. Below, though ghosts abound at the Headquarters they don't scare the only visible tenants of the building.*



Board Room, the richly appointed, plush meeting area used by the Supreme Council, various commissions and the staff. The room sports a marble fireplace and deep pile garnet carpet.

Cases of uniforms worn by Pikes in most of the country's wars fought since the Civil War dominate the hallway which leads to offices of the chapter consultants and the printing/mailling office.

The Freeman H. Hart Museum is the outstanding attraction upstairs. In it are displayed the original minutes and Preamble as penned by the Founders March 1, 1868, and a

wide variety of historically significant memorabilia: Founders' furniture and personal effects, all antiques, original copies of hand scribed rituals, minutes and registers, photos of prominent Pikes and early dream girls, collections of early pins and convention photographs. A large painting depicting the founding, but inaccurately including all six Founders, one of whom is drawing the current coat-of-arms (which wasn't designed until much later), graces one wall. All of this at the foot of a beautiful stained-glass rendition of the coat-of-arms facing to the east

(front of the building) to catch the morning sun.

The Tour is concluded without the visitor getting a glimpse of some of the mustier, but curious areas in the attic and basement. Many items of vague value, but of interest to the real IKA stalwart, may be found in those dark and spooky locations.

Yet, the visitor has reaped his fill of Pi Kappa Alpha's heritage by the time The Tour has finished. It is usually capped by photo taking sessions and a signature in the guest book to prove posterity that "I was there."



# GIFTS

THE PI KAPPA ALPHA MEMORIAL FOUNDATION WAS ESTABLISHED IN 1948 TO BUILD AND MAINTAIN THE BEAUTIFUL MEMORIAL HEADQUARTERS BUILDING IN MEMPHIS, TENNESSEE, AND TO RAISE TAX DEDUCTIBLE FUNDS TO BE USED AS AN ENDOWMENT FOR EDUCATIONAL LOANS, GRANTS AND SCHOLARSHIPS TO WORTHY STUDENTS. IN 1979-80, THE MEMORIAL FOUNDATION RAISED OVER \$10,000 FROM LOYAL ALUMNI CONTRIBUTORS WHO ARE LISTED BELOW BY CHAPTER. INTEREST AND INVESTMENTS RAISED THE TOTAL AMOUNT OF INCOME TO OVER \$61,000. DURING THE SCHOOL YEAR, THE MEMORIAL FOUNDATION REDISTRIBUTED NEARLY \$19,000 IN LOW-INTEREST LOANS AND ANOTHER \$5,000 IN SCHOLARSHIPS AND GRANTS. THE FOUNDATION IS ALSO PUTTING ASIDE MONEY TO BUILD A LONG-AWAITED ADDITION TO THE MEMORIAL HEADQUARTERS. ALL GIFTS TO THE MEMORIAL FOUNDATION ARE TAX DEDUCTIBLE AND ANYONE WHO GIVES \$25.00 OR MORE IS A VOTING MEMBER OF THE FOUNDATION.

BETA  
DAVIDSON COL  
W. BOYCE-57  
GAMMA  
WILLIAM & MARY  
C. RAINES-73  
DELTA  
BRNHAM SOUTHERN COL  
B. GLASGOW-25  
J. SPANN-45  
ZETA  
TENNESSEE UNIV OF  
G. HEMMICH-64  
E. MCGOWAN-56  
ETA  
TULANE UNIV  
W. ANDREWS JR-75  
W. BRANTLEY JR-56  
P. BRONSTEIN-74  
P. DALACOS-72  
J. GUBEN-74  
K. KILLIAN-79  
C. RADFORD-73  
R. REES-72  
P. VANDERHEYDEN-73  
G. WEBB JR-70  
THETA  
SOUTHWESTERN-MEMPHIS  
J. OTT-76  
IOTA  
HAMPOEN-SYDNEY COL  
A. SANDERS-32  
KAPPA  
TRANSYLVANIA UNIV  
J. ROBINSON-36  
SIGMA  
VANDERBILT UNIV  
A. HILL-25  
E. KELLY JR-64  
TAU  
NORTH CAROLINA UNIV  
E. GLOVER-25  
UPSILON  
AUBURN UNIV  
J. CONE JR-26  
J. DOWELL-32  
ALPHA DELTA  
GEORGIA INST OF TECH  
W. ATTEBERRY-18  
ALPHA ZETA  
ARKANSAS UNIV OF  
H. CRUCE-21  
ALPHA ETA  
FLORIDA UNIV OF  
T. FEASTER-31  
J. LAYTON-51  
B. MUNRO-46  
J. SUBERS-78  
ALPHA IOTA  
MILLSAPS COL  
C. MARRY-35  
V. ROBY-35  
ALPHA KAPPA  
MISSOURI UNIV-ROLLA  
W. HALLERBERG-59  
H. KIRKPATRICK-27  
R. KREUTZER-43  
J. LATZER-57  
J. SCRIVNER-50  
ALPHA MU  
UNIV OF GEORGIA  
H. FRIEDMAN-48  
ALPHA XI  
CINCINNATI UNIV OF  
W. NESTER JR-47  
ALPHA NU  
MISSOURI UNIV OF-COL

G. GLADDING-10  
W. NICHOLS-25  
R. ROGERS-58  
D. SHEPHERD-66  
G. SMITH-48  
ALPHA OMICRON  
SOUTHWESTERN UNIV  
G. ELKINS-17  
W. LOWRY SR-27  
ALPHA RHO  
OHIO ST UNIV  
G. GIESER-62  
A. VANGUNDY-38  
ALPHA SIGMA  
CALIFORNIA UNIV OF  
R. BIGELOW-51  
G. JACUZZI-41  
ALPHA TAU  
UTAH UNIV OF  
F. BRADSHAW-24  
S. CORNWALL-23  
W. GARDNER-14  
ALPHA PHI  
IOWA ST UNIV  
G. COTTINGTON-55  
B. MOAD-13  
ALPHA CHI  
SYRACUSE UNIV  
W. BEYEN-49  
F. GYNN-15  
M. WHITNEY-17  
ALPHA OMEGA  
KANSAS ST UNIV  
D. COOK-77  
T. EMERSON-35  
J. GULLEDGE-19  
C. LUDMAN-26  
K. SILVERWOOD-27  
BETA ALPHA  
PENN ST UNIV  
H. EATON-45  
H. HILLER JR-29  
BETA BETA  
WASHINGTON UNIV OF  
D. DOWNING-38  
BETA GAMMA  
KANSAS UNIV OF  
W. CHALFANT-47  
H. HERNDON-27

C. KENNEDY-42  
BETA DELTA  
NEW MEXICO UNIV OF  
W. KELLY-45  
R. LOKEN-29  
BETA ZETA  
SOUTHERN METHODIST  
E. BALLOU JR-50  
L. HENSON-30  
W. PEARCE-33  
BETA ETA  
ILLINOIS UNIV OF  
K. BATES-44  
L. WATT-30  
BETA THETA  
CORNELL UNIV  
E. AVERILL-24  
T. HELFRICH-62  
BETA MU  
TEXAS UNIV OF  
E. JONES-48  
BETA PI  
PENNSYLVANIA UNIV OF  
D. DEVELIN-21  
R. KAEHLIN-49  
H. MACKLER-72  
D. MAXWELL-20  
R. SUSSMAN-69  
BETA SIGMA  
CARNEGIE-MELLON UNIV  
H. LEHNE-33  
BETA TAU  
MICHIGAN UNIV OF  
F. CRON-24  
W. DIXON-23  
R. WYKES JR-23  
BETA PHI  
PURDUE UNIV  
P. GEISER-42  
E. NEUFER-54  
C. STEGEMANN-67  
J. WORK-26  
BETA CHI  
MINNESOTA UNIV OF  
R. HOOD-29  
H. KLIPPEN-27  
GAMMA ALPHA  
ALABAMA UNIV OF

J. HORNE-33  
R. OGLE-61  
GAMMA BETA  
NEBRASKA UNIV OF  
C. FARRAR-24  
J. PAVELKA JR-34  
GAMMA GAMMA  
DENVER UNIV OF  
E. ARCHULETA-39  
GAMMA DELTA  
ARIZONA UNIV OF  
D. DUNIPACE-58  
V. MILLER MD-66  
GAMMA ETA  
U.S.C.  
B. NORTON JR-42  
A. TERNQUIST-26  
GAMMA THETA  
MISSISSIPPI ST UNIV  
D. COOPER-27  
F. WYLIE JR-34  
GAMMA KAPPA  
MONTANA ST UNIV  
A. BALZER-56  
R. DULL-28  
R. STOKAN-30  
GAMMA MU  
NEW HAMPSHIRE UNIV  
L. JOHNSON-59  
GAMMA OMICRON  
OHIO UNIV  
J. ORPHAN-36  
GAMMA SIGMA  
PITTSBURGH UNIV OF  
W. HOEL-58  
L. MOREAU-51  
GAMMA TAU  
RENSSELAER POLY INST  
W. MATSUNAYE JR-35  
GAMMA UPSILON  
TULSA UNIV OF  
R. CHAPMAN-37  
DELTA ALPHA  
GEO WASHINGTON UNIV  
A. HALL-47

DELTA BETA  
BOWLING GREEN ST  
M. CLANCY JR-58  
DELTA GAMMA  
MIAMI UNIV  
R. FANNING-55  
DELTA EPSILON  
TENNESSEE UNIV OF  
D. WOFFORD JR-47  
DELTA ZETA  
MEMPHIS ST UNIV  
B. WILLIAMS-52  
DELTA THETA  
ARKANSAS ST UNIV  
R. FAMIGLIETTI-63  
DELTA KAPPA  
CALIF ST-SAN DIEGO  
G. ROACH JR-57  
DELTA XI  
INDIANA UNIV  
J. LISHER-71  
DELTA SIGMA  
BRADLEY UNIV  
G. GEE-51  
DELTA TAU  
ARIZONA ST UNIV  
P. ILER-70  
DELTA CHI  
NEBRASKA U OF-OMAHA  
P. HALLORAN III-62  
EPSILON MU  
GEORGIA ST UNIV  
D. CARTER-76  
EPSILON PI  
SAM HOUSTON ST UNIV  
W. WILSON JR-68  
EPSILON PSI  
WESTERN MICHIGAN  
A. NASH JR-68  
ZETA OMEGA  
SW LOUISIANA UNIV OF  
M. MILEY-69

## MEMORIAL FOUNDATION INCOME AND AWARDS

Year	Income from Alumni Gifts	Income from Investments	Total Income	Total Loans & Scholarships
1979-80	\$27,363	\$18,183	\$61,364	\$23,440
1978-79	29,335	(1,995)	42,659	18,615
1977-78	18,044	8,628	39,491	25,465
1976-77	18,312	8,616	39,747	24,810
1975-76	12,381	8,763	33,899	29,338
1974-75	28,025	9,371	50,151	31,682
1973-74	16,946	7,261	36,046	17,675
1972-73	59,485	3,798	70,461	14,480
1971-72	23,005	7,943	37,658	23,050
1970-71	18,721	4,746	27,259	31,933



# GIFTS

THE PI KAPPA ALPHA LOYALTY FUND ADDED MORE THAN \$100,000 TO THE FRATERNITY'S GENERAL FUND BUDGET FOR THE FIRST TIME EVER IN 1979-80. A TOTAL OF MORE THAN \$121,000 WAS GIVEN TO THE FRATERNITY BY OVER 5,000 LOYAL ALUMNI AND FRIENDS OF PI KAPPA ALPHA. THE MONEY IS AN IMPORTANT PART OF PI KAPPA ALPHA'S ANNUAL OPERATING INCOME MAKING UP 13.6 PERCENT OF TOTAL 1979-80 INCOME AND HELPING TO FIGHT RISING COSTS TO JOIN THE FRATERNITY. THE LOYALTY FUND MAKES POSSIBLE PROGRAMS SUCH AS ALUMNI AFFAIRS, CONFERENCE AND CONVENTION EXPENSE FUNDING AND CONSULTANT VISITATION AND PAYS A LARGE SHARE OF THE COST OF PUBLISHING THE SHIELD & DIAMOND MAGAZINE. ANYONE MAY GIVE AS MUCH AND AS OFTEN AS HE DESIRES TO THE LOYALTY FUND. 1979-80 CONTRIBUTORS ARE LISTED BY CHAPTER, BELOW.

## ALPHA VIRGINIA UNIV OF

F. BASSETT JR-25  
C. BEDELL-21  
J. CHAFFIN JR-63  
H. CRAWFORD-28  
R. CROWDER-48  
C. DAVIS III-65  
S. EVANS-30  
M. EVERHART-66  
C. FARISS-59  
J. FERGUSON-33  
W. GULLIFORD-39  
H. HANNAH III-57  
F. HESTER-26  
E. HIRSCH-51  
G. HOBBS JR-49  
J. HUDSON JR-41  
R. HUFF-47  
G. JEUTTER-48  
P. KEITH JR-30  
G. KNAPPENBERGER-48  
B. LAWSON-72  
W. LEADBEATER-30  
W. LINEWEAVER-67  
E. LOWMAN-43  
R. MASSIE-64  
J. MCGUIRE-39  
J. MCNEIL-63  
P. MEADERS JR-50  
B. MORREL-60  
P. PETER-51  
T. SCHNEIDER-68  
G. SWAN-37  
J. TRINKLE-47  
C. WALSH III-39  
J. YON-32

## BETA DAVIDSON COL

C. AKERS-31  
J. AKERS-27  
G. APPERSON-18  
H. ARBUCKLE JR-25  
J. BAKER JR-73  
B. BAKER-7  
C. BOYKIN-21  
W. CUMMING-48  
R. ENSIGN-46  
E. E. SCOTT-71  
J. HARPER JR-51  
H. HARRIS JR-29  
A. HILLHOUSE-21  
M. HORNE-76  
T. JONES-24  
K. KIRK-76  
G. LEWIS-55  
H. MARTIN-25  
J. MARTIN-63  
W. MC DANIEL JR-60  
J. MCNAIR III-44  
J. MCNEILL-61  
J. MITCHELL III-73  
MOON III-73  
M. MORRISON-74  
C. NEWBOLD-49  
L. PARKER III-52  
R. PARKS-38  
W. PERDUE-38  
W. PRICE-61  
W. REGEN-26  
L. SCOTT-62  
L. SLANE JR-30  
S. SMITH-76  
R. WALTHER JR-54  
J. WHITE-24  
J. WINE-39

## GAMMA WILLIAM & MARY

W. ANDREWS-22  
R. BOATRIGT-68  
B. BRADLEY-20  
T. BURKE-49  
W. COAKLEY-60  
W. COLE-48  
D. DENBY-61  
R. DUDLEY-36  
R. FERENCZI-49  
M. GWINNER-60  
W. HEATWOLE-62  
C. HUNT-70  
F. JENKINS-15  
J. JOHNSON-73  
E. LAND JR-36  
W. MORTON-36  
C. RAINES-33  
C. RAWLS-24  
R. RUFFERT-38  
W. SCHULTZ-54  
V. SEXTON JR-22  
S. SMITH JR-66  
B. STEIB-64  
C. TRUSLER-35  
C. TUTSCHKE-60  
E. WAYLAND JR-47  
B. WHITEHEAD-47  
K. WILLIAMS-63  
J. WILLIS JR-33

## DELTA BRNHAM SOUTHERN COL

J. BLAIR-43  
B. CALDERBANK-46  
B. GLASGOW-25  
J. HAYGOOD JR-34  
T. HINTON-16  
J. LOVELESS JR-48  
S. LUCAS JR-30  
R. MCLENDON-56  
G. MILLER-20  
C. ROGERS JR-36  
J. SPANN-45  
J. STEELE-37  
L. TERRY MD-28

## EPSILON VIRGINIA POLY INST

J. AYERS JR-72  
D. BROOKS-74  
W. BROOKS III-72  
F. CHANEY-76  
W. CLARK JR-73  
M. COATES-71  
C. GILBERT-76  
J. KASH-71  
T. LAMONICA-71  
J. ROBERTSON-71  
E. RODES JR-72  
C. SHEFFIELD-71  
F. TEMPLE-71  
T. TILLAR-73  
T. TILLAR JR-71  
O. TOLBERT-71  
G. TORGENSEN-72  
E. WRIGHT-72

## ZETA TENNESSEE UNIV OF

S. BARNES JR-40  
P. BARNHART-43  
E. BLACKBURN-27  
W. BLACKWOOD-41  
D. BOONE-20  
T. BRAGO-47  
J. BROOME III-55  
J. BROWN JR-66  
D. CHANCE-37  
H. CLINE JR-74  
T. COOK-72  
T. CRAWFELL-32  
J. DESVAUX-71  
R. EARNHARDT JR-52  
F. FARLEY-72  
L. GREENE-66  
A. HAGER III-77  
E. HALLIBURTON-25  
W. HARRISON JR-61  
C. HARTY-42  
W. HAWKINS-46  
H. HAYES JR-44  
A. HEINS III-73  
G. HEMMICH-64  
J. HIGGS-43  
H. HINDS-51  
J. HOFF-59  
C. HOOPER-71  
A. JEFFREY-66  
A. JONES-74  
W. KILLIAN-68  
F. KUHLMAN JR-69  
T. LAWSON JR-62  
L. LONG-48  
T. MAGETTE-76  
L. MAROON-67  
S. MARS III-70  
M. MARTIN-72  
G. MCCALLISTER-73  
H. MCDOUGALL-71  
H. MILLER JR-34  
A. MOTT-40  
L. MUSE-74  
W. ONEIL-22  
R. PEARSON-72  
J. PETER-43  
R. PRINCE-61  
J. PUCKETT-47  
G. ROBINSON-32  
C. SHELTON PHD-67  
C. SHY-37  
F. SMITH-54  
R. SNIDER-74  
W. STEWART-54  
C. VOID-74  
T. WADE JR-53  
J. WANER-61  
S. WASSON JR-22  
W. WELLS-24  
G. WIBLE-25  
C. WILLIAMS-51  
J. WILLIAMS JR-18  
W. WINCHEL-51  
H. WOOD JR-77  
T. WOOLFE-72  
W. ZACHARY JR-46

## ETA TULANE UNIV

H. AARDWEG JR-48

C. AUCCIN JR-62  
J. BARNES-39  
W. BRIDGES-31  
J. CIARAVELLA JR-62  
A. COLLETT JR-53  
W. CONE MD-55  
W. DAVIS-49  
F. EBL-43  
W. FANT-48  
W. FORET-66  
A. FRISTOE-36  
R. GALLEGLY JR-29  
E. GARLAND-60  
T. HARRAH-45  
H. HATCHETT JR-58  
M. HEINE-73  
P. IMPASTATO-48  
R. KIMBALL JR-41  
L. LEMANN-60  
D. LEWIS-73  
J. MAECHLING-50  
P. MALLON-67  
G. MCCASKEY JR-40  
M. MCKEY-71  
A. MOORE-29  
J. OCHSNER-61  
J. RICH JR-57  
E. ROBERTSON-68  
J. ROBERTS-40  
L. SAPERA-61  
M. SCHARRE-72  
A. SMITH JR-38  
G. SMITH-74  
P. SMITH-74  
P. UNKEL-53  
P. VANDERHEYDEN-73  
R. VANDERMEULEN-45  
W. WATKINS-42  
R. WILKINSON-74  
G. WIMBISH-47

## THETA SOUTHWESTERN-MEMPHIS

C. ANDERSON-22  
H. BAER-51  
C. BAKER-46  
B. BOGY JR-32  
R. BROWN-37  
J. CUNNINGHAM-55  
E. EDMUNDS-73  
E. HARRIS-29  
D. JOLLY JR-42  
P. KAHN JR-65  
J. LUK-53  
M. MATHESON-30  
G. MYRICK-23  
J. OTT-76  
H. POWELL JR-66  
R. RUSSELL-28  
D. STEINMEYER-68  
N. STEVENS JR-31  
C. STULTZ-26  
H. THOMPSON JR-47  
L. TRINNET-26  
H. TURLEY-27  
M. WALKER-19  
E. WEBB JR-40

## IOTA HAMPTON-SYDNEY COL

G. BEAM-43  
C. BLACKLEY-29  
R. BLANKINSHIP MD-21  
L. BLANTON-67  
G. BROOKS JR-48  
W. COOK-19  
R. DIOM JR-47  
R. FRANCIS JR-40  
W. GRUBB JR-54  
W. HARBURG JR MD-34  
W. HUBBARD-35  
J. HUNT-27  
C. HUTTER-38  
D. JOHNSON-64  
C. KINER-23  
L. LEVIN-75  
J. LIPCOMB JR-64  
H. LONGERAN JR-46  
W. LUCADO-48  
M. MIKER-58  
C. PACE-52  
P. POCANE JR-26  
E. POOLE-31  
W. REVELLY-36  
M. SCHEUMANN III-72  
J. SLOAN-22  
J. SMYTH-26  
W. TRACY-39  
J. TRINKLE-47

## KAPPA TRANSYLVANIA UNIV

R. BLACK-58  
E. CHRISTAIN-46  
T. CONKEY-31  
D. COX MD-19  
E. CURTICE JR-27  
C. EDMONDS-28  
W. EMERY-65  
D. FALKENSTEIN-27

C. FORTUNE-19  
J. GENTRY-30  
T. GRUMBLES-71  
W. HANKINSON-49  
A. HOOVER-25  
R. JOHNSTON-35  
D. JONES-24  
F. KASDAN-73  
R. MARCUS-62  
J. MARTIN-18  
J. MAYES-72  
B. MEECE-48  
J. ROBINSON-36  
H. ROWLAND-42  
H. SCHICK-62  
C. SCRANTON JR-60  
G. SHELTON-30  
C. TAYLOR-29  
B. THOMAS-11  
B. WARD-53  
T. WATSON JR-58  
A. WHEATLEY-05

## MU PRESBYTERIAN COL

C. BREARLEY JR-41  
J. BULLWINKEL-34  
N. CHARLES-54  
A. GUERARD-36  
J. HAFLEY-36  
W. HAGOOD-57  
J. HENDERSON JR-60  
J. HUGHES JR-60  
J. KNOX MD-55  
J. LORR-53  
R. LYNN-31  
B. MATHEWS-56  
G. MCKINNEY-74  
J. MCRAE-77  
P. MOYE-75  
C. MURRAY-77  
J. SHELBOURNE-57  
S. SLOAN-56  
W. SOMERVILLE JR-39  
R. STOVALL-57  
R. STRICKLAND-76  
W. TODD-36  
H. WALKER-27  
W. WATSON III-70  
H. WILSON-21  
W. WISE JR-38  
W. WISE JR-55  
J. WOODWARD-57

## NU WOFFORD COL

V. BELEOS-58  
L. BRADFORD MD-58  
L. BUFF JR-55  
M. HEMMING-65  
C. CROSLAND-55  
H. FLOYD-67  
C. GARRETT JR-58  
W. HENLEY-65  
N. HOLEN JR-64  
M. PERROW JR-74  
C. SHEPARD-64  
J. STREATER-56

## XI SOUTH CAROLINA UNIV

E. BURKE III-65  
T. CLARK-75  
T. CONATY-67  
J. DEVANEY-56  
E. HARRILL-54  
L. HEGLER-66  
J. HUSER-58  
W. HUMPHRETT JR-31  
P. MAUER-61  
E. MICHEL-44  
B. NICHOLSON-65  
D. ODOM-57  
J. POTTER-58  
W. ROGERS-50  
W. SHEELY JR-56  
J. STEPHEN-43  
J. THURMOND-59  
W. WALKER-33  
J. WELLS-28  
C. WILLIAMSON JR-50  
J. WILSON-60

## OMICRON RICHMOND UNIV OF

J. ATKINSON-74  
W. BOWERS JR-64  
J. BOYKIN-35  
L. BYRNE-46  
F. COSBY-36  
C. CUTCHIN-26  
J. DETARNETTE-17  
T. ELDER-76  
A. ELLETT-27  
E. ELLETT-17  
A. FLANNAGAN JR-41  
E. FRANKLIN-27  
J. GABER-14

R. GABER-33  
H. JONES-39  
C. LIPSCOMB-37  
B. LOCKE-48  
R. MANN JR-56  
S. MARCHANT-62  
T. MATCOCHIK-64  
L. MATTHEWS JR-50  
A. MEUNI JR-47  
A. MITCHELL-21  
C. OTTO JR-47  
F. PFANZ-76  
J. POND-47  
H. RICHARDSON-24  
K. TOBIAS JR-64  
J. WILLIAMS-21  
C. WOOST JR-37  
W. WRIGHT-30

## PI WASHINGTON & LEE

W. AMES JR-38  
S. BAILEY-47  
W. BERRY-46  
H. DOBBS-25  
G. EAGLE-51  
P. HUNTER-22  
H. JAMNCKE-28  
R. LEWIS-59  
G. LUPTON JR-54  
K. MACDONALD MD-33  
T. MOORE-30  
G. PARSONS-29  
G. PATTERSON II-57  
A. PEERY-27  
G. SPEER JR-37  
T. TURNER-37  
T. WILSON SR-32

## SIGMA VANDERBILT UNIV

R. ALLEN-61  
E. CHENAU-21  
C. CLARK MD-55  
S. OGDON JR-37  
D. DUFT-40  
E. DUNCAN III-76  
C. ELLINGTON-59  
G. EXNER-67  
D. FISCHER-58  
J. FRAZIER-31  
S. GARLAND-69  
D. JEDDIE-56  
P. GREEN JR-47  
J. GREENE JR-52  
A. HILL-25  
E. HOOVER-55  
H. HORTON-68  
W. HUEY-26  
D. IGNATZ-53  
E. JERNIGAN JR-42  
E. KEELY JR-64  
E. KIRKPATRICK JR-36  
J. KNIGHT-59  
R. LAWRENCE JR-62  
M. MACDOUGALL-72  
G. NELSON JR-33  
R. NELSON JR-69  
W. NUNNELLY JR-62  
T. PAGE-47  
G. PENNINGTON-67  
P. POWERS-47  
J. PRICE JR-51  
C. RANKIN JR-47  
L. REDDEN-70  
J. SIMS-60  
F. SIMS-65  
F. TILLEY-53  
E. WILKINSON-32  
R. WILLIAMS-49  
S. WILKINSON-74  
J. WISE-76  
L. WOLF-51  
J. WRIGHT JR-50

## TAU NORTH CAROLINA UNIV

R. ADAMS-76  
R. BARBER JR-30  
B. BELL-42  
T. BIDDLE JR-76  
H. BRAXTON JR-55  
B. BROWN-49  
J. BROWN-65  
S. CALVERT JR-49  
K. CAMERON JR-66  
L. COOPER-19  
C. COOPER JR-55  
R. COX-71  
P. DALY JR-71  
A. DANIELS JR-44  
F. DELOACH-39  
W. ERWIN JR-53  
J. FAIRCLOTH III-68  
C. FOREHAND III-74  
C. FRENCH-29  
G. HAMRICK-49  
J. HAMRICK-48  
H. JACKSON JR-51



G. KOHLSS-21  
W. LACKY-56  
S. LANCASTER JR-76  
G. LEWIS-44  
J. LOWMAN-29  
J. MILLER-73  
N. MILLER-49  
J. NEWTON-74  
B. PATRICK-20  
F. POLLARD JR-59  
C. POPE III-53  
J. SIMONSON-72  
E. SMITH-63  
S. SNAVELLY-60  
J. SPRINKLE-35  
A. STEELE-33  
R. TAYLOR-25  
J. TEMPLE-61  
A. THOMPSON-32  
R. TURNER-71  
C. VINCENT-54  
A. WATKINS-24  
J. WOLHAR-46  
R. WOODIN III-67  
E. YOUNG JR-55

#### UPSILON AUBURN UNIV

G. BOWLING-13  
M. BRITNELL-72  
B. BROSNAMAM JR-13  
R. BROWN-75  
L. CHESNUT III-40  
J. CONE JR-26  
J. DEVERAUX-42  
R. DEES-37  
D. DYSON-72  
E. ENGLAND-29  
J. FENDLEY II-55  
F. FULTON-27  
W. HAM-31  
J. HARRIS-65  
J. HARTSELLE-26  
J. HOLLINGSWORTH-26  
J. HOLLWAY-75  
J. HOUSE-65  
J. INGRAM-47  
J. JOHNSON-52  
J. KNIGHT-57  
W. LESLIE-28  
S. MORTON-55  
C. NEVINS-48  
M. PANELL-35  
J. PERSONS JR-11-68  
J. PHILLIPS-53  
H. PORTER JR-70  
R. RAY-23  
B. REAMS-64  
W. SESSAMEN-42  
L. SMITH-26  
H. STANLEY-30  
W. SWANN JR-47  
R. SWIFT-49  
R. TAYLOR JR-29  
P. TRIANTOS-75  
J. TUCKER JR-66  
T. TURNER JR-44  
W. WALTHAM-56  
E. WARD JR-56  
S. WHATELY SR-55  
J. WOOD JR-63  
R. WOOD JR-52  
C. ZIRKLEBACH SR-72

#### CHI SOUTH UNIV OF THE

E. WOOD-02

#### PSI NORTH GEORGIA COL

W. ASHER JR-32  
M. BECKMAN-30  
G. CROWDER-28  
J. ELLIS JR-31  
T. JOHNSON-18  
S. MURRIS-14  
D. REED-31  
T. WATERS-29

#### OMEGA KENTUCKY UNIV OF

D. BAULCH-52  
G. BRUMAGEN-53  
R. BROWN-38  
W. COVINGTON-26  
J. CRAIG-48  
J. DAILEY JR-33  
J. DOWNEY-67  
S. DOZIER JR-66  
D. EWING-33  
J. EWING III-59  
B. FERGUSON-48  
S. FLY-73  
J. FOSTER-36  
J. FRANKEL-30  
J. FRIEND-31  
M. GRAYSON JR-60  
H. GROOMS-24  
F. HAAS JR-58  
W. HANLEY-57  
R. HAUN JR-49  
J. HESTER-26  
S. HUBBARD-69  
A. INNES-53  
L. ISON-27  
C. JOHNSON-72  
L. JOHNSON-69  
L. KLOPF-59  
T. LEE-57  
J. LESTOURGEON-32  
W. LUNRY-33  
L. LUZIO-63  
R. MCCARTHY-54  
S. MCELROY-40  
A. MILLER-58  
J. MOORE JR-75  
E. PENN-15  
G. ROBERTS-26  
C. ROWE-62  
E. SAYRE-61  
R. SCHMIDT-70  
G. SILVERS-57  
W. SKINNER-23  
T. SPRAGENS JR-57  
H. SULLIVAN-28  
J. THOMPSON-57  
H. TRAYNOR-32  
A. WAGNER-62  
B. WHITAKER-55  
D. YOUNG-27

#### ALPHA ALPHA DUKE UNIV

J. ASHE JR-58  
G. BEACHAM JR-54  
B. BEST JR-61  
F. BYERS JR-51  
R. ERTLEY-52  
P. EVANS-50  
I. GLASER-75

E. GRIMSLEY-28  
R. HAIRSTON-32  
A. HARRIS JR-25  
N. HARRITT-61  
J. HEDGPET-60  
M. JONES-28  
C. KEFAUVER JR-40  
W. MCCOWN-44  
J. MCGOVERN-40  
F. MCNEER JR-47  
J. MEADOR JR-54  
J. MILLER JR-65  
L. MIRALIA-58  
E. NEMBILL-70  
J. PAGE JR-61  
J. POLLUK-66  
T. SCAHILL JR-45  
W. SCOTT-65  
R. SHAPIRO-75  
R. SHERERTZ-44  
B. SMITH JR-40  
W. SMITH JR-43  
C. TANC-47  
J. WEAVER-43  
C. WRIGHT JR-62

#### ALPHA GAMMA LOUISIANA ST UNIV

M. BECNEL-59  
S. BROHN JR-77  
J. COON-27  
R. COSTE JR-58  
R. CROSBY-50  
J. DALE JR-39  
E. DAVIS JR-68  
J. DEVERAUX-61  
W. DORRUM-73  
F. DOTY-64  
L. EWING-34  
J. FOWLER-75  
R. HAGAN-78  
R. HART IV-66  
A. HOGAN JR-34  
R. LEATHERS-61  
B. LEGENDRE-62  
E. MAIN-44  
L. MCKENZIE-34  
V. MELANCON-61  
M. MIESCH-65  
J. MITCHELL-31  
J. PHELPS-49  
J. PITTMAN JR-18  
L. RICHARDSON-31  
R. ROGERS-40  
R. RORDAM-57  
A. SHOUP-27  
W. SMITH-36  
F. SUTTON JR-61  
R. TOBEY-61  
R. WALKER-43  
W. WOOL-67

#### ALPHA DELTA GEORGIA INST OF TECH

J. BEARDALL III-75  
J. BLACKFORD JR-55  
D. BURFORD-70  
C. CHAMLEE-40  
W. CHERRY-61  
E. CLARK JR-22  
W. CLARKE JR-49  
A. CLEPHANE JR-64  
W. COPELAND JR-55  
T. CORWIN SR-19  
L. COVEY-60  
T. CRENSHAW JR-46  
R. CUNICO-75  
H. DANIELL JR-48  
J. EADIE JR-72  
J. EXLEY-20  
J. FOSTER-18  
A. GANDY-52  
M. GESNER-43  
N. GLOVER-73  
R. HANLIN-54  
D. HAWKINS-30  
A. HENDRY-54  
T. HINTON-69  
R. HOOKS-17  
W. HOWARD-30  
G. HOYT-37  
L. KELLY-74  
K. KIRKLAND-67  
J. LINDSAY JR-51  
E. LYONS-53  
F. MANLY-42  
R. MATHESON-68  
M. MCFARLAND JR-19  
P. MCGINNIS-74  
S. MEHL-69  
J. MICHAEL JR-55  
B. MICKLER JR-66  
H. MONTAGUE-41  
J. MURFEE IV-75  
D. PAYNE-46  
D. SCHULZ-53  
S. SHAWER-42  
J. SMITH-20  
J. SMITH-73  
L. SMITH III-72  
W. STEWART-26  
J. THOMAS-36  
J. TRAMONTANIS-75  
C. WESTMURELAND-58  
J. WILKERSON III-61  
C. WOOD-13  
C. WORD JR-43  
T. YON JR-46

#### ALPHA EPSILON NORTH CAROLINA ST

R. ALMOND III-71  
E. ANDREWS JR-48  
F. AYERS-53  
C. BASSETT-54  
W. BRADLEY-75  
H. BUCHANAN-54  
J. CHAMBERLAIN JR-50  
R. COLEMAN JR-36  
W. EDWARDS-73  
D. FREEMAN-45  
J. GOODMAN-63  
C. HAYWORTH-33  
J. HITCHINGS-66  
W. JIVE-75  
J. JONES-66  
J. JONES-74  
J. LOGAN-43  
B. MCCONNELL-30  
E. MCNEIL III-73  
J. MURRAY-39  
E. PATE-17  
R. PIERCE-41  
J. RANKIN-28  
R. RICHARDSON-70  
P. ROSE-57  
F. SOUTHERLAND-36  
C. SPRATT-32  
S. STANLEY-70  
J. STEEN JR-47  
S. STORY JR-75  
E. TATE-61  
C. WHITLEY JR-66

#### ALPHA ZETA ARKANSAS UNIV OF

L. ALWORTH-59  
L. ARNOLD-66  
D. ASHCRAFT-60  
J. BASORE-48  
B. BELL-40  
G. BELL-27  
B. BOUTAUGHT-22  
B. BREWER-49  
K. BROOKS-26  
J. CAMARATA-59  
H. CHRISTENSEN-40  
S. CLARK-46  
M. FELTZ-40  
R. FERGUSON-35  
J. FRANK-37  
F. FRALAY-58  
C. GIBBS JR-51  
J. GORDON-37  
H. GRIFIN-37  
R. HAMILTON-37  
G. HAMMONS-44  
J. HCLT-30  
W. HUDSPETH III-71  
M. INWELLS-28  
E. KIRK-45  
E. LEOPARD-72  
R. MAGNESS JR-65  
M. MALLIGAN-43  
N. MANN-58  
R. MCGILL-60  
D. MILUM-30  
A. MOORE JR-48  
J. MURPHY-69  
J. MURKEY JR-56  
L. NICHOLAS-60  
D. OWENS-73  
M. PEARSON-28  
W. PENN-73  
P. PRIEST-29  
V. PIAK-19  
T. REED-69  
D. REYNER-23  
J. RHODAS JR-47  
W. ROUSE-39  
B. SCHULTZ-46  
M. SCHUMCHY-44  
J. SHARP-69  
S. SHARP-21  
J. SIEPMAN-64  
M. SMITH-55  
P. PEER-73  
W. STOVALL JR-42  
K. WADLEY-43  
K. WALKER-73  
R. WATTS-73  
G. WETZEL-46  
C. WILSON-27  
R. WISEMAN-30  
H. WRIGHT-54  
M. YOUNG-46

#### ALPHA ETA FLORIDA UNIV OF

I. ADAMS-50  
K. ANDERSON-48  
P. ARMSTRONG-68  
F. ARNALL-51  
G. AUSTIN-56  
H. BENNETT-25  
C. BETTS-36  
W. BOOZER JR-46  
T. BRADFORD-15  
T. BROWN JR-54  
B. BUSHNELL-25  
R. CAPELLUTO-77  
H. CLEAVELAND JR-43  
R. COLE JR-49  
R. CONLEY-50  
L. COX DDS-59  
F. COX III-51  
R. CRONACHER JR-68  
G. DELATOURRE-70  
DEVANEY-61  
W. DIAL-27  
P. DONATO-74  
C. DUNCAN-18  
E. VERETT-49  
E. FEASTER-31  
K. FERGUSON III MD-55  
L. FLOYD III-42  
F. GONZALEZ-71  
W. GWIN-59  
H. HARBY-78  
W. HAYES-49  
B. HOGG-42  
D. HOPKINS-47  
R. HUBBARD-24  
A. JACKSON-28  
J. JACKSON-21  
J. JOHNS-52  
J. JOHNSON-42  
H. JOHNSON-58  
W. JOHNSON III-67  
G. JONES-45  
G. KASCH-53  
S. KELLY-45  
R. LEONARD-63  
W. LEONARD-49  
G. MASSEY-39  
G. MATEKA-63  
D. MAY-71  
L. MCLEAN II-59  
W. MOORE-18  
J. MORGAN-39  
B. MURDO-46  
H. PETERSON-23  
P. PETROZELLA-68  
N. POWELL DDS-46  
J. POWERS-53  
C. ROBERTS-49  
C. ROBERTSON JR-27  
C. ROU-42  
C. ROWLETT-40  
D. SCHIRRA-26  
J. SEWELL-53  
J. SHERRON-54  
A. SHOEMAKER JR-50  
S. SIMPSON-41  
R. SKIPPER JR-36  
A. SMITH-66  
C. SMITH II-69  
N. SMYDER-18  
S. TEAGUE-04  
R. THOMAS-70  
R. THOMPSON JR-49  
T. THULBERY-49  
T. THURLOW JR-55  
R. TOTILAS-58  
P. VROOMAN-25  
J. WENDEL-55  
J. WEITSTEIN-28  
D. WHITE-72  
A. WILLIAMS JR-42  
T. WILLIAMS-17

#### ALPHA KAPPA MISSOURI UNIV-ROLLA

D. ALLAN-71  
P. AUBUCHON-45  
D. BAKER-59  
T. BARNETT-69  
S. BOYD-73  
J. BRINTON-71  
S. CARRIERE-60  
R. CHAPMAN-66  
W. CLARK-41  
W. COLLINS JR-49  
D. COX-59  
R. EHRICH JR-41  
E. EPEL SHEIMER-51  
T. FENNESSEY-75  
W. FESLER JR-56  
R. FLESCHNER-73  
C. FREEMAN-49  
L. FULLER-42  
R. GUND-37  
W. HANBACK-20  
R. HANNA-40  
H. HERDER-23  
D. HOFFMEISTER-63  
F. HOHENBERGER-66  
G. HOLLAND-61  
J. JONES-53  
R. KALLMEIER-57  
J. KAMP-76  
B. KEIL-49  
T. KING-76  
J. KIRKPATRICK-27  
R. KLODE-44  
D. KRAUSE-29  
R. KREUTZER-43  
H. KREUER-49  
R. KRUER-50  
A. KULINIEWICZ-73  
M. LASKER-61  
J. LATZER-57  
J. LOEHLE-57  
P. LOVE-24  
B. LUTZ-71  
J. MCNICHOLS-47  
R. MILLMAN-63  
J. MONTGOMERY-46  
W. MUKKIS-26  
H. NICHOLAS-38  
T. PLANJE-77  
C. POMEROY-46  
M. POST-74  
V. POWELL-52  
R. RUENHECK-47  
C. SCHUMANN-52  
S. SOWERS-59  
B. STIRKAT-63  
S. STONE-29  
J. STUKES-78  
J. TESKE-59

#### ALPHA THETA WEST VIRGINIA UNIV

W. ALLEN-54  
T. ARNETT-26

D. ATKINSON-66  
A. BARRETT-58  
B. BOBER-69  
W. BREWSTER-26  
B. BRINKER-66  
R. BROADWATER-61  
M. BRODSKY-66  
F. CASHMAN-58  
W. CASKEY-33  
J. CATRELL-67  
W. CURRENT-60  
C. FLOWERS-26  
H. FOY-25  
J. FREEMAN-57  
J. HALL-72  
J. HART-70  
R. HEID-61  
J. HIBBS-55  
HOPKINS-37  
T. HORVATH-75  
E. JOHNSTON-25  
C. KIRTLLEY-26  
R. KITTLE-38-49  
J. LAUGHLIN JR ESQ-60  
M. LUKEY-65  
G. MCNEES-66  
G. MEREDITH-58  
M. MORRIS-59  
F. NEILL-36  
G. ROWLAND-52  
R. SANDERS-70  
R. SCHMIDT-48  
H. HOFFFLER-66  
T. SOWINSKI-60  
G. SUMMERS-78  
D. VAUGHN-60  
F. WARDE III-69  
F. WEHL-60  
C. WYNHAM-28

#### ALPHA IOTA MILLSAPS COL

R. AUBERT JR-68  
M. BEBENSEE-69  
R. BERRY-49  
W. BIZZELL-36  
R. BLOUNT-55  
R. BLOUNT-25  
E. BOATNER-20  
B. BRENT-65  
C. BUSH-66  
B. BUTLER-53  
C. BUTLER-47  
C. CAGLE-46  
F. CALHOUN-23  
F. CALLON-69  
J. CASTLEN-32  
C. CATTLEGE-53  
G. COLEMAN-78  
H. COLLINS JR-19  
W. CUNNINGHAM-27  
T. DEWEES-64  
R. EGGLE-33  
W. ELLIOTT-57  
J. FINLEY-57  
H. FLOWERS-29  
A. GAINY JR-37  
W. GATY-19  
J. GREEN JR-56  
W. HARVEY-35  
L. HASSELTINE JR-65  
G. HICKS JR-69  
H. HOLLINGSWORTH JR-43  
D. JANSSEN-44  
W. JEANES-56  
W. KERR-56  
R. LEAKE-55  
G. LESTER-49  
R. MCCLINTON-33  
W. MCKIE JR-68  
J. MOORE-51  
J. MOORE-69  
L. NAVARRU-39  
W. NEILL-42  
C. PHILLIPS-60  
H. RAMSAY-26  
REEVES-62  
W. RIECKEN-50  
V. SMITH JR-50  
W. STUKES JR-23  
J. TATUM-65  
L. THOMAS III-67  
L. WATKINS JR-19  
E. WHITE JR-30

#### ALPHA KAPPA MISSOURI UNIV-ROLLA

D. ALLAN-71  
P. AUBUCHON-45  
D. BAKER-59  
T. BARNETT-69  
S. BOYD-73  
J. BRINTON-71  
S. CARRIERE-60  
R. CHAPMAN-66  
W. CLARK-41  
W. COLLINS JR-49  
D. COX-59  
R. EHRICH JR-41  
E. EPEL SHEIMER-51  
T. FENNESSEY-75  
W. FESLER JR-56  
R. FLESCHNER-73  
C. FREEMAN-49  
L. FULLER-42  
R. GUND-37  
W. HANBACK-20  
R. HANNA-40  
H. HERDER-23  
D. HOFFMEISTER-63  
F. HOHENBERGER-66  
G. HOLLAND-61  
J. JONES-53  
R. KALLMEIER-57  
J. KAMP-76  
B. KEIL-49  
T. KING-76  
J. KIRKPATRICK-27  
R. KLODE-44  
D. KRAUSE-29  
R. KREUTZER-43  
H. KREUER-49  
R. KRUER-50  
A. KULINIEWICZ-73  
M. LASKER-61  
J. LATZER-57  
J. LOEHLE-57  
P. LOVE-24  
B. LUTZ-71  
J. MCNICHOLS-47  
R. MILLMAN-63  
J. MONTGOMERY-46  
W. MUKKIS-26  
H. NICHOLAS-38  
T. PLANJE-77  
C. POMEROY-46  
M. POST-74  
V. POWELL-52  
R. RUENHECK-47  
C. SCHUMANN-52  
S. SOWERS-59  
B. STIRKAT-63  
S. STONE-29  
J. STUKES-78  
J. TESKE-59

B. TREIBLE-28  
H. VACCA-57  
B. WAGNER-46  
W. WALKER JR-33  
E. WEIDNER-76  
R. WIGEL-31  
C. WEIS-40  
V. WILTHURTH-15  
C. WHITTE-27  
C. WINTER-57  
D. WISCH-72  
R. WOLF-48  
R. WOOD-45

#### ALPHA LAMBDA GEORGETOWN COL

L. ALBRIGHT JR-48  
R. ALSTON-34  
C. BILLIPS-29  
R. BOWLING-57  
E. BRASHEAR-36  
L. BRASHEAR-26  
C. BUCKNER JR-45  
M. BURSON-77  
E. CAMPBELL JR-47  
R. CAMPBELL-62  
L. CARR-63  
J. DAVIS-18  
E. DEUSNER-59  
J. GLASS-92  
J. GUNN-78  
S. HEARN-26  
F. ISON-54  
G. JACOBY-21  
J. JOHNSON-34  
J. MARSHALL JR-59  
M. MCGAMMON-73  
W. NASH-16  
W. NASH JR-58  
D. PAISLEY-32  
D. PARKS JR-62  
L. PATTERSON-16  
W. PIERCE-21  
M. PRICE-40  
W. RIDDINGS JR-59  
D. RINGS-70  
W. SNYDER-36  
D. STALLARD-63  
T. TRUNNELL-21  
V. VASEL-29  
W. WARD-13  
J. WITKAMP-48  
N. WITKAMP-42

#### ALPHA MU UNIV OF GEORGIA

G. BAILEY JR-58  
T. BROOKRICH-47  
V. LISSNA JR-38  
L. CLARKE-52  
M. CUDDA-73  
R. CURRY-30  
R. DONALDSON-53  
J. EATON JR-54  
L. FETZER-30  
M. HALLIGAN-68  
J. HATCHER-41  
R. HILBURN-53  
A. HILL-71  
H. HOLDER-73  
M. HORN-71  
J. HURST-30  
L. JERKINS-42  
W. LEWIS-58  
R. LUCKIE-71  
J. MAMALAKIS-69  
G. MOORE-49  
H. OWENS-30  
C. PAINE JR-33  
R. SIEG JR-55  
J. SILKMAN-41  
F. SMITH-64  
D. SOSEBEE-55  
L. THOMPSON-48  
W. THURMAN-37  
W. WALKER-62  
L. WHEELER-53  
E. WIGGINS-38  
T. WOOD-46  
J. WORRALL-49

#### ALPHA NU MISSOURI UNIV OF-COL

A. ANTON-43  
J. BALLAR JR-18  
L. BAUER-27  
F. BERNARD-74  
F. BIHR JR-28  
C. BOHN-59  
T. BROWN-41  
R. BROWN III-71  
J. BURNS-49  
R. BURNSIDE-38  
B. BUSEN JR-56  
S. BYRNE-65  
N. CARLSON-73  
C. CRAUSE-58  
C. CURTIS-65  
C. DEER-77  
C. DICUS JR-41  
A. DORN-30  
R. DOUGHERTY-38  
D. DUNN-49  
G. ELLIOTT-23  
L. ESCHBACH-77  
F. FANGMANN-60  
S. GUNSE-52  
W. HELLER-10  
R. HICKS-64  
W. HUSSMAN-30  
A. JECKLIN JR-30  
D. JENKINS-50  
D. JOHNSON-31  
W. JOHNSTONE-51  
M. JONES-57  
P. JONES-18  
J. KYTIP-57  
J. LAMBERT-57  
D. LANE-66  
C. LEECH MD-52  
G. MANSELD-39  
G. MCCASLEY-47  
R. MCHANEY-51  
W. MCHANEY-60  
T. MILLES-39  
J. MILLER-26  
R. MILLER-46  
L. MITCHELL JR-30  
D. PACK-73  
L. PATTIT-57  
L. PIERCE-33  
S. RALLS-78  
D. REYNOLDS-25  
H. RICHSON-27  
A. RIGGS-29  
J. SAWYER-49  
T. SCHWEIGHART-64  
E. SIMER-49  
D. SQUIRES-61  
S. STEFFENS-62  
C. STROM-63  
D. SWEENEY-31  
C. TALBERT JR MD-53  
J. THOMPSON-74



22 S&amp;D



D. HARDIN-52  
H. HOLLINGSWORTH JR-48  
W. HOWELL-28  
R. JOHNSON-34  
H. KUBEY JR-51  
J. LEAVELL JR-19  
R. LISH-73  
A. MCCARTHY-39  
K. MCFATRIDGE-67  
H. MEALER-28  
U. MOERNER-19  
S. NORMAN-23  
W. PEARCE-33  
R. PETCH-73  
D. REILLY-50  
W. RIDDLE-36  
L. SESSUMS-66  
J. SMITH-54  
L. SMITH JR-39  
T. SMITH-61  
T. SNIPES-47  
J. WADSWORTH-66  
S. WAGGONER-22  
R. WILLIAMS JR-36  
F. WILSON-72  
W. WRIGHT-55  
R. WYNNE-25

# BETA ETA ILLINOIS UNIV OF

L. ADAMS-68  
W. ANDERSON-20  
W. ARMES-33  
R. BELL-25  
C. BISSELL-21  
W. BOI-71  
C. BOWSHER-50  
J. BOWSHER-50  
D. BUSER-56  
R. CARLSON-52  
S. CHRISTENSEN-25  
S. GULLEN-72  
D. CURRAN-76  
W. DALITZSCH JR-57  
M. DENNIS-56  
GIBBS-28  
T. HANOVER-73  
G. HECK JR-50  
H. HELSING-22  
E. HEY-31  
W. JACKSON-49  
T. KARCH-70  
K. KASMA-72  
F. LACKEY-25  
J. LEGRAND-67  
L. LEMPE-32  
V. MCBROCK-25  
R. MCCRAHY-55  
U. MILLER-30  
G. MORGAN-30  
W. MUMFORD II-41  
U. GERMAN-27  
D. DRAM-28  
J. PARKER MD-29  
K. PULCIPHER-17  
J. QUICK-37  
T. SCHUCK-64  
T. SCHWARTZ-71  
J. SOLIN-43  
P. STELLA-65  
J. SUTER-59  
D. SWANSON-66  
W. THIEHMAN-37  
G. THURSON-58  
M. TODD-31  
J. TURNER-52  
L. WATT-30  
T. WEBER-72  
R. WEISE-40  
R. WOJZESKI-50  
R. WOLD-50  
R. WYLLIE-48  
A. YODER-77  
J. YULE-28  
M. ZETTERHOLM-20  
G. ZIMMERMAN-29

# BETA THETA CORNELL UNIV

W. ANDREWS-61  
E. AVERILL-24  
G. CLINK-24  
K. DODD-76  
R. DUNKIJACUBS-74  
C. DYER-17  
J. FIENI JR-75  
W. FLOYD-42  
W. FRANKLIN-42  
R. GOEGEL-70  
C. GRAHAM-41  
C. HAINZ-49  
R. HELBIG-49  
M. JOHNSON-76  
M. LAMAY-69  
J. MANGANO-61  
R. MOREE-25  
E. MOSHIER-21  
J. MURNIEKS-67  
M. NESTLE-76  
F. OBRIEN JR-28  
N. RANDALL-25  
R. REYER-37  
A. SHUFORD JR-28  
W. STIPPERLY-76  
K. SPEAR-20  
J. STRICKLAND-42  
K. WARD-71

# BETA IOTA BELLOIT COL

H. AUSTIN-22  
C. BRANDRUP-20  
J. DIXON-31  
D. EBERT-55  
C. GATES-24  
E. PINNOW-29  
W. SANNWALD-60

# BETA KAPPA EMORY UNIV

E. BRADLEY-25  
D. CAYCE III-48  
L. DAVIS-70  
E. DUNTON JR-61  
N. FRANKIAS-56  
R. GARRETT-74  
R. GODDARD JR-46  
M. GREER-49  
H. HILL-48  
W. HOOVER JR-70  
J. HUNT-22  
C. JOYNER JR DDS-31  
E. KING-68  
T. LAMBERT-56  
C. MARTIN-71  
D. MCGOWAN-71  
J. MCLELLAND-47  
C. MEYER-48  
B. MINOR-49  
L. NORRIS-62  
W. NOTTINGHAM-30  
W. OTT-29

## GENERAL FUND EXPANSION THROUGH THE 70'S DUE TO ALUMNI DOLLARS

Year	Loyalty Fund Contributors	Total Dollars Contributed	Average Gift	Percentage of General Fund
1979-80	5,448	\$121,094	\$22.23	13.6%
1978-79	3,876	94,667	24.42	12.5%
1977-78	4,859	83,880	17.26	13.5%
1976-77	3,670	65,611	17.88	11.1%
1975-76	4,291	62,808	14.64	11.4%
1974-75	2,361	36,493	15.47	7.9%
1973-74	1,665	15,675	9.41	3.7%
1972-73	4,752	35,251	7.42	7.8%
1971-72	4,530	36,441	8.04	8.2%
1970-71	2,760	29,366	10.64	6.6%

S. OWENS-37  
R. PENT-44  
D. SARGENT-24  
J. SMITH-56  
W. TIPPINS-22  
W. TUCKER-29  
A. UNDERWOOD JR-51  
G. WALKER JR-20  
R. WALKER-47  
R. WATSON JR-55  
D. WEEMS-23  
J. WELDON-47  
H. WELLS MD-42  
G. WILLIAMS-48  
J. WILLIAMS-42

# BETA LAMBDA WASHINGTON UNIV

J. BARNARD-54  
K. CHATTEN-49  
J. CONWAY-51  
R. COOK-56  
R. CREWS-37  
M. DEW-32  
F. DOEPKE-32  
H. ELDER-31  
R. EMONT-35  
H. FLETCHER-36  
T. FRICKE-28  
R. GEREAX-48  
D. GREBE JR-40  
L. GREGORY-30  
J. HARKING-25  
C. HELLWIG-30  
W. HOMER-29  
F. JUROTICH-60  
R. KNEWITZ-26  
F. LANGE-25  
H. MCCANN-35  
A. MEISENBACH JR-30  
A. MOISE-30  
J. SCHNABACHER-49  
C. SINGLETON JR-26  
J. SMITH JR-25  
W. VALENTINE-32  
E. WIND JR-43  
R. WOBUS-28

# BETA MU TEXAS UNIV OF

J. ADKINS-66  
W. BARROW-20  
B. CAMP-38  
R. CAMPSEY PHD-63  
R. CLARKE-40  
R. CURRIE III-73  
V. DEMENT-66  
M. DITTO-58  
M. ELLIOTT-47  
J. FREDERICK-55  
W. GARDNER JR-45  
L. GRACE JR-71  
C. GREEN-20  
P. HERDER-35  
D. HICKAM-65  
R. HITTSON-22  
J. HRUSKA-56  
J. HUDSON-61  
F. INGERSON JR-60  
F. JENKINS MD-54  
E. JONES-48  
J. KENDRICK JR-51  
M. KING-52  
A. LOCKLIN-54  
F. LUCE-48  
A. LUTGE-53  
C. LUNN-20  
E. MAYFIELD-36  
J. MCCULLICK-44  
J. NABORS JR-60  
W. NORMAN JR-40  
R. OKELLY-65  
R. ORRCPA-55  
P. OVIATT-74  
F. PARKER-65  
T. PRIMEAUX-51  
V. PUMMILL-46  
R. RABKE JR-52  
C. ROGERS-47  
R. ROSEN-59  
T. SAUNDERS-31  
C. STEPHENS-47  
C. SUBLETT-30  
H. TERRY-57  
J. THOMPSON-62  
T. TOLER-71  
R. TURNHAM-49  
N. WALSHORF-57  
C. WATKINS-31  
L. WILBURN-55  
S. WOODWARD MD-43  
C. WRIGHT-21

# BETA NU OREGON ST UNIV

R. BUDAH-75  
G. CHAMBERS-64  
W. DUNCAN-26  
H. HALSTEN-61  
G. HARRIS-24  
A. HUDSON-65  
G. JENKINS-23  
J. KIMES-76  
F. LORE-28  
H. MARQUIS-30  
R. DESCH-72  
N. POPPE-75  
J. RIDDLE-21  
T. ROBERTSON-64  
M. RYAN-72  
H. STEWART-23  
G. WEBER-49  
W. WYLIE-69

# BETA XI WISCONSIN UNIV OF

C. ALT-31  
D. CUTTING-36  
R. FALK-53  
R. JOHNSON-52  
J. KELLER-48  
H. KISSINGER-43  
W. LARSON-48  
N. MARTENS-25  
C. MATTHUSEN-28  
J. MERRIMAN-52  
R. MILLS-52  
C. MINSHALL-20  
R. NEUMANN-40  
K. NORDSTROM-34  
F. RAESCHEN-38  
R. REMMEL-37  
D. SHANE-48  
J. SNELL-55  
M. TILLISCH-20  
L. WADDE-21  
R. WEEKS-42  
J. WERT-55  
O. WYNN-28

# BETA OMICRON OKLAHOMA UNIV OF

J. BACHTLE-27  
C. BEIL-55  
C. BLANKENSHIP-50  
J. BREWER II-77  
B. BROWN-20  
M. BUNTZ-73  
K. CLARK-66  
K. CLARK-73  
J. COLE-65  
M. COLE-39  
M. COLLINS-62  
W. CRAM-26  
T. CREEDON-70  
B. CULP-56  
J. DALE JR-62  
M. DAYTON JR-41  
A. DEBELLIIS JR-65  
A. DOUGLAS-33  
E. DOUTHITT-73  
R. DUNCAN-27  
G. FARRAR-70  
R. FITZGIBBONS-61  
J. GEHL-64  
G. JERSON-28  
M. KING-78  
R. HARRELL-46  
G. HESTER-60  
B. HUNT-65  
H. HUNTZICKER-65  
R. HYER-55  
E. JAMES JR-55  
W. JAMES-73  
J. JUMAN-48  
R. KOLTER-21  
J. LANDES-29  
H. LAWRENCE-23  
J. LESLIE-70  
T. MALSON-69  
M. MARKO-62  
M. MILLER JR-32  
J. MISKOVSKY-34  
R. MORGAN-70  
G. MUMFORD JR-49  
C. NELSON-50  
R. NELTUNE-33  
B. NOWERY JR-32  
P. OBRIN-70  
G. PATCHETT-20  
F. PENN-30  
J. PERELLES-73  
G. PIRTELL-31  
A. PUGH III-70  
R. RAYMOND-50  
H. SCOTT-23

# P. SIMPSON JR-55

F. SMITH-21  
F. SMITH JR-57  
O. SMITH-28  
J. STAMPER-33  
R. SUMNER-53  
T. TODD-67  
R. VARLEY-70  
R. WHITE-49  
J. WOLFORD-71  
J. WYNN-65

# BETA PI PENNSYLVANIA UNIV OF

J. ACCETTA-50  
J. ADAMS-51  
J. ALLEN IV-51  
W. ARMINGTON-45  
R. BECK-40  
W. BROWN-62  
K. CABLE-29  
J. CATANIA-71  
G. CELLA-48  
C. COBB-25  
M. COHEN ESQ-65  
A. CRAMER JR-47  
D. DEVELIN-21  
D. DOLP-50  
F. EDMAN-73  
W. FENIMORE-22  
C. FENTON-62  
I. FRAZER-73  
M. GOLDFINE-64  
M. GOLDSWORTHY-72  
A. GOTTSALK JR-41  
K. HARDING-49  
W. HARRELL-30  
J. HEASLIP-74  
D. HERMAN-77  
J. HERMAN-72  
H. HERR-23  
K. HERR-22  
J. HIPPEL-20  
W. HUYLE-25  
J. JUDD JR-24  
J. KECK-75  
H. KELLY-22  
R. KOPPELMAN-62  
S. LEVENTHAL-67  
J. LEVINE MD-70  
J. LINTON-43  
J. LIVELEY-56  
J. MOORE JR-45  
M. MOSKOWITZ MD-58  
H. MYERS MD-59  
J. NEWBOLD-20  
M. NEWMAN-73  
M. ODGERS-20  
E. POLLAKU-28  
W. PORT-27  
W. POWELL-21  
T. PROCH-49  
S. KAMIREL-73  
E. REINSCH-22  
P. RESZUTEK-76  
M. SELIB-63  
W. ROBER JR-76  
J. RULON-23  
E. SCHMIDT-47  
M. SELIB-63  
M. SEMANIK-72  
R. SHAHAN-49  
S. SIEGEL-66  
J. SIMPSON-38  
H. SMITH JR-35  
T. SOTOS-67  
R. SUSSMAN-69  
L. TARNOFF-72  
T. TAYLOR-65  
J. THOMAS JR-53  
G. TRIMMER-47  
W. VANDINE-22  
P. VANDYKE-36  
J. WETTS-11-49  
T. WIESENECK-72  
R. YOUNG JR-51

# BETA RHO COLORADO COL

A. BRUNELLI-25  
W. FAIR-22  
R. LEISY-20  
E. MOODY-24  
W. SWENSON-26  
T. WINANS JR-21  
L. YOUNG-22

# BETA RHO COLORADO COL

A. BRUNELLI-25  
W. FAIR-22  
R. LEISY-20  
E. MOODY-24  
W. SWENSON-26  
T. WINANS JR-21  
L. YOUNG-22

# BETA SIGMA CARNegie-MELLON UNIV

M. ADAM-71  
E. BAILEY JR-41  
J. BOWEN JR-43  
D. BRANOWEIN-68

W. BRAZELTON-76  
J. BRINDEL-30  
J. CANGALDSI-31  
W. ELSEY III-61  
C. EWING-24  
T. LEANING-48  
B. GORDON-86  
C. GOUGH-52  
K. GRAHAM-43  
J. HARPER-74  
W. HARRISON-22  
H. HAYDEN-22  
R. HOMANN-49  
O. JACOBSON-39  
J. JUBINSKI-60  
G. KAPLAN-69  
F. LEMPET-48  
H. LINDAHL-43  
D. LINDSTROM-40  
W. LOGAN JR-65  
W. LOGAN JR-38  
E. LUSTIG-60  
W. MCNEILL-26  
R. MEYER-60  
C. PASCO-67  
C. PECKO JR-66  
T. RATCLIFFE-64  
P. REGAN JR-59  
W. SANZENBACHER-27  
R. SAPPKE-52  
C. SCHATVET JR-59  
E. SCHMIDT-68  
J. SHARKEY JR-59  
S. SHEAKER-39  
S. SHERMAN-67  
R. SMITH-37  
B. STUTTS-75  
H. WAGONER-23  
J. WILKINS JR-27  
R. WOOD III-37  
R. YARDUMIAN-38  
H. YEAGER-28  
E. ZIDON-72

# BETA TAU MICHIGAN UNIV OF

R. BARSON-68  
E. BAXTER-24  
G. BOYD-68  
G. CULLEN-70  
E. ETCHELLS-30  
C. HAYS-39  
E. KEIM-22  
K. LINDQUIST-22  
R. MCPHERSON-23  
M. MUNGER-31  
H. RIPLEY JR-27  
K. SCHAFER-26  
J. THAYER-27  
P. VENTURA-68

# BETA UPSILON COLORADO UNIV OF

C. BARBERUSARET-34  
A. BODINE-36  
W. BRADLEY-24  
J. COFFMAN-56  
W. CONDON-41  
W. DESOUCHET JR-41  
D. ENRIGHT-48  
P. GRIFFITH-22  
E. GRIMES-44  
G. JUSTIN JR-36  
C. HANSON-66  
J. HARDESTY-39  
L. HONSTEIN-43  
D. HOSKINS-50  
M. MARKHAM-22  
J. MAYER-45  
G. MILLARD JR-36  
F. OBRIEN-50  
P. PANKEY-51  
C. RHINE-22  
C. RUNDELL-52  
W. SMITH-39  
P. TADDIKEN-40  
R. TOLSON-52  
J. TURNER-32  
V. VESELY-59  
C. WAYNICK-33  
J. WIXON-27  
W. YATES-28

# BETA PHI PURDUE UNIV

V. ALBERT-58  
W. ANDERSON-22  
L. ANTOINE JR-55  
A. BASHENOW-71  
B. BAXTER-65  
M. BAYNES-73  
R. BEAUDOUWAY-34



C. BEEBE-71  
M. BELL-58  
W. BERG-68  
R. BERGER-49  
C. BLAKE-27  
C. BLISS-38  
G. BOLING-67  
A. BOWES-22  
G. BOWLUS-52  
R. CASEY-24  
J. CIRAL-36  
J. COVINGTON-37  
J. DABASINSKAS-55  
G. DELAPLANE-40  
C. DENO-73  
W. DICKERSON-27  
M. DICKEY-44  
R. DONALDSON-41  
L. ERHARDT-66  
W. ERTLE-44  
K. EWING-60  
K. FITCH-58  
K. FLEMING-41  
D. FJLLAER-62  
P. GEISER-42  
W. GLADDEN-74  
G. GRANT-50  
J. GRAY-58  
J. HARKNESS-58  
H. HANKE-48  
D. HEDDEN-40  
L. HEIDT-62  
H. HEITRICK-23  
R. HOFER-54  
R. HOFMANN-66  
M. HUNTER-48  
H. JACKSON-26  
R. JUSTICE-58  
P. KELLEY-29  
J. KILLIS-74  
K. KILLMUTH-62  
P. KINGSLAND-52  
J. KISH III-58  
K. KUGLER-27  
J. LAMPARTER-75  
J. LANIER JR-43  
L. LAJNER-75  
J. LEE-76  
R. LUDMIS-48  
T. MADDOX-68  
B. MARSHALL-75  
C. MARTIN-41  
J. MASSE-76  
J. MCCOY-63  
M. MCNAMARA-64  
B. MONTGOMERY-64  
M. NICKEL-27  
V. NIEDNAGEL-75  
J. O'CONNELL-25  
R. ODMAN-30  
G. ODMOLT-74  
J. ORWIG-65  
R. PICCOTTI-74  
N. POWER-24  
P. PREUNINGER-60  
J. REICH-29  
F. REKOSIK-51  
B. RICHLINE-63  
A. ROSENDAHL-29  
R. RUSSELL-56  
H. SAMUELSON-70  
A. SANG-71  
J. SAWYER III-69  
D. SCAROLA-65  
R. SCHIER-61  
J. SCHWAI-61  
K. SELBY-31  
C. SILEK JR-70  
D. SIPES-75  
H. STALCUP-22  
E. STONECIPHER-29  
K. TAYLOR-24  
J. THOMPSON-54  
W. WARD-64  
H. WEDEL-59  
C. WOODWARD-50  
D. ZICKLAWSKI-76

#### BETA CHI MINNESOTA UNIV OF

R. BARTHOLOMEW-22  
T. KERN-26  
H. KLIPPEN-27  
A. LANGE-27  
J. NELSON-24  
J. REIERSON-31  
L. SLATER-25  
R. WITTENKAMP-28

#### BETA PSI MERCER UNIV

E. BURCH-30  
J. HOGAN-27  
M. HURLEY-26  
W. MORGAN-24  
T. SMITH-24

#### BETA OMEGA LOMBARD COL

H. HAINES-24  
H. HART-26  
H. HEDGECOCK-24  
J. MCILR-24  
J. MORAN-24  
L. MULLINEK-24  
H. MULLINER-24  
R. RYLANDER-24

#### GAMMA ALPHA ALABAMA UNIV OF

J. BEALLE JR-37  
J. BEESON-40  
J. BLACKWELL-72  
H. BOSTICK-90  
J. ADDELL-28  
R. CARPENTER JR-70  
J. CARR-50  
J. CARTER JR-40  
J. COBB-38  
H. COLVIN-57  
L. COOPER JR-67  
E. CREEL JR-36  
J. DANIEL II-63  
G. ELLIOTT-35  
N. EUBANK JR-54  
C. FLOWERS-51  
F. FOWLER-28  
G. HALL-38  
W. HAROWICK-29  
J. HAROY-36  
K. HARMON JR-69  
M. HARVILLE JR-69  
P. HAYGUD-31  
J. HORNE-33  
D. INGALLS-73  
C. JONES-26  
R. LACEY III-52  
J. LARY-29  
J. LOGAN-26  
J. LYON-28  
D. MARTIN-71  
G. MCCURDY JR-42

J. McDONALD-24  
R. MCKAY-42  
J. MCKEEN JR-42  
C. MORRIS JR-39  
W. MULLINS JR-61  
W. NELSON-24  
J. NERTH-55  
R. OGLE-61  
M. PAROUR-46  
R. PORTER-30  
T. RAST-42  
J. RIVES III-64  
F. ROLAND-57  
F. RYAN JR-75  
H. SANDERS-61  
N. SELF-61  
J. SELLERS JR-39  
P. SIEMMUR-71  
R. SMITH III-46  
R. SMITH-24  
W. SMITH JR-62  
W. SMITH JR-33  
T. SORRELLS-52  
J. SPARKMAN-24  
E. STABLER-24  
R. STEPHENS-62  
D. STEWART JR-62  
S. TAYLOR-51  
J. TERRY-47  
S. TIMBLE-62  
D. VERNON-40  
J. WATKINS JR-37  
S. WHITE-32  
N. WIMBERLEY JR-42  
J. WOOD JR-44  
R. WOOD-50

#### GAMMA BETA NEBRASKA UNIV OF

W. ALTSTADT-24  
W. BERGE-33  
D. CODY-72  
F. DECKER-29  
W. ELMELUND-24  
F. FELTZ-34  
R. FISCHER-34  
A. FREI-38  
H. JONES-32  
C. KINGERY-71  
K. KREIZINGER-69  
B. LAMBERT-71  
G. LOOMIS-25  
R. MAHAFFEY-36  
G. MATISON-37  
D. MOELLER-73  
V. NEDROW-25  
W. NEGUS-24  
W. NELSON-30  
R. RICHARD-29  
H. STANLEY-24  
E. STARBOARD-24  
F. STERNENBERG III-72  
T. STOUT-26  
M. SWANSON-32  
M. VONSEGGERN-29  
G. WARREN-68

#### GAMMA GAMMA DENVER UNIV OF

M. BOODY-33  
B. BUCKMAN-42  
D. BURNSIDE-47  
H. DILLON-25  
J. FITZELL-48  
Q. GINTER-28  
J. GRIEK-61  
R. HARRIS-40  
H. HART-34  
W. HOOVER-48  
J. JAHNEL-47  
W. JOVING-26  
V. MARTINO-58  
C. OGDEN-39  
G. PFREITZSCHNER-29  
R. RUDD-49  
C. SEEBURGER-32  
M. SPEARMAN-25  
A. STERNBERG-64  
A. STRAUGHAN JR-47  
F. SWANSON-54  
W. THURSTON-41  
K. TOMLINSON-49  
H. WALKER-25

#### GAMMA DELTA ARIZONA UNIV OF

A. AYERS-30  
P. BECKER-68  
A. BEHALL-60  
R. BELSHER-72  
J. BENEDICT-76  
K. BERRY-65  
R. BUTCHER-50  
C. CAGLE-55  
E. CALDWELL-37  
R. COLLINS-67  
D. CRISMON-31  
D. DUNIPACE-58  
E. GARDNER-34  
A. GERHARDT-30  
E. GREGG-56  
H. HESS-33  
W. HOGG-24  
L. HORRELL-24  
J. KAY-62  
R. MICHELSEN-46  
V. MILLER MD-66  
H. MULK-30  
T. MORGAN JR-44  
K. NAROI-65  
K. REEVE-69  
C. RHODES-24  
H. SALTER JR-43  
G. SEIDEL-27  
R. STEPHENS JR-24  
R. TAYLOR-47  
R. TRAHERN-75  
R. VENN III-67  
R. WELLS-47

#### GAMMA EPSILON UTAH ST UNIV

H. BARLOW-41  
F. COLEMAN-40  
C. CRAWFORD-39  
S. EGGEN-25  
S. EVANS-41  
J. FROVER-44  
R. HILL-38  
D. HUBER-52  
H. KILBURN-26  
J. LAMB-60  
S. LARSON-59  
U. MACDONALD-64  
G. PETERSEN-62  
G. POTTER JR-37  
C. RASMUSSEN-49  
A. RHODES-32  
J. ROSE-67  
E. SANFORD-48  
H. STAPSON-38  
H. STEED-69  
J. SUTTON-47

R. TAYLOR-64  
A. THOMAS-37  
B. TURNER-43  
L. WELCH-60  
W. WILKIN PHD-35  
GAMMA ZETA  
KITTENBERG UNIV  
D. ALLEMAN-26  
D. BORMAN-47  
B. BROWN-28  
M. MAULDIN-36  
M. DOWNING-44  
W. FISCHER-31  
C. GIBSON II-51  
K. GILBERT-61  
D. GOODWIN-73  
T. HARVEY-30  
P. HUNT-47  
U. KILLINGER PHD-28  
R. MEADOR-54  
C. PONT-20  
J. PUTNAM-48  
R. RISNER-55  
R. ROWLAND-66  
D. SEAVEN-34  
J. WELLING-65  
J. WHITELEATHER-26

#### GAMMA ETA U.S.C.

C. BALDWIN JR-46  
J. BRUFFETT-68  
E. BROOKS-54  
E. CHAVARRIE-46  
J. CLARK-32  
J. GAULE-65  
B. GIBSON-30  
G. GRAHAM MD-68  
E. HASS-29  
D. HOLMES-56  
R. HORNING-48  
H. KEAR-36  
L. NAKENS-66  
R. MARTIN-26  
L. MCILVEY-40  
J. MOIR-64  
J. NEUMOFF-31  
J. NICOLL-54  
L. PHILLIPS-51  
D. POWERS-27  
R. ROCKWELL-41  
C. ROE-70  
J. SCOTT-49  
C. SINGER JR-52  
C. SMITH-27  
T. STEVENSON-41  
L. TABER-38  
J. THOMPSON-42  
P. VAGNING JR-47  
T. VAUGHN-60  
R. WILTE-50  
M. WINN-66

#### GAMMA THETA MISSISSIPPI ST UNIV

H. ALLEY-30  
G. ALTESE-67  
H. ANDRESS JR-37  
W. AYRES-70  
S. BARRETT-75  
J. BENNETT-47  
J. BLAKNEY-71  
W. BOONE JR-53  
B. BOY-68  
C. BRICKELL JR-40  
R. CAPERTON-62  
G. CLARK-36  
J. CROWN-47  
T. CROOK-77  
D. CURRIE-60  
G. DENTON-41  
T. DENIS-69  
F. EICHELEBERGER-60  
D. ENGLAND-73  
D. FARRIS-73  
K. FRENCH-35  
D. GERMAN-56  
H. GUYNES JR-61  
J. GUYTON-27  
I. HAND JR-71  
W. HEGMAN-38  
R. HINES-39  
C. HULL-38  
W. JACKSON-54  
A. JOHNSON-67  
B. KONGE-54  
P. LANCASTER-52  
E. LUCASRT-27  
M. MCCORMICK-29  
E. NEILL JR-70  
J. OGLESBY JR-57  
J. PAYNE JR-48  
W. PITTS-47  
R. POLK-75  
J. PROVENZA-72  
E. RACH JR-47  
B. ROBINS-27  
G. ROBINSON III-69  
R. SCOTT-57  
H. SEEFELD III-64  
J. SMITH-77  
W. SMITH-75  
E. STEBBINS III-68  
T. SUTTLE JR-60  
J. SWETLAND-55  
W. TAYLOR JR-72  
H. WATKINS-57  
C. WEBB-66  
S. WEBSTER-63  
J. WELLS-62  
J. WHITE-64  
D. WHITLEY-64  
H. WILLIAMS-71  
J. WILSON JR-42

#### GAMMA IOTA MISSISSIPPI UNIV OF

R. ABRAHAM-66  
J. BARNETT-42  
G. BASS-37  
S. BLACK-34  
B. BRISTOW-68  
R. BROCATO-65  
J. BRUMFIELD-27  
S. CHRISTIAN-37  
T. COCHRAN-50  
L. COLLIER-68  
E. CRAIG JR-63  
H. DAVIDSON-68  
W. DAVIS-27  
T. DYE-28  
R. ELLIS JR-34  
J. FASULLO JR-71  
K. FOWLER III-67  
F. GAFFORD-30  
A. GAMOT JR-60  
C. GIBBS-46  
E. GOLDEN-76  
C. GOLDMAN-55  
R. GRAHAM-66  
C. GRAHAM-66  
L. GRICE JR-36

J. HARTLEY JR-61  
H. HINES-69  
H. HOLFIELD-68  
J. HUGHES-60  
H. HUTCHERSON JR-33  
F. JAMES-63  
P. JOHNSON JR-38  
C. KEMP JR-58  
C. KENT-27  
C. LENZ-37  
W. LISTON-50  
J. LOVETT-59  
M. MAULDIN-36  
D. MAULDIN-40  
J. MAY III-67  
A. MEADOR JR-62  
C. MIST JR-55  
R. MUNDSON-55  
C. MOORE-43  
G. PENCE-49  
J. ROGERS-76  
C. RUBLE JR-77  
J. SCHMELZER III-66  
R. SCRUGGS III-63  
P. SMITH-44  
W. SPENCER-75  
G. STEPHENSON-63  
W. TRUSTY-31  
A. WESTBRUCK-35  
J. WHITWORTH JR-52  
M. WILKESON JR-58  
R. WILKINSON-70  
H. WILLIAMSON-52  
H. WORK JR-47

#### GAMMA KAPPA MONTANA ST UNIV

F. BLASKOVICH-33  
C. BODS-60  
B. BRANER-51  
M. BRUNLAME-34  
A. CULP-69  
S. DAY-37  
J. DRIVER-47  
D. DRUMMOND-74  
J. ERKKILA-29  
G. GEARY JR-48  
G. GORN-60  
J. HALL-33  
J. HARDY-66  
H. HARRITY-28  
S. HUBLEY-72  
H. IRWIN-48  
J. JOHNSON-59  
F. LIQUIN-33  
K. MCKENNA-76  
C. MILLER-46  
T. MORRISON-28  
H. NELSON-36  
W. NELSON-39  
D. NICHOLSON-29  
L. PERSSOV-38  
R. ROSS-52  
P. RYAN-65  
H. SITZMAV-42  
D. SODARO-76  
G. TICE-65  
R. STOKAN-30  
N. STOLTENBERG-31  
J. SYMONDS-32  
M. THEISEN-72  
D. THORSON-42  
W. WALL-28

#### GAMMA LAMBDA LEHIGH UNIV

D. BARTHOLOMEW-67  
E. COLLINS III-32  
J. COLLINS JR-50  
J. DEAN-31  
T. FORSTALL-55  
J. FUSCO-77  
R. GAMBLE-30  
C. GARR-59  
A. GLANDOLF-55  
D. GLASSFORD-34  
K. GONDUS-29  
J. HUNTER-42  
J. KACIS JR-66  
R. NISBET-30  
R. NICHARUS-36  
W. SHERMAN-57  
J. SKELLY JR-30  
A. TOLKMAN-59  
R. WILLIAMSON-65

#### GAMMA MU NEW HAMPSHIRE UNIV

R. CAIN-57  
D. CONGUON-68  
M. CROTTY-73  
P. FELTNER-77  
A. FLANAGAN-50  
J. GLEASON-29  
B. HANLEY-53  
L. JOHNSON-59  
J. MOZENA-78  
A. LEWIS-29  
D. MATTHEWS-30  
R. McDONALD-77  
G. PAKAS-75  
J. PEARSON-40  
J. PERRETTIE-31  
J. PEKRONI-72  
R. RAMSEY-31  
J. SARGENT-72  
M. SMITH-29  
D. STONE-54  
V. SWAIN-29  
W. TIGHE-58  
T. TUTO-70  
K. TWITCHELL-30  
R. TWOMBLY-37  
E. WELCH JR-43  
D. WONG-74  
J. WOODROW-75

#### GAMMA NU IOWA UNIV OF

D. BARTSCH-54  
E. BLADON-30  
G. BUECHLE-52  
B. CARTER JR-39  
K. EIGHTON-52  
E. DREW-31  
J. FINK-32  
K. FLEMING-74  
D. GRAY-62  
D. HAVENS-37  
W. HAYEK-54  
R. HEDGLY-62  
L. HOEGH-29  
H. HUFF-63  
R. JOHNSON-55  
A. KAHL-29  
T. KNUTSON-68  
J. LAING-75  
L. LARSON-58  
M. LUPAC-75  
B. MARKWALTER-72  
M. MCCLARAN-34  
F. MCCONNELL-47  
F. MEYER-30

G. MICHEL-51  
R. MILLER-33  
A. MITCHELL-30  
L. PALMER-29  
K. PETERSON-71  
R. KASLEY II-74  
J. REEDER-52  
H. REUSCHLEIN-29  
I. ROSKY-55  
J. SHAW-30  
H. STEVENSON-38  
P. THOMPSON-32  
C. THENSTUP-38  
D. VANPEURSEM-31  
P. WALKER-64  
R. WARREN-60  
V. WEBER-30  
H. WOLFE-35

#### GAMMA XI WASHINGTON ST UNIV

K. BAKER-53  
G. BRISLAWN-29  
W. CCPNER-27  
D. DETIKER-78  
L. DODD-54  
R. ELLIS JR-40  
E. ELMGREN-72  
D. GANACHE-73  
P. GILCHRIST-29  
A. GIOLITTI-29  
A. HARTWIG-37  
L. JEPKINS-48  
K. KRAMER-38  
P. LIGHT-38  
D. MCLEOD-37  
K. MERRYWEATHER-32  
W. NELSON-36  
N. NEWBY-25  
R. PATTON-43  
R. PHILLIPPAY-29  
W. PICATTI-74  
E. REED-29  
J. SCHMEL-58  
D. SPARKS-50  
F. TUMINELLO-70  
J. WIESS-69  
R. MYATT JR-49

#### GAMMA OMICRON OHIO UNIV

R. ASIK-60  
N. BANFIELD-50  
D. BROWN-65  
L. CHAPMAN-63  
J. JACKSON JR-39  
G. GUERINGER-61  
W. FRITTS JR-70  
T. FULTZ-50  
M. GARNITSELDER-30  
G. ROSS-52  
R. HETZLER-39  
P. HOFF-47  
C. KENNEY-30  
P. KLINEINS-70  
J. LEASURE-56  
F. LINES-56  
C. LOY-51  
J. MCCLANAHAN-64  
J. MCCOLLUM-35  
H. MILLS-33  
G. MOYER-50  
G. NAPLES-65  
J. OLINGER-56  
L. RANOWSKI JR-56  
J. ORPHAN-36  
R. PAISLEY-58  
R. PETERS-54  
M. QUINN III-56  
M. ROEMER-73  
G. ROSE-33  
N. SIZER-31  
W. SLATER-30  
C. SMITH-30  
T. SVET JR-49  
R. THOMASON-63  
D. VANHURN-69  
W. WELLS-50  
V. WOLFF-41

#### GAMMA PI OREGON UNIV OF

J. ABRAMSON-66  
J. ALLEN-38  
B. BARTON-48  
D. DOLE-46  
W. FLORINE-68  
L. FREEMAN-48  
R. GENNETTE-40  
S. GLASER-64  
H. GRAY-41  
J. GRAY-41  
C. HUELTE-49  
C. HUSTED-50  
A. MAFFI-53  
J. MOZENA-78  
D. PIPER II-64  
J. SCHAEFER-31  
R. SHIPLEY-64  
T. SWENNES-53  
J. THIRL-44  
S. TINDELL-68  
D. TOWER-36  
W. VANNUYS-37  
J. VANZONNEVELD-70  
R. WEIR-60

#### GAMMA RHO NORTHWESTERN UNIV

K. ANGLEMIER-32  
W. BERNIE-67  
R. BLIETZ-48  
S. BRUNN-62  
J. JAMES-68  
J. FERRIS-32  
M. FISHER-58  
P. GERKEN-59  
H. GREEN JR-32  
C. JONES-38  
K. JONES-47  
K. JOVE-47  
G. LEMONE-35  
J. LUTER-44  
R. MATSON-32  
F. MCCABE JR-32  
R. MITCHELL-65  
P. MUGENSEN JR-42  
T. POKASKI-64  
D. RAHN-35  
T. ROTH-41  
R. SCHILDGEN-57  
R. SCHUDLER-67  
B. SCHUMACHER-59  
B. SCHREINER-49  
J. SEILINGER-43  
H. STANGE-39  
K. TAYLOR-45  
R. WAGNER-59  
W. WARNER-44  
G. WARREN-32  
C. WELLEPP-38  
G. WICKMIRE-66



# GAMMA SIGMA PITTSBURGH UNIV OF

R. APPEL-34  
T. BIDDLE-34  
R. BURKHARDT-40  
L. CHAMBERLIN-34  
K. COBURN-34  
N. CUCHMAN-39  
J. CUCHMAN-71  
S. CUMMINS-48  
P. DECOUL-38  
U. EBBERT JR-59  
R. ELLING-38  
T. FORBES-40  
R. FRIEDMAN-52  
J. GARINGER JR-45  
H. GEORGE-34  
W. GEORGE-41  
J. GRAHAM-42  
J. HARMON JR-55  
F. HUGHES-34  
M. KUMR-48  
M. LESNICK-71  
R. NAGEL-45  
W. UCHLING-72  
D. OSBORN-47  
J. PATTON-55  
T. PERKINS-50  
G. SAWYER-34  
R. SCHOFIELD III-47  
R. SNYDER-34  
H. STRICKLER-34  
K. STRICKLER-49  
T. TATES-34  
F. TRECINNICK-36  
G. VANHORN JR-64  
R. VERKLEIN-42  
C. WATSON SR-42  
M. WILLS-71  
J. WOOD-42  
J. ZUCKARELLI-70

# GAMMA TAU RENSSELAER POLY INST

G. ABPLANALP-35  
H. BICKEL JK-52  
S. BILJO-73  
W. BRIGGS-60  
G. BROWN-51  
S. CHAPIN-35  
E. COLLE-36  
C. COWLEY-35  
M. DEFF-48  
B. DENISON-76  
B. DILLON-61  
S. DOTY-61  
R. ESPUST-65  
J. CUTMANN-38  
C. HAASE-34  
C. HAIJ-35  
A. HADEN-60  
G. HEWLETT-35  
E. HUNTER-76  
A. JOHNSON-60  
R. KRAUSHAAR JR-73  
J. LANG-61  
R. LEER-47  
M. LECHE-76  
R. LONG-45  
M. LYON-54  
B. MCMAHUS-58  
J. MURRY-63  
G. MUELLER-61  
J. NERRIE-53  
P. OSTROFF-40-47  
C. PETERS-47  
W. REID III-64  
S. RUZADOWSKI-74  
A. SAGIT-74  
H. SCHAEFER-35  
H. SCHAEFER-47  
W. SCHOB JR-53  
I. SMITH-38  
N. SMITH JR-68  
N. SNYDER-72  
E. THORNE-52  
B. VANOSTRAND-47  
L. WALTON JR-43  
R. WATKINS-73  
M. WEISMAN-75  
D. WILCOX-39  
W. WILKES-60  
R. WILLIAMS-72  
A. WISTING-67  
W. WITZIG-39

# GAMMA UPSILON TULSA UNIV OF

C. AINSWORTH JR-68  
R. BABSON-72  
J. BAKER-39  
E. BIRMINGHAM JR-36  
G. BIRT-72  
M. BUTTERWORTH-73  
R. CHAPMAN-37  
H. CHARLTON JR-46  
C. CLARKE III-73  
R. COOPER-59  
W. CRUMP-46  
F. DAVIDSON III-48  
R. DAVIDSON-62  
S. EBY JR-36  
J. ELLINGTON-60  
J. FRANCIS-49  
G. GRAY-72  
M. GROVE-37  
R. GROVE-44  
J. HANDLEY-36  
H. HARMON-36  
B. HEARD-46  
T. HOFFMAN-65  
I. KEITH-47  
A. LONG JR-65  
E. MAYNARD-72  
W. McDONALD-39  
W. MOYERS-71  
G. NICKELS-48  
C. ROGERS JR-37  
R. RONCK-65  
W. VOGL-66  
L. WILLIAMS-47  
D. WILSON-37  
J. WRIGHT-36

# GAMMA PHI WAKE FOREST UNIV

J. BRANLEY III-73  
R. BRAY-57  
M. BRUEMMER-77  
D. BUMGARDNER-45  
C. CISE JR-64  
C. FERREZAN-60  
M. GALLAGHER-75  
D. GOLIGHTLY-63  
T. LONG-48  
J. MARTIN-59  
J. MCCABE-76  
R. MOORE JR-31  
P. NORFLEET JR-40  
G. PARKER-39  
D. PITMAN-69  
E. SMITH-58  
A. VIEHMAN-64

# T. WHEDEE JR-51

# GAMMA CHI OKLAHOMA ST UNIV

H. ADAIR-55  
M. ASHWILL JR-41  
D. BAGWELL-62  
R. BEVONI-65  
H. BOWER JR-55  
J. CASEY JR-55  
W. FENITY-39  
J. HARTLEY-58  
W. HAUSER-59  
C. HAYES-55  
C. JENKINS-51  
V. JORNS-39  
E. KARNES-43  
T. KELEHER-49  
J. MCLENNAN-67  
J. MCCLARY-69  
J. OLDHAM-47  
R. OLTMANN-47  
D. ONESKY-56  
D. REYNOLDS-47  
W. RICE-39  
R. TENNILLE-56  
N. ZUMMELLEN-54

# GAMMA PSI LOUISIANA POLY INST

H. BERNSTEIN III-45  
J. BETTS-36  
W. BUNDICK-49  
W. CLARK III-72  
J. CLAY-67  
W. COOKSTON MD-40  
E. EDWARDS-45  
T. FOSTER-74  
R. GREEN-64  
L. LATHAM-56  
J. LAUGHLIN JR-75  
W. SANDERS JR-75  
L. SMITH-71  
J. TURNER-43  
C. WYLY JR-53  
W. WYMOND JR-42

# GAMMA OMEGA MIAMI UNIV OF

A. ALONSO-66  
J. AQUINO-74  
C. BAAKE-38  
C. BARC-43  
BOLLE SR-53  
A. CARTER-50  
J. CEN-62  
T. CONNELL-58  
J. CONNORS-68  
C. CRAIG-46  
J. CURLIN-71  
B. DELLABIANCA-77  
G. DONOVAN-77  
E. EDWARDS-73  
A. FRANKLIN JR-49  
C. FROMHAGEN JR-47  
B. GRIER-52  
H. GUNDERDORF-53  
HAUCK III-76  
R. HELMS-60  
D. HENSON-47  
W. KERDYK-47  
KING-39  
J. MADIGAN JR-40  
M. MCGRATH-61  
G. MONTANO-68  
R. RIGNEY-31  
ROGERS-59  
E. SCHWENNEKER-66  
H. SHRAMER-47  
L. SLEPOM-48  
S. SPRENKLE-54  
N. STICKLER-50  
M. SWEET-70  
E. WALKER JR-51  
R. WELBAUM-51  
Z. ZAMKOV-70  
R. ZIESER-74

# DELTA ALPHA GEO WASHINGTON UNIV

V. ADAMS-55  
N. ALLRED-46  
R. BELL-46  
J. BURKE-47  
C. CRICK-52  
J. CRADLIN-43  
J. FITZGERALD-45  
R. GILHAM-41  
W. LYNCH-47  
J. PEGRAM III-54  
R. POND-47  
T. SPRADLIN-56

# DELTA BETA BOWLING GREEN ST

D. ALLEMAN-48  
B. BLAIR-68  
R. CLODER-65  
G. CHIPS-72  
M. CLANCY JR-58  
W. COLLIER-42  
D. COOK-54  
J. COURTAD-60  
D. COURTER-69  
A. DARWOOD-51  
B. DECKER-53  
DELK-51  
O. DUNLAP-44  
L. FIEDLER-61  
L. FORAN-56  
J. GILKRE-67  
J. FURRY-57  
J. GASAWAY-58  
T. GLICK-62  
D. GORNY-60  
R. GRAHAM-47  
J. GRANT-69  
T. GRANT-68  
G. GRIGGS-45  
D. GRIMM-62  
G. HAMS-42  
G. HELDT-75  
G. HENDERSON-48  
D. HERRIT-48  
H. HESS JR-51  
R. HESS-54  
E. HOMZE-49  
S. HUMMEL-72  
D. HUNTER-70  
E. HUNTZIKER JR-65  
H. HUTCHMAN-61  
J. IAROSKI JR-62  
B. KENNEDY-67  
A. KSIANZ-61  
J. LAKE-65  
R. LINDHURST-70  
A. LINZ-70  
R. LUCAS-60  
W. MARK III-69  
J. MASHEY-70  
R. MASON-60

# R. MCNAMARA-59

J. MILLER-42  
T. PENDERY-58  
D. POMMERT-70  
J. QUINITY-47  
D. RECKER-66  
J. RIEDL-62  
J. SAYLES-51  
D. SHAWK-42  
J. SHELTON-47  
E. WALTON JR-67  
E. WELDON-72  
R. WHITMAN-44  
M. WISE-57  
W. WOODWARD-65  
C. WRIGHT-59  
S. YOUNG-58  
J. ZAUGG-42

# DELTA GAMMA MIAMI UNIV

D. ANDREWS-53  
J. ANSHUT-74  
J. ARNOLD-55  
J. BALCH-54  
L. BARTELS-45  
C. BELL-75  
K. BURLOVICH-69  
J. CHINNICI-70  
B. COMINGS-54  
G. EHMAN III-74  
D. ERB-49  
T. HARVEY JR-55  
C. HOWEY-54  
H. JASPER-49  
F. JOLLEY-59  
B. KIRKPATRICK-67  
R. KLEY-51  
M. LEIBSLA-72  
R. LIS-67  
D. LITTLE-70  
D. MARKER-58  
J. MCFARLAND DDS-57  
F. MILLER-75  
G. PADDOCK-57  
P. PEASE MD-55  
P. PELLING-47  
D. PIPER-68  
J. PUFFENBERGER-77  
R. RIEBEL-66  
S. ROHE-53  
L. SHOOK-53  
R. SMITH-47  
J. STEPHEN-60  
M. STRATIS-69  
F. ZUMMLI-69  
S. THEIS-67  
P. THOMAS-75  
J. TREMAINE-73  
R. WELCH-48  
C. WILCHAC JR-54  
G. ZIMMERMAN-50  
W. ZIMMERMAN JR-56

# DELTA DELTA FLORIDA SOUTHERN COL

S. ANDERSON-54  
R. BROYLES-58  
B. BURKHOLDER-59  
J. CARTER-59  
A. CLAY III-73  
H. CLEMMONS JR-52  
A. CRAWFORD-51  
C. EVISON JR-65  
H. FOWLER JR-48  
M. GERLOSKY-73  
K. GIBSON-64  
D. GRIFITH-53  
H. HARRIS-68  
B. HERNDON JR-61  
J. HUNT-51  
J. HUNTS-55  
K. KINGBURY II-66  
D. KITE-72  
N. KUIKEN-68  
F. LUCE-47  
H. MANLEY III-77  
D. MATHES-52  
G. MCCORMICK JR-51  
E. McMULLEN SR-55  
G. NATHAN-60  
R. NUESNER-69  
PETER-61  
S. PIRTLE-69  
U. RINACA-47  
H. ROU II-58  
D. SITTERS-47  
D. SMITH-48  
D. SONENBERG-64  
D. TIPTON-55  
D. WORMWOOD-77

# DELTA EPSILON TENNESSEE UNIV OF

H. AU JR-71  
C. BARHAM-49  
E. BLAKE-48  
G. BROOME JR-48  
M. CHILDRERS-53  
N. CRANE-74  
T. EITELJORGE-74  
E. HARMON-57  
M. HULL-76  
N. KOCH-58  
D. MEYER-51  
J. PARKER-59  
J. PLATT JR-67  
C. SMITHERMAN JR-54  
DELK-61  
H. TRUNDLE-68  
M. WEAVER DDS-61  
E. WELCHEL-48

# DELTA ZETA MEMPHIS ST UNIV

R. AVERWATER-56  
R. BRACKHAY-59  
P. CAMPBELL-63  
B. CARTER-58  
F. CRAFT-54  
D. DOUGLAS-76  
R. EDWARDS-65  
J. FARMER-48  
R. FIELDS-67  
W. FREEMAN JR-51  
J. GARBALDI-71  
J. ANE-48  
G. HOLBROOK-52  
H. JACKSON-68  
W. JOHNS-65  
J. JOHNS-65  
H. MANSFIELD III-57  
J. MCAULIFFE-76  
J. MCCULLOUGH-70  
D. MCKINNON-61  
W. MORRIS JR-53  
B. OLSWANGER-49  
R. ORANS-66  
B. PEEPLES-61  
J. PETTY-59  
J. PITTMAN-53  
L. ROBERSON-68

# T. SLATTERY-71

C. TARAS-59  
C. THOMPSON-70  
R. THOMPSON-73  
M. TINDALL-64  
R. VOLLMER-60  
R. WALLACE-60  
L. YOHANEK-69

# DELTA ETA DELAWARE UNIV OF

T. BAKER-75  
J. BENSON-76  
W. BIGELOW-61  
B. COOPER-78  
J. CRIM-65  
J. EDENS-70  
T. GREENWAY-57  
M. HALEY-66  
M. HOLT-71  
J. KINCADE-65  
J. KING JR-63  
L. LACKY-73  
D. MARTIN-74  
C. MOER-62  
R. MOORES-53  
T. PERKINS-59  
F. RAINES-69  
R. RUDDICK-48  
J. SMITH-61  
J. THOMAS-61  
H. WILKS-73

# DELTA THETA ARKANSAS ST UNIV

J. ASTON-60  
C. BLANKENSHIP-60  
T. COOPER-78  
J. CRIM-65  
J. EDENS-70  
T. GREENWAY-57  
M. HALEY-66  
M. HOLT-71  
J. KINCADE-65  
J. KING JR-63  
L. LACKY-73  
D. MARTIN-74  
C. MOER-62  
R. MOORES-53  
T. PERKINS-59  
F. RAINES-69  
R. RUDDICK-48  
J. SMITH-61  
J. THOMAS-61  
H. WILKS-73

# DELTA IOTA MARSHALL UNIV

R. ANDERSON-48  
B. BLAUM-58  
R. BRABBAN-48  
T. DAMRON-53  
J. DAVENPORT-52  
R. DAWSON MD-48  
E. EVANS III-65  
T. FERRELL-72  
S. HADDAD-62  
F. HANSHAW-53  
H. HURT-69  
J. JOHNSON JR-49  
J. KENDALL-64  
C. KESMODEL JR-56  
D. KLEVAN-67  
K. MAIER-67  
F. MICKEL-52  
P. POLO JR-75  
J. RIFE-59  
R. RYBURN JR-55  
M. STEPHENSON-70  
G. TEMPLEN-55  
H. TROUTMAN-52  
M. WATTS-68  
C. WILKINS JR-54  
J. WIRTH-67  
W. WORTHAM II-59  
S. ZEMBA-72

# DELTA KAPPA CALIF ST-SAN DIEGO

J. BOWER-55  
A. BOYCE-63  
D. BROWN-61  
J. CLARK-67  
R. DAVIES-48  
J. DOWDY-48  
E. FORSETH-75  
E. GRANELL-52  
H. HABEL JR-50  
E. HALE-60  
H. HOUSENGA-51  
D. JANGAARD-59  
A. LENCH-54  
B. MARTIN-54  
P. MILLER-65  
K. MOY-61  
K. MONTGOMERY-65  
W. MORAN-50  
P. NEY-57  
W. PIRIE-53  
R. RITTER-50  
J. SARRA-61  
R. SAYER-75  
R. SCHNIEPP-49  
R. SEITZ-74  
J. SMITH-74  
J. SWORD-67  
S. VALENTINE-75  
M. VENTURA-58  
H. WHITTLESEY-77

# DELTA LAMBDA FLORIDA ST UNIV

G. BALLARD-72  
F. BODKER-50  
J. BROCK-76  
C. CUBBON-69  
D. DELAURA-64  
R. DOUGHTY-72  
J. FRENCH JR-64  
W. GILBERT-59  
H. GREEN-65  
H. HENNING-57  
D. HEPLER-76  
J. HUMPHRIES-66  
J. KEEN-73  
D. KRESGE-73  
C. KUSHMER-73  
G. MARTIN-50  
J. McMULLEN-64  
T. MILLER-69  
D. MIMS-71  
J. MONTANO-64  
W. MOORE-55  
C. PARK III-61  
J. PROVENCER-71  
D. SHIPMAN-76  
G. STONER-64  
M. SWEENEY-74  
M. WAGNER-68  
D. WRIGHT JR-78  
T. WURZBACH JR-64

# DELTA MU S MISSISSIPPI UNIV

T. CANNON-58

# E. CUMBEST-73

J. CUMBEST-76  
C. ELLER JR-60  
R. EVERETT-74  
T. HALL-73  
C. HARVISON-56  
J. HCLDER-63  
C. HLE-62  
R. MCCORMICK JR-66  
A. MCCRAW III-67  
C. MORRIS-75  
OWENS-65  
L. PATTERSON-63  
J. ROSE-76  
Y. SALINAS-68  
R. SAXON-65  
S. SCHUBERT JR-61  
M. STEIN-67  
J. STEOESSEL JR-67

# DELTA NU WAYNE ST UNIV

J. ADDY-65  
P. ARNOLD JR-63  
F. FARIA-65  
G. HAKALA-65  
R. HAYES-67  
J. HENTSCHEL-74  
J. KLEIT-61  
J. KHN-70  
A. LEPINE-73  
D. MICKUS-67  
J. MULLA-61  
R. RADTKE-65  
D. THURMAN-69  
E. WEATHERLY-55  
D. WHITE-66

# DELTA XI INDIANA UNIV

H. ABBETT-69  
BARR-69  
R. BISHOP JR-65  
R. BODKIN-65  
S. COTNER-77  
J. DEJON JR-52  
D. DUNN-66  
W. EMERY-53  
S. FUEGER-77  
R. GREVE-74  
HAZELINE-72  
M. HUGHES-69  
E. MARCUM-76  
G. MEYER-76  
J. MOHR-65  
MYERS-72  
E. PEASE-71  
J. RIBAR-71  
J. ROMJUE-73  
J. SHANAHAN-74  
J. SHANKS II-65  
W. SHAUGHNESSY JR-52  
R. SHOEMAKER-69  
W. SHORT-71  
G. SPUDIS-76  
J. VANDERKORP-77  
B. WILLIAMS-77

# DELTA OMICRON DRAKE UNIV

H. BALLY-65  
J. HCSPODARSKY-57  
J. JONES-75  
W. KENNEDY JR-50  
T. KNIESLY-71  
D. OSBORNE-50  
G. ROGALINER-69  
D. ROSEBERRY-63  
RUGG-63  
W. SAYERS JR-59  
J. STROM-71  
T. TAYLOR-75  
J. UCHMAN-63  
F. VAIA-64  
F. VILIMEK-66  
G. WEERS-66  
C. WILKINSON-65

# DELTA PI CALIF ST-SAN JOSE

A. ANDREWS-68  
E. BENSE-51  
F. BOHMEALK-56  
D. BRENT-67  
R. CASELLI-60  
D. CONOVER-64  
R. GLADDEN-57  
G. HEINRICH-67  
W. MAHAN-68  
MOON-67  
R. RIFFERTII-67  
J. WEILAND-71

# DELTA RHO LINFIELD COL

T. BADER-77  
G. BARKER-70  
J. BUSCHNER-62  
E. SCHBACH-50  
J. FRANKLIN-71  
J. HAKANSON-62  
F. HAMMERMAN-62  
C. HASSELBRINK-64  
P. HILES-61  
G. JAMESON-52  
R. LEDFORD-71  
J. MARSHALL-69  
J. MERCIER-67  
T. MESSECAR-61  
H. THOMAS-62  
B. TOOLE-74  
J. TRUESDALE-52

# DELTA SIGMA BRADLEY UNIV

G. CALE-70  
D. CANNEDY-50  
R. COLLINS-68  
R. DEVITT-66  
R. DONOVAN-53  
C. DRUCKENMILLER-50  
L. GABER-63  
G. GONDY-56  
C. GOODING-72  
R. HARRIS JR-69  
D. HEWARD-50  
R. HILL-50  
H. KAIKU-57  
W. LOMBARDO JR-69  
OLD-61  
D. POTEMPA-70  
D. RUST-74  
E. SCHULTZ-57  
R. SIEGLER-65  
J. STUHLMULDER-64  
D. SUMMERS-50  
B. TAYLOR-72  
R. TIMMONS-72  
J. UMARGER-69  
D. VALUKENAS-67  
W. WILKINSON-59



# DELTA TAU ARIZONA ST UNIV

J. ABRAHAM-72  
K. CARVER-65  
H. HOGAN-63  
M. JORDAN-76  
B. KRAAY-73  
J. LIEBERMAN-71  
T. MORRISSEY-73  
M. NATHAN-73  
B. NELCH-76  
N. PARKER-60  
C. PATTERSON-51  
A. PIEL-64  
A. RALPH-51  
T. SABEL-71  
W. VANLEER-63  
R. WASH-58  
J. WHITE-53  
J. WIPPERFURTH-53

# DELTA UPSILON STETSON UNIV

C. APPEL-53  
B. BATE-74  
S. CARBINE-61  
B. DRURY-69  
H. EVERTZ III-51  
R. FRIEDMAN-52  
J. GAINES-73  
J. KESLOW-77  
J. LITTLEJOHN-61  
A. LOWRY JR-71  
G. MAXWELL-65  
MOORE JR-68  
N. NGENT-66  
P. PANCAST-66  
K. PECK-70  
A. PIERSON-64  
R. ROGERS-74  
J. SCHIRMER-70  
R. SLEY-58  
J. STEVEN-63  
R. THOMAS JR-61  
R. WEBER-61  
R. WILEY-72  
P. WRIGHT-71

# DELTA PHI COLORADO SCHL MINES

D. BREHM-57  
J. UHRLAUB-51

# DELTA CHI NEBRASKA U OF-OMAHA

D. BUCKNAM-52  
D. CHASE-52  
R. FEAD-56  
N. GREEN MD-58  
N. GRIFFITH JR-61  
T. HELLIGSO-66  
R. KELL JR-56  
D. KERSEY-61  
J. KUBAT JR-54  
W. NABITY-52  
H. NEUMANN-74  
G. PENISTEN-52  
R. ROENFELDT-64  
R. SCHROPP-52  
J. SEEFUS-54  
C. SIPHERD-58  
D. SLAUGHTER-64  
R. SMITH-55  
R. SPRINGER-71  
R. SWITZER-65  
A. THOMSEN-54  
H. ZWIEBEL-55

# DELTA PSI MARYLAND UNIV OF

H. ANNESLEY III-70  
R. BANKS-63  
R. BASTEK-70  
H. BOYER-76  
P. COKE-69  
C. COOPER-54  
C. CULP-73  
W. DORER-68  
T. DURN-67  
R. EMMINGER-68  
H. FISK-52  
D. FITZGERALD-71  
V. HUSSEY-55  
P. JANKOVIC-63  
G. MILLER-76  
M. MITCHELL-52  
D. MORTIMER-52  
S. SHANER-69  
T. SHOCKLEY-67  
L. WARD-67  
L. ZEIDMAN-77

# DELTA OMEGA HIGH POINT COL

T. BLAKE-63  
G. ERN-60  
W. HEDRICK-63  
S. HOYT JR-64  
W. MANTZ-68  
B. MILLER-53  
B. PARTI-66  
J. PEACOCK JR-53  
L. POPE-69  
W. POYNER JR-57  
P. SEDBERRY-64

# EPSILON ALPHA TRINITY COL

D. ANGELICA-68  
M. BARRY MD-73  
J. CROWE-56  
C. EASTERBY-53  
L. ISLAMDF MD-53  
L. JACOBINI-74  
R. JOHNSON JR-54  
T. KOWALSKI MD-68  
H. MANIERRE-54  
J. MCGILL JR-53  
J. MCKELLY-56  
P. STEIN-65  
R. STRATTON-53  
B. SUNEGA-74  
S. SVIRIDOFF-69  
K. WEISBURGER-54

# EPSILON BETA VALPARAISO UNIV

M. ACHAMCHEN-69  
R. BATSON-55  
L. EBERHARDT-56  
P. GOEBEL-57  
F. KLEVE JR-65  
D. KOEPE-68  
D. MCLEAN-75  
J. MILL-62  
R. ORKFRITZ-62  
P. PREUSS-55  
R. SEEFELDT-54  
B. STAREK-72  
A. WELGE-59

# G. WESTERGREN-53 G. WINGSTROM-74 A. WULF-59

# EPSILON GAMMA TEXAS TECH UNIV

S. ASHLEY-77  
J. BAKER-70  
T. BARNETT-73  
J. CAMPBELL-74  
M. CORLEY-53  
T. CURRIN-68  
T. EYSEN-54  
R. FALK-67  
S. FRYE-74  
P. GRIFFITH-53  
K. HAYS-68  
R. HERREL-58  
K. HILL-57  
G. KNUST-65  
R. MEREDITH-75  
N. MONTGOMERY-53  
T. PARKETT-71  
B. POWELL-54  
H. PRICE-62  
J. PRUITT-63  
R. RAYBURN-72  
J. RICHARDSON-69  
E. SMITH JR-53  
J. SMITH-53  
R. SODNOW-61  
J. SPEARS-71  
A. SUMNER-61  
M. SWAFFORD-76  
F. TYLER-54  
G. VOLCAN-67  
J. WARD-71  
J. WEST-55  
C. WHITE-60  
P. WOODS-53

# EPSILON DELTA NORTH TEXAS ST UNIV

L. BAILEY-74  
N. DISHON-70  
G. JONES-55  
B. JONES-55  
K. JONES-76  
M. KLEPAK-59  
J. NEWMAN-64  
J. SIEGRIST JR-68  
J. WOLFE-55  
K. WOODS-78  
S. ZERINGUE-75

# EPSILON EPSILON TOLEDO UNIV OF

R. BORN-69  
S. DOLIN-69  
J. HAGE-63  
W. IKNER-68  
D. KELLER-55  
D. KINKER-55  
D. KLOTZ JR-55  
G. LONG-57  
W. SHINABERRY-61  
D. IGHE-66  
R. TURNER-59  
D. ZBINDEN-56  
T. ZIMMERMAN-55

# EPSILON ZETA EAST TENNESSEE ST

S. BOWMAN-77  
M. BYRD-70  
S. ELKINS-60  
W. FERGUSON-68  
J. GOSSE JR-55  
D. GRIZZLE-76  
C. HAGY-75  
R. HARRIS-69  
O. HENSLEY-73  
M. HERRON-63  
C. LOWANCE-69  
J. MAHONEY-64  
D. MOSELEY-67  
L. SOMMERHALTER-66  
S. WATSON-58  
D. WEAVER-72  
S. WILLIAMS-68

# EPSILON ETA HOUSTON UNIV OF

D. BELLJW-70  
W. CAMPBELL-54  
M. COLLINS-75  
J. CROMLEY-69  
D. HANCOCK-65  
G. HURLBURT-64  
M. LAWDER-69  
D. MCIVER JR-71  
C. MITCHELL-56  
K. ROGERS-69  
S. STEMBER-72  
R. STEVENSON-74  
G. TINDALL-58  
J. WISHEART-56

# EPSILON THETA COLORADO ST UNIV

J. BRASAEML-65  
P. BROCKDORFF-58  
C. CRAWFORD JR-71  
J. MEININGER-56  
D. PENN-71  
P. RIES-71  
J. ZIEBEL-71

# EPSILON IOTA SE MISSOURI ST UNIV

D. BREAK-73  
J. CARLTON-64  
G. CASEY-66  
B. COLLINS-58  
G. COMPAS-64  
R. COX-64  
R. ERLBACHER-67  
R. HAYBURN-75  
J. HUFF II-76  
J. JOHNSON JR-62  
R. LEGRAND-71  
J. LEIST-61  
R. LYNCH-64  
R. OVERMAN-67  
M. RENFRO-76  
K. STATLER-58  
N. STOWALL-78

# EPSILON KAPPA LAMAR UNIV

M. ARISCO-59  
J. DODSON-58  
D. DUNN-65  
W. DUNTON JR-60  
D. OYER-65  
J. GLANVILLE-58  
J. HARVARD-67  
G. JACKSON-65  
A. KEISER III-63  
L. MARTIN-60  
D. OLSON-65

# J. POWERS IV-60 P. RIZZOTTO JR-73 V. RIZZOTTO-75 E. RODE-58 V. SALTER JR-59 G. SCHROETER-79 J. THOMAS-73 K. WEAVER-76 J. WHEELER JR-61

# EPSILON LAMBDA MURRAY ST UNIV

B. ALEXANDER-61  
R. AVER JR-62  
R. BIVIN-65  
J. BURKE-72  
R. CAYCE-73  
R. DOUGLASS-67  
R. GOODMAN-73  
N. GORRELL-58  
K. HAMMON-68  
M. HESS-70  
H. HOUSTON-58  
D. LATIUS-72  
G. MAHONEY-73  
R. MITCHAM-72  
R. WALL-58  
D. NANNY-70  
D. PEARCE-75  
A. POLLOCK JR-58  
D. ROBINSON-74  
J. ROSE-60  
D. SHEARER-71  
D. SILVESTRI-72  
V. SIMMONS-65  
J. SMITH-75  
T. SUMMERS-66  
S. TRIBBLE-68  
G. VINCENT-75  
J. WEBER-75  
L. WICE-59

# EPSILON MU EAST CAROLINA UNIV

W. BAKER-58  
W. COX-60  
C. DODSON JR-64  
J. FAY III-68  
D. FITZGERALD JR-64  
J. MARASCO-67

# EPSILON NU GEORGIA ST UNIV

H. ALLEN JR-68  
D. AYERS-70  
J. BEISEL-63  
P. BLOUNT-60  
S. BUSH-68  
D. CARTER-76  
R. CORBETT-63  
W. COUGH-60  
T. DAVIDSON-73  
M. FRALICH JR-66  
J. FULLER-69  
W. GLASS-62  
S. LANEY-66  
M. MCCLAIN-72  
M. MCLENDON-69  
D. POST-62  
D. REED-72  
J. WARD JR-60

# EPSILON XI CASE WESTERN RESERVE

G. BARNES-62  
T. BAX-75  
F. BUSE-63  
G. CADA-68  
J. EMIG-61  
M. ENIKIEFF-72  
R. HALTER-64  
D. HUTENBACH-60  
J. KATZ-72  
G. LAWRENCE-60  
D. MILLER-69  
Z. MORRA-68  
G. MUELLER-66  
J. PERRY-67  
R. RICCARDI-66  
J. SOUTHWORTH-64

# EPSILON OMICRON STEPHEN F AUSTIN ST

J. BRIDGES-60  
B. CHANGE JR-76  
J. CROMLEY-69  
W. DARST-60  
W. LAWSON JR-62  
S. MADDOX-69  
C. MARSHALL-63  
J. METCALF JR-64  
G. MOBLEY-71  
T. PROUTY-70  
M. ROBINSON-76  
T. WARNER-61  
J. WEAVER-67

# EPSILON PI SAM HOUSTON ST UNIV

D. BONNER-74  
A. GOERLITZ-73  
L. HAMMER-66  
T. IDOM III-68  
M. MCCOY-79  
R. MERRILL-66  
J. PETERSON-65  
J. PRUITT-69  
W. ROMANE-74  
H. SCANLAN-67  
M. WILLIAMS-75  
H. WILSON-63

# EPSILON RHO IDAHO ST UNIV

D. ANKRM-61  
R. BLAKE JR-61  
J. BROWN-62

# EPSILON SIGMA TENNESSEE U OF-MARTI

V. AKINS-74  
W. BAILEY-67  
R. BASO-72  
P. BLAYLOCK-65  
R. BRUNDIGE-71  
J. CORBITT-68  
M. CRISWELL-68  
R. DANBY-68  
J. EDWARDS-63  
C. JACKSON-63  
W. MALDAN-68  
B. MCADOO-65  
R. MCADOO-69  
R. MISSIMER-71  
D. PIONKE-76  
T. SMITH-72  
L. SNIDER-72  
P. WHITE-61

# EPSILON TAU EASTERN NEW MEXICO

J. FRANKEN-72  
P. LAYTON-71  
J. MILLER-68

# EPSILON UPSILON GANNON COL

M. ALBAUGH-70  
T. BULL-67  
P. CHICATELLI-62  
J. COOGAN-74  
J. CRANE-62  
J. DIVINS-63  
J. DOBROSKY-70  
J. GRIFFITH-67  
J. HAINES-75  
M. HAUSER-75  
J. KUCZKA-72  
S. MANCINI-74  
J. MCINTIRE-62  
R. MURRAY-76  
M. OCHALEK-75  
T. PATERNITI-74  
J. PRUGAR-75  
J. RILSON-70  
T. WOZNIAC-64

# EPSILON PHI CENTRAL ARKANSAS U

G. ACRE-69  
K. BURENS-63  
D. BURKETT-70  
D. DUREN-73  
C. FORSBERG-63  
K. GILLESPIE-75  
J. GRAHAM-74  
J. KENLEY-70  
J. KELLY-73  
T. OPITZ-73  
J. REYNOLDS JR-70  
P. RYAN-66  
J. SYLAR-63  
R. WILSON-63

# EPSILON CHI KANSAS ST COL-PITT

W. BAKER III-65  
S. EHART-63  
F. INCHAM-68  
F. MATTEUCCI-63  
J. MICHAELIS-68  
L. ROMAN-74  
R. STINE-71  
G. TOPINKA-63  
M. TROXELL-67  
G. VERHAEGHE-70

# EPSILON PSI WESTERN MICHIGAN

C. BAUMANN-70  
M. BRADB-72  
F. FREY-72  
G. GLISAN-65  
F. LIVINGSTON-63  
G. SHARP-74  
J. TRONGEAU-63  
J. ZABINSKI-71

# EPSILON OMEGA EAST CENTRAL ST COL

R. CIRKA-71  
M. EWY-64  
A. FARRELL-71  
G. MCKOY-67  
J. PEAY-63  
H. WALDEN-76  
K. WILKERSON-69

# ZETA ALPHA GENERAL MOTORS INST

R. ANDERSON-68  
L. BUSEN-66  
D. BARNES-72  
D. BEMIS-71  
M. BEUGLER-68  
J. CLUMER-64  
J. DICKER-63  
D. DUCKWORTH-70  
D. DURHAM-70  
J. EBERLY-73  
D. ENDRIS-75  
D. FERGUSON-63  
J. FOSTER-70  
T. HENDRICKS-70  
K. HERRMANN-76  
HUNT-65  
G. JORDAN-71  
P. KARBON-72  
M. KATTERHEINRICH-70  
K. KREPPENHOFER-75  
H. KROM-63  
R. KUJANEK-75  
R. LUECKEL-70  
R. LUMSDEN-70  
J. MCCARTHY-75  
J. MILKS-70  
M. MURPHY-76  
K. OBERHOLTZER-70  
J. OJONWELL-71  
R. PIROG-67  
R. PORSZT-71  
J. RIEGER-73  
L. SABATINI-73  
J. SHUP-71  
D. SMITH-68  
D. SMOUSE-72  
J. SOLTIS-63  
R. SPIES-69  
J. STEPLETON-66  
P. TOW-73  
H. VERRELL JR-74  
C. VOMASTEK-74  
J. WEAVER III-71  
J. WHAITE JR-71  
C. WHEELER III-74  
W. WILSON-70  
D. WOODWORTH-71  
B. ZIELINSKI-68

# ZETA BETA DELTA ST UNIV

C. COLE III-71  
G. FOUNTAIN-73  
W. GREENLEAF-73  
W. HODD-73  
K. LEFTWICH III-70  
K. LOVE-72  
R. NEWTON-73  
P. RICKS MD-67  
P. SMITH-76  
L. TONEY JR-71

# ZETA GAMMA EASTERN ILLINOIS

D. BALANDA-74  
J. HARSCH-68  
J. HODGE-68  
B. HUBER-65  
W. JAEGER-64

# R. REYNOLDS-67 J. SCHOOLMAN-67 H. SEIVER-64 J. SLOAN-72 R. SUMMERS-64

# ZETA DELTA PARSONS COL

A. JOHNSON-64  
R. KEIM-71  
D. MAGEE-67  
P. MOORE-64  
A. PETERSCLU-64

# ZETA EPSILON WESTERN KENTUCKY

T. ALBANI-74  
G. GLEITZ-65  
M. HOLIAN-65  
A. MARKS-73

# ZETA ZETA SOUTHWESTERN ST COL

R. GRAY-67  
L. MILLER-68  
J. MJOSETH JR-73  
D. VANVRANKEN-71

# ZETA ETA ARKANSAS U-LITTLE RO

J. BINZ-70  
R. BURKHIGHT-70  
K. KOONTZ-68  
J. MATTOX-75  
J. MAYES-76

# ZETA THETA SM TEXAS ST COL

R. BARBER-71  
T. BARNHART-65  
J. BARNHART-70  
R. FAIREY JR-70  
B. HATFIELD-72  
T. LOTT-76  
R. OSBURN-68  
R. REYNOLDS JR-68  
W. RICHARDSON-73  
C. SCOTT-66

# ZETA IOTA OLD DOMINION UNIV

C. BARTHOLDMEW-69  
DIANE ITT-69  
K. GOLDSTEIN-66  
J. KERR JR-66  
J. KOSSMAN-67  
D. MCKURMAN-66  
D. MUSACCHIO-70  
R. OTTO-77  
J. PACE JR-69  
N. PINNEY-70  
J. RITCHEY JR-66  
M. KEESE-76  
R. SPENCER-67  
H. STAPLES-66  
T. TUITTE-69

# ZETA KAPPA FERRIS ST COL

W. COAN-76  
B. DAVIS-75  
B. ENDLIN-69  
G. FORTUNA-72  
R. GRAY II-71  
C. HADDON-70  
H. HANSEN JR-66  
T. HALL-74  
T. HARMS-73  
D. HENDRIE-72  
J. JACKMAN-70  
K. KARSTEN-66  
J. KOSTKA-71  
G. LONG-67  
A. LOVENDAHL-77  
J. OHANESIAN-69  
P. PENDER-73  
L. PRITCHARD-72  
H. ROY-71  
C. SCHABECK-67  
C. SNYDER-66  
H. SNYDER-71  
T. STANTON-66  
D. THOMAS JR-70  
R. TRAVIS-66  
D. TRESTER-69  
R. WALLACE-69  
R. WATSON-75

# ZETA LAMBDA ADRIAN COL

R. DAVIES-66  
M. GARDER-60  
R. PRUETT-69

# ZETA MU IDAHO UNIV OF

B. BABIN-66  
M. BRECHAN-66  
T. EIER-70  
W. ERSKE-66  
K. KLOKKE-72  
J. PETERSON-66  
C. WRIGHT-67

# ZETA NU EASTERN WASH ST COL

S. HOSSNER-71  
J. JOPLIN-73  
W. ODELL-66  
S. ROSS-72

# ZETA XI WESTERN CAROLINA

E. ALEXANDER-71  
D. CROBETH JR-67  
J. FOSTER-72  
C. FULLER-76  
L. KERR III-68  
L. KESLER-69  
J. KISER-68  
W. LEE-77  
C. NEUFELD-67  
D. PENLEY-72  
W. POWELL-67  
W. ROSS-72  
L. STEWART-67  
E. THOMPSON III-78  
C. WARD JR-70  
D. WILKINS-72

# ZETA OMICRON CALIF ST-NORTHBRIDGE

J. BASSLER-72  
B. HINDEN-68  
M. HOGAN-73  
J. MACARTHUR IV-67  
J. NIEHAUS-70  
J. POWERS-67



S. SCHWARTZ-75  
B. VALLENS-73

ZETA PI  
SOUTH FLORIDA UNIV

T. CURETON-70  
K. EVANS-73  
P. FOSTER-69  
A. GORDON-69  
C. HANDLIN III-70  
R. HDMAN-68  
S. MACKLER-69  
V. MORGAN-73  
P. PESTALOZZI-68  
S. SHOLTES-75  
M. SIMS-74  
W. VIA-72  
K. WILLIAMS-71  
D. YOUNG-68

ZETA RHO  
NORTH DAKOTA UNIV OF

T. CRUDEN-68  
L. DIDONATO-68  
R. FOSSUM-68  
B. HAUGEN-72  
R. HEANEY-68  
P. ROMANICK-69  
L. THOMPSON-68  
L. WONDER-70

ZETA SIGMA  
FLORIDA INST TECH

J. CARUSO-70  
C. CHIDDO-70  
R. GOEN JR-70  
E. HADDEN JR-68  
P. HANSON JR-76  
J. HUGHES-68  
E. KARLSON-76  
J. KEUPER-68  
J. MASTURZO-70  
M. MICHALOVSKY-72  
G. MURSTATT III-68  
G. PETRAE-76  
J. PREISSNER-69  
F. RICHARDSON-75  
R. SARKISSIAN-77  
E. SIDLOWSKY-69  
M. STEIN-78  
M. ZACCARDO-68

ZETA TAU  
EASTERN KENTUCKY ST

D. BOEH-70  
J. BORIN-69  
A. CROOK-76  
K. EARLEY-72  
P. GOLDSTON-70  
G. GOODAN-69  
R. IREY-74  
J. SHEETS-74  
W. WALL-69

ZETA UPSILON  
CONCORD COL

G. ALLEN-69  
G. BURLEIGH-69  
P. LITTLE-78  
H. MCNEAL JR-69  
C. ROBINSON-75

ZETA PHI  
MISSOURI UNIV-ST L

J. AUMILLER-71  
J. BLAHO-76  
R. GREENWAY-75  
J. STEURER-71  
G. VIEN-76  
C. WATTS-76

ZETA CHI  
SW MISSOURI ST UNIV

S. BUSCH-77  
J. COLLARD-69  
K. GREEN-76  
J. HOLT-69  
D. MURRAY-70  
P. ROBERTSON-72  
O. SHRYVER-72  
D. TOLSON JR-70

ZETA PSI  
NICHOLLS ST UNIV

R. BABIN JR-77  
S. BALTOODNO-70  
J. BROUSSARD-75  
P. DASSY-76  
D. DOWERY-72  
C. DUPLANTIS-74  
R. GUILLIOT JR-70  
M. HALL JR-73  
K. LANDRY-72  
T. PITTMAN-73  
W. PULLEN-71  
C. SWIFT-69  
K. ZERINGUE-71

ZETA OMEGA  
SW LOUISIANA UNIV OF

M. BARRIOS-71  
M. DORROR JR-71  
K. DUPLICHIN-75  
R. HAMMAKER-69  
M. MILEY-69  
S. REYNOLDS-71  
L. SCANTLIN-69

ETA ALPHA  
CLEMSON UNIV

J. ASTON-72  
F. CONRAD II-77  
C. DAVIS JR-75  
L. FREEMAN-70  
A. GREEN JR-71  
S. KLENGSON-76  
R. NOWACK-71  
A. PETERS III-72  
S. ROSS-73  
R. SHANNON-72  
J. TABOR-75  
G. WATKINS III-75  
E. WATKINS-74  
E. WILLIAMS-70  
J. WOODARD-76

ETA BETA  
SETON HALL UNIV

J. BAIER-70  
B. CEDRONE-75  
B. COLEMAN-74  
F. DEVITO-73  
P. FRESULANE-70  
G. GERLACH JR-70  
M. KIRSCH-70  
K. KRESKIN-77  
L. TRELEASE-70  
G. WALLACE-73  
T. WALSH-70  
B. WALWORTH JR-70

ETA GAMMA  
WINDSOR UNIV OF

R. KINNEAR-70  
D. PATERSON-70

ETA DELTA  
MASS INST OF TECH

H. CHEN-73  
D. DRISCOLL-74  
L. KLEIN-70

D. NOLET-74

ETA EPSILON  
ANGELO ST UNIV

L. BARBER-76  
M. BROWN-71  
S. CARRIGAN-72  
G. GLAESER-72  
J. HELIG JR-71  
R. MCKINNEY-71  
P. MERKEL-71  
J. ORSAK JR-71

ETA ZETA  
MIDDLE TENNESSEE ST

J. ALLEN-72  
T. KING-71  
G. MCCLARY-75

ETA ETA  
MOREHEAD ST UNIV

L. RIDENBAUGH-76  
C. ROBINSON-73  
J. SCHWAN-71

ETA THETA  
WEBER ST COL

J. HOSKINS-73  
J. WILKINSON-72  
T. WILKINSON-71

ETA IOTA  
WOODBURY COL

G. IMMEL-71

ETA KAPPA  
SOUTH ALABAMA UNIV

M. BRADLEY-71  
R. GAY-71  
J. GREEN-77  
A. HILL-76  
P. McMULLAN JR-71  
M. WARREN-77

ETA LAMBDA  
ROBERT MORRIS COL

R. GIONTA-72

ETA MU  
ARMSTRONG ST COL

J. BROTHERTON JR-71  
P. BRUMFIELD-73  
M. LARISCY JR-73  
J. RUDY-71  
J. SMITH JK-71  
J. STRICKLAND-72

ETA NU  
NORTHERN ILLINOIS

S. GEODAKIS-74  
C. GOELITZ-75  
J. GRAHAM-75

ETA XI  
ALABAMA UNIV-BIRGHAM

J. BAKANE-72  
M. DAVIS-75  
H. GWIN-72  
D. HARWELL-72  
J. JARRETT JR-72  
J. LEARD-75  
T. MACKINAW-72  
A. MUELLER-74  
J. ROBERTS-72  
J. SLEEMAN JR-74  
P. VAKAKES-74

ETA MICRON  
NE LOUISIANA UNIV

R. CHATAGNIER-74

ETA PI  
WESTERN FLORIDA UNIV

E. GIEBEIG-73  
D. KOHLENBERGER-75  
J. MASON-76  
F. NEWOMB JR-75  
R. SHAVER-73  
F. WATFORD-74

ETA RHO  
NORTH KENTUCKY ST

D. ANTROBUS-72  
J. BENDER-75  
S. GRAHAMHILL-76  
J. KIGER-72  
D. PLACKE-75  
J. SCHERKEK-76  
J. WEBSTER-76

ETA SIGMA  
WEST GEORGIA

J. LABOON JR-75  
S. MOORE-76  
R. NOONAN JR-72  
L. PEASE-75  
E. SMITH-74

ETA TAU  
AUSTIN PEAY ST UNIV

W. ALLENSWORTH-72  
W. BEETS-72  
W. BOYD-77  
C. BRIGGS-74  
M. CAMPBELL-75  
K. CONNELL-76  
W. DEMOSS-72  
P. FAULKNER-77  
J. GREENE-73  
M. HENDRICKS-72  
W. JOHNSON-72  
R. MARTIN-78

ETA UPSILON  
TEXAS UNIV-ARLINGTON

J. COCKSEY-75

ETA PHI  
U OF CENTRAL FLORIDA

R. LENTZ-76  
R. MATTOX-77  
P. SPLETTER-75

ETA CHI  
VALENCIA COMM COL

R. DAVIS-73  
S. NORDMAN-75  
S. PENNINGTON-74  
J. ROBINSON-73

ETA PSI  
TEXAS WESLEYAN COL

W. GLAZENER JR-76  
D. SHOCKLEY-73

ETA OMEGA  
PEMBROKE ST UNIV

C. HUBAY-74  
M. SAUNDERS-74

THETA ALPHA  
NORTH ALABAMA UNIV

D. MITCHELL-74

THETA BETA  
MONTEVALLO UNIV OF

J. ALLGOOD-74  
R. BRASHER-74  
W. CARRICO-75  
J. JACKSON-74  
P. WRIGHT-74

THETA GAMMA  
GEORGIA COL

W. FATUM-74  
C. GRIMES-74  
G. WOLFORD-74

THETA DELTA  
FRANCIS MARION COL

W. BLACKWELL II-74  
C. REYNOLDS-74  
W. SNOWDEN III-74

THETA EPSILON  
NE OKLAHOMA ST

T. COCKSEY-77  
T. REDDEKOPP-75  
D. WATKINS-76

THETA ZETA  
NORTHERN IOWA UNIV

G. FORMANEK-75

THETA ETA  
LOYOLA-MARYMOUNT U

D. CONSTANTINOU-76  
C. COOPER-76  
N. DAFFERN-76  
M. FALKENBALK-76  
K. NOEL-76  
G. SABALA-76  
W. SAYDEH-76

THETA IOTA  
TYLER JR COLLEGE

P. CORBETT-76  
M. MCCLUNG-77  
J. WINSTON-76

THETA KAPPA  
S E INDIANA UNIV

D. CCONS JR-77  
G. TYLER-77

THETA LAMBDA  
CREIGHTON UNIV

E. KUSEK-77

THETA MU  
MASSACHUSETTS UNIV

K. SCANNELL-77  
P. SHELDON-78

THETA XI  
EAST TEXAS STATE

C. BEAIRD-78  
R. BIRKES-78  
G. DENNISTON JR-78  
R. HACKER-78  
R. KEITH-78  
R. ROBERTSON JR-78

THETA PI  
ALABAMA U OF-HUNTSVIL

R. JOHNSON SR-79

# SHIELD & DIAMOND

If your address has changed, please fill out the following form and send to:  
Pi Kappa Alpha Headquarters  
577 University Blvd.  
Memphis, Tenn. 38112

## CHANGE OF ADDRESS FORM

Name \_\_\_\_\_  
Chapter \_\_\_\_\_  
New Address \_\_\_\_\_  
City \_\_\_\_\_  
State \_\_\_\_\_  
Zip \_\_\_\_\_

[Also enclose address label from this issue of Shield & Diamond.]



# ALUMNI



Lee Whittlesey and non-hibernating Old Faithful.

## Yellowstone Interpreter

TOUR BUS drivers who talk to the passengers about geology and wildflowers. Large tanklike over-the-snow coaches with drivers who talk to passengers about animals, birds and history. Tour guides who interpret hot springs and spouting geysers to park visitors in their native languages.

These are all part of Brother Lee Whittlesey's job at Yellowstone National Park.

Yellowstone is the first and oldest national park in the world and the largest national park in the United States. Over its more than three hundred miles of roads travel two and a half million visitors each year by bus, snowcoach, snowmobile or private auto. Whittlesey, a 1970 Beta Omicron (Oklahoma) initiate, teaches and evaluates the guides who give tours to these visitors aboard the Yellowstone transportation system. "What we do is perpetually interesting, sometimes downright exciting and always just plain fun," says Whittlesey.

Back in 1969, as a college student at the University of Oklahoma, he decided it would be great fun to work in a national park. He had vacationed in Yellowstone, so he applied and was hired as a laborer for the National Park Service. A couple of summers later he returned as a tour guide telling busloads of people about the scenery, animals, history and geology of Yellowstone.

Finishing school, he thought it was time to put all of that behind. So he spent a number of years talking over the radio at several different commercial radio stations. "But I never could quite get Yellowstone out of my system," he says. "In fact, I was still interested enough in this great wilderness area to spend a good deal of time in libraries ferreting out old books and documents on the place. It was the beginning of a research project that I'm still working on."

In 1976, he packed everything up and went back to Yellowstone to the Transportation Department as a tour bus driver. A couple of years later he

was "kicked upstairs" to the job of communications specialist.

His outfit hires some fifty tour bus drivers, twenty non-driving bilingual tour guides and thirty winter snowcoach drivers and cross-country ski guides. All of these people talk directly to park visitors about Yellowstone's complicated geography, geology, wildlife, plantlife and history. There is a lot to learn and just keeping up with it is not easy. Another part of what he does is monthly newsletters he publishes dedicated to staying on top of things at Yellowstone.

Yellowstone's guides are trained at the beginning of each season. The classes deal with various phases of park interpretation and problems the guides will encounter — how to get forty passengers checked into a hotel, what to do in the event of a snowcoach breakdown at twenty below zero, how to deal with ever

present questions like "Where are all of the bears?" and, of course, many facts, figures and statistics about Yellowstone itself.

Not only the new employees attend these classes. Even the "seniors" must attend for there is always something different to learn. Competition among guides is often keen for new facts and stories, and everyone is constantly monitored and evaluated.

"Our standards are quite high. Guides are tested over the material periodically, and it is a local joke that they never know when I'll board one of their vehicles just to listen, or to walk with their group around a geyser basin while they are talking about the thermal features. Of course I have trouble if the lecture is in Japanese or Hebrew."

One of the most stimulating parts of the job is the constant travel. While the snowcoaches stick mostly to park roads during the winter, the buses go many places outside of Yellowstone. Guides must be familiar with Grand



Teton National Park just to the south, for they also run a tour through it that begins at Jackson, Wyoming. Tours from the east begin at Cody, Wyoming, and include a fifty-mile stretch of road through the scenic and geologically complicated Shoshone National Forest. And tours from the north begin at Livingston or Bozeman, Montana, and include the beautiful Absaroka, Gallatin and Madison mountain ranges.

So Yellowstone tour guides must constantly read. Thus, Whittlesey is also a librarian who checks in, catalogues and maintains a large number of books, magazines and papers for the benefit of the personnel. Periodically he updates special information manuals which deal with the always changing scene in Yellowstone and Grand Teton National Parks. And he spends a lot of time reading and talking with park scientists and researchers in order to keep up with things going on, and in order to answer the constant stream of questions that arise from tour guides.

"A lady asked me today how Yellowstone compares in size to Israel. What is the answer?"

"I had to look that one up," says Whittlesey. "Yellowstone is one-half as big."

"A science teacher on board my bus asked me today what kind of life forms inhabit the geyser areas. What is the answer?"

"I knew the answer to that one, and I told the inquiring tour guide right over the telephone from my office. (Many kinds of algae that turn different colors with changing temperatures and bacteria.) After his group's lunch stop, he passed the word to his bus passengers. It made him look like he was doing his homework."

And of course there are always the questions that serve as a test of guides' abilities to keep straight faces:

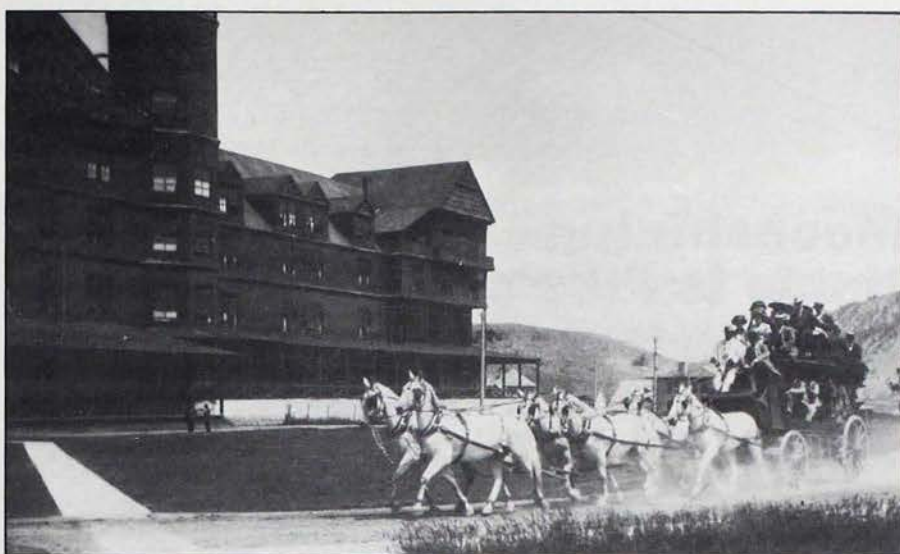
"When do the deer turn into elk?"

"Why don't they cut down some of these trees so we can see the scenery better?"

"Does Old Faithful go off at night (or in the winter)?"

They patiently explain. Tour guides are told in training that there will always be questions they cannot answer in a place as complicated as Yellowstone. They are expected not to make up stories but to find out the answer in order to know it next time. The guests respect honesty more than tall tales. Whittlesey addresses recurring questions in the monthly newsletter and eventually in the manuals.

Interpretation in Yellowstone



*Stagecoach visitors leave Mammoth Hot Springs Hotel in 1880's.*

Park involves both natural features and historic features. Each guide has Park involves both natural features and historical features. Each guide has areas where he or she is the strongest, but all are expected to know a smattering of everything.

Thus (and as a result of some fortunate years spent with the history literature), Whittlesey is also the company historian.

"I maintain and add to the transportation historical archives, and I'm always looking for park visitors whose fathers or grandfathers worked in Yellowstone in early days. Some fabulous old pictures and diaries have come my way in this manner. I also answer a lot of questions from other company departments about the history of the company and the park as a whole."

TWA Services, a division of Trans World Airlines, hires around twenty-two hundred employees during summer months to run its hotels, gift shops, restaurants, boats, horses and buses in Yellowstone alone. In winter the seasonal staff is much smaller and the jobs are harder to get. But both seasons offer incredible recreational opportunities to the Yellowstone visitor.

The winter visitor may ride one of our large snowcoaches or a small snowmobile into the Park where he can find some of the best cross-country skiing in the world. Buses connect to several downhill ski resorts as well — Jackson Hole (Wyoming), Big Sky (Montana) and Targhee (Idaho). All sorts of great winter vacation combinations are possible.

The summer visitor who tires of simple sightseeing can go fishing, boating, horseback riding or hiking. Yellowstone's magnificent back-country is some of the greatest

anywhere for backpacking or day hiking.

Occasionally, tour guides accompany hiking groups into the back-country. This type of interpretation can really be challenging and fun. Whittlesey sometimes goes along to help answer questions.

At the beginnings and endings of summer and winter seasons, TWA Services often becomes seasonally short-handed as many employees leave to return to school or to other places. "During these periods I sometimes find myself becoming a snowcoach driver, tour bus driver or tour guide. I never mind, for I consider this work the essence of the Yellowstone experience. One of the things I most enjoy about my job is showing the Park to someone who has never seen it before," Whittlesey adds.

As urbanization and technology spread across the face of a populated and often polluted nation, places like Yellowstone are becoming increasingly important as havens of rest. A traveler to Yellowstone in 1889 expressed his reaction to several weeks in the Park this way:

*Such experiences as these; such views of marvelous beauty, grandeur and sublimity; this freedom from contact with the sordid cares of everyday life; and the opportunity thus afforded of escaping, for a season, from the ever recurring problems and perplexities of existence, should make a man purer and nobler, and return him to his daily duties stronger and healthier; and in the preparation for the service he is to render to his fellow man, better and happier."*

This is the important mission at Yellowstone National Park. "And I am proud to be a part of it," confirms Lee Whittlesey.



## Moonshining Uncle is Pike's Bill Sanderson

ACTOR BILL Sanderson, Delta Zeta (Memphis State), set the mood early in *Coal Miner's Daughter*, the film about Loretta Lynn, with his oft-quoted line, "Mountaineers have only three choices in life: the mine, moonshine or move on down the line."

Brother Sanderson plays Lee Dollarhide — Loretta's moonshining, chicken-thieving uncle. Dollarhide is killed early in the moving during a moonshine raid, but his role during those mountain scenes is considered by some critics the best acting in the film.

Currently in Alberta, Canada, filming a movie that stars Lee Marvin, Brother Sanderson moved to California two years ago after co-starring on a PBS production *Pity the Poor Soldier*. He majored in business and later earned a law degree at MSU, but went straight to New York without taking his bar exam. He spent the next six years pursuing acting as a career.

Sanderson recently was seen in the Norman Lear-Alex Haley min-series *Palmerstown, U.S.A.* and in *Scared Straight — Another Story*, in which he played the part of a prisoner.

## Bottle Buster

DR. THOMAS T. Jones, M.D., retired from general practice since 1969, is still devoting his time to health. Not only does he work at a community health center in Durham, North Carolina, he's also composing his theories on alcoholism.

Back in the 1950's he was asked to do what none of the other practitioners would do — treat alcoholics. He responded by adding a telephone to his office and beginning therapy sessions.

"I started to see the intrinsic values in the personality patterns of alcoholics," he says, "to see how many of them did become very influential people."



Bill Sanderson

It wasn't long before he was absorbed in the undertaking.

Actually, Dr. Jones, a Beta (Davidson) chapter alumnus, started out with a simple general practice complete with house calls and mass inoculations back in 1934. Perhaps his early days as a child growing up in El Paso about the time of Pancho Villa prepared him for his later calling.

"I remember mama getting us down on the floor and bullets flying through when Pancho Villa would ride through," he explains.

## Never Say Die

SINCE BECOMING chief executive officer of tiny First Georgia Bank five years ago, Richard D. Jackson, Delta Iota (Marshall), has guided a turnabout from a loss of \$1.7 million to nearly a million dollar profit in 1979. Just 10 years ago, Brother Jackson was perhaps the oldest management trainee in the history of Memphis' First National Bank.

Jackson, a former football hero, war hero, fitness buff and award-winning speechifier, is the eternal



optimist who makes statements such as: "First Georgia has five percent of the commercial bank market in Atlanta. We've got 95 percent to go after. No other bank can make that statement."

An eight-year military stint and combat duty in Vietnam interrupted his career plans after college. A former marine led him to the First National Bank job in Memphis at age 31. Just six years later he was a vice president, but a smallish fish in a big pond. But then the First Georgia opportunity arose and he has been building another winner ever since.

## How to Keep an Annual Rite, an Annual Rite

FOR FIFTEEN years, Pike alumni have been enjoying the annual Summer Homecoming hosted by Alpha Kappa (Missouri-Rolla) Chapter Advisor and former National Officer Bob Wolf. Why do they keep coming back for more? Here's how his invitation reads:

*You are invited to:* arrive any time after 4:00 p.m., Friday, July 18 and leave any time before dark Sunday, July 20. If you can't be an overnight guest, plan to arrive in plenty of time to enjoy drinks, horseshoes, a swim, a tube float on the river and the world's finest barbecue on Saturday. Guests arriving by 8:00 a.m. Saturday can join in the great outdoor Ozark breakfast!

*We will provide:* beer, food, ticks, sun, chiggers, shade, beer, lemonade, lots of river water for recreation, some well water for drinking, some shelter, beer, a variety of toilet facilities, horseshoes, beer, food, volleyball and an opportunity to support the cost of it all!

*You provide:* a thirst, an appetite, Solarcaine, insect repellent, bedding, swim wear, toothbrush, soda (or "pop" if you call it that), some stories about the old days.

Brother Wolf includes a detailed map to find his riverfront property and a form to return. No doubt the volume of forms returned through the years from around the country are in direct proportion to the fun and fellowship alumni have come to enjoy at the Summer Homecoming.

## Kappa Toasts Golden Member

JOHN T. GENTRY, a 1930 initiate of Kappa (Transylvania), was toasted and roasted by his chapter recently as he received his Golden Chapter (fifty-year) certificate.

Also receiving certificates for fifty years of membership were Dr. Gentry T. Shelton, William Estes and Alfred Reece, Jr. Rev. John Barclay returned for the affair from Austin, Texas and received the oldest member certificate. Brother Barclay was initiated in November, 1913, and was largely responsible for pledging Brother Gentry, the honored guest of the evening. Brother Otis Falkenstein of Laguna Hills, California received the award for traveling the furthest to attend the ceremony.

## Initiation Draws Bay Alumni

SIXTY-SIX AND sixty-two years after their respective initiations into Alpha Sigma chapter (California at Berkeley), Emerson Herrick and Dr. Hubert Burden had the pleasure of attending another special rite.

The long-awaited initiation of Thomas Relles, an early sixties athlete who was too busy to be initiated, drew 41 Pikes to a dinner at the Sutter Club in Sacramento. Some of the Alpha Sigma members who schooled with Brother Relles organized the occasion.

Alpha Sigma's SMC Peter Kane, IMC David Volkmann, Resident Counselor Paul Swenson and undergraduate Peter Nauenberg with alumnus Russ Godt performed the initiation.

During dinner, eight alumni were given their fifty-year Golden Chapter certificates. Among them were Alpha Sigma Brothers Herrick, Burden, Harry Cobden and Clayton Davis, Gamma Epsilon Brother Willard Knowles, Beta Pi Brother Gordon Stafford, Gamma Eta Brother Ewing Hass and Gamma Xi Brother Allen Priest.

Two father/son teams attended: Brother Stafford and son John from Alpha Sigma and Roy Rusty Jacobes

and son Roy C., both from Alpha Sigma chapter.

## Like Father, Like Son...

NOW THERE are three generations of Dodds in Pi Kappa Alpha.

Alpha Delta (Georgia Tech) recently initiated Albert S., Dodd, IV. His father was a 1956 initiate at Xi (South Carolina) and his father became a member in 1932 at Alpha Alpha (Duke).

## Alumni Notes

NOTES ABOUT you or fellow alumni are welcomed. Send information to the editor, S&D, 577 University Blvd., Memphis, TN 38112.

## SUCCESS!

GET THE JOB, THE OPPORTUNITIES YOU DESERVE.

## The Career Planner

The Career Planner is a

- Job Search/Opportunities Organizer
  - Daily/Business Planner
  - Personal Record-Keeping System
- All in One Refillable Padded Binder.

Perfect for Anyone Pursuing Career/Business Opportunities.

"A useful gift for college students, recent graduates or anyone making a job change... a business/life planner."

— BOARDROOM REPORTS MAGAZINE  
April 21, 1980

Please include check or money order and mail to:  
The Dyson Company, Box 5762, Birmingham, AL 35259  
Allow 2 to 4 weeks for delivery. Money Back Guarantee.

Send \_\_\_\_\_ copies of The Career Planner  
\$14.95 (Save \$2) FREE shipping, insurance)  
Alabama residents, please add sales tax.

Name \_\_\_\_\_  
Address \_\_\_\_\_  
City/State/Zip \_\_\_\_\_  
School/Profession \_\_\_\_\_





Guests and officers attending the Birmingham Alumni Association Founders Day celebration last fall include, from left, President Dave Dyson, Past President Alvin Bressler, IKA Alumni Committee Chairman Judge Tom Wicker and IKA Past National Presidents Roy Hickman and Andy Knight.

## Books by Pikes

### Kreskin's Mind Power Book *The Amazing Kreskin* McGraw-Hill Book Co.

THE MOST popular mentalist of our time, Kreskin, Eta Beta (Seton Hall), has amazed millions with his feats of superior brainpower. His new book, *Kreskin's Mind Power Book*, (McGraw-Hill, New York), lets us in on some of his techniques for tapping the unused powers of the mind.

*Mind Power* helps the average person develop extraordinary concentration, memory, logic, creativity, self confidence and problem-solving ability. The reader learns how to use mental pictures and imagery to shape future actions; how to apply mind-conditioning skills to breaking bad habits, overcoming shyness and stage fright, upgrading performance.

Kreskin's original techniques and his personal way of describing them and their effects makes *Mind Power* a very readable, recommendable reference.

John Kaegi



Kreskin



Owens

### Chariots for Apollo James M. Grimwood National Aeronautics and Space Administration

MAN'S CURIOSITY for the unknown has often generated competition among those hungry for the knowledge; a timely example of this process is the NASA space program which culminated with the Apollo missions. The history of the Apollo program is the focus of a recent book, *Chariots for Apollo*, by James M. Grimwood, Alpha Pi (Samford).

The writing of a history of a program as extensive as Apollo is quite a task, because of the wealth of information that is available and necessary to publish in order for the complete story to be told. Facts, figures, jargon and specialized information must be sorted out and presented so a lay person can

understand. Brother Grimwood has done just that.

The major emphasis throughout the book is the group effort that was responsible for the success of the program. As General Samuel C. Phillips points out in the foreword, "Success could not have been achieved without having first succeeded in building effective teamwork in an environment where every task, no matter how seemingly insignificant at the time, in some way affected the ultimate outcome of the program." This is an important concept to remember in light of the outstanding and heroic action of some participants in the program.

For those interested, detailed and extensive appendices are provided, covering subjects from site selection to funding. Also included is a capsulized synopsis of each Apollo test and flight.

Brother Grimwood, obviously in command of the information, has prepared and presented us with a readable publication on a highly complex subject. Not only is *Chariots for Apollo* informative and easily digested, it represents a successful attempt to comprehensively cover an event of extreme historical importance.

Tom Mullender

### The Man-Made Landscape

Hubert Owens  
United Nations Educational,  
Scientific and Cultural Organization

WHY THE surface of the earth and its man-made landscape has developed the way it has is the storyline for *The Man-Made Landscape*. The book tells how man, through his endeavors of construction, has affected our land. In the process, the reader is transported from the gardens of Japan to the valleys of Tennessee.

Brother Hubert Owens authors a chapter within the book that deals with regional planning. He uses as his example of reference the Southern states of America from Texas to North Carolina, and in particular, the development of the Tennessee Valley Authority.

As with other chapters, Brother Owens gives a very enlightening historical perspective of the land and its people. Of special interest is how the social and educational progression of man has had such a major impact on the development of his land.

It is an interesting book that gives the layman a better understanding of why our land is sculptured the way it is.

John Judge



# NOTES

**ALABAMA AT BIRMINGHAM:** David J. Harwell, '72, (1005 Southridge Dr., Birmingham, AL 35216) is vice president of sales with Tubular Fabricating Co. Inc. in Birmingham. He is also an associate member of Alabama Peace Officers and an active volunteer with Red Cross safety programs.

**ARKANSAS STATE:** Jerry Mooney, '72, (6222 Thistlebrook Dr., Memphis, TN 38138) has been honored as one of the 1979 Outstanding Young Men of America and has been promoted into the management group of Touche Ross & Co. in Memphis.

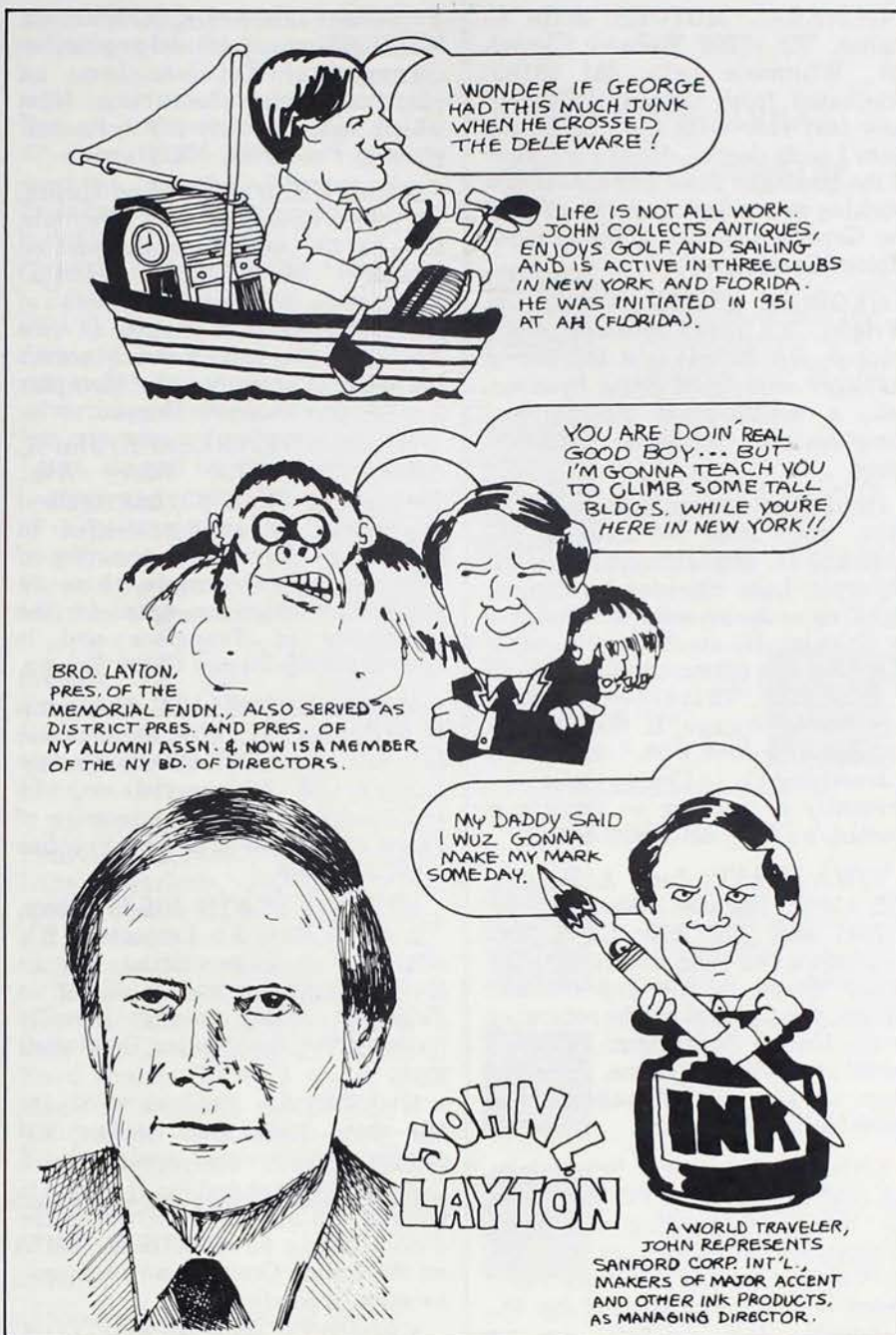
**BOWLING GREEN STATE:** Glen R. Foster, '72, (2186 Desota Ave., Cleveland Heights, OH 44118) is instructor and head athletic trainee at John Carroll University. He and his wife have two children.

**CASE WESTERN RESERVE:** Dave Harrold, '72, (835 Foresteria, No. 17, Lake Park, FL 33403) is an analytical designer at Pratt and Whitney Aircraft Group products division in West Palm Beach working on the combustor/augmentor for the F100 engine which powers the F15 and F16... Edward J. Missik, Jr., '72, (24134 Fairlawn Dr., N. Olmsted, OH 44070) was recently promoted to planning manager, industrial chemicals, for Vistron Corp., a subsidiary of Sohio. Ed and his wife Pat have one son.

**COLORADO:** John R. Berry, '58, (50 Magnolia Ave., Larchmont, NY 10538) has been elected to the Board of Directors of AFS International/Intercultural Programs, one of the oldest and largest student exchange programs in the world.

**DELTA STATE:** Kirby A. Love, '72, (P.O. Box 69, Glen Allan, MS 38744) recently celebrated his fourth year as owner of Love's Supply Co. in Glen Allan, Ms. He is also a franchised jobber with Parts, Inc. located in Memphis, TN.

**FLORIDA:** Richard Sewell, '53, (2930 Northampton St., N.W., Washington, D.C. 20015), Washington, D.C. representative for the Florida Power and Light Co., was named a Distinguished Alumnus at Florida's recent commencement. He is president of the Business-Government Relations Council and



Illustrations by Bob Shettlesworth

president of the Washington Representative Research Group... Douglas White, '72, (P.O. Box 4852, Clearwater, FL 33518) is comptroller at Charlie Harris Pontiac in Clearwater... George DiFerdinando, '72, (19950 S.W. 280th St., Homestead, FL 33030) graduated in May from the University of Houston College of Optometry with a Doctor of Optometry degree.

**FLORIDA INSTITUTE OF TECHNOLOGY:** Dr. Ray A. Work, '68, (1105 S. Riverside, Indiatlantic, FL 32901) is vice president of administrative affairs at F.I.T.... Charles E. McShane, Jr., '72, (251 Main St., Spotswood, NJ 08884) is a supervisor for Aetna Life and Casualty in the North Jersey Branch claims department. He and wife

Sherry have one daughter... Marc Michalovsky, '72, (10-17 Oxford Dr., Valley Cottage, NY 10989) graduated in February from Pace University with an MBA in financial management. He is now working with IBM as a financial analyst in their cash management operations.

**FLORIDA STATE:** Richard M. Miller, '72, (13136 S.W. 93rd Place, Miami, FL 33176) is currently working as an accounting manager at Cordis Corp. based in Miami. He recently returned from three weeks in Europe.

**GANNON:** Gary T. Knapp, '72, (4617 Darcie Dr., Erie, PA 16506) is employed with a residential treatment facility dealing with emotionally disturbed children in Erie, PA.



**GENERAL MOTORS:** John C. Rahie, '72, (7292 Webster Church Rd., Whitmore Lake, MI 48189) graduated from Detroit College of Law last year with a Juris Doctor Cum Laude degree. He is a member of the Michigan State Bar and is now working as an attorney in the office of the General Counsel of the General Motors Corporation.

**GEORGIA STATE:** Vernon L. Wright, '72, (3445 Montreal Way, Tucker, GA 30084) is a marketing manager with Solid State Systems, Inc., a middle-sized international computerized systems manufacturer.

**INDIANA:** Gary Doerfler, '72, (Apt. 501, 1660 N. LaSalle St., Chicago, IL 60614) recently joined Shearson Loeb Rhoades Investment Banking as an investment executive in Chicago. He specializes in estate planning and option trading... Mark S. Hazeltine, '72 (1313 itchie Court, Apt. 1604, Chicago, IL 60610) is an account executive with Leo Burnett Advertising Co. in Chicago, where he presently is working on Procter & Gamble's Cheer detergent brand.

**IOWA STATE:** Judd A. Brasch, '72, (1037 Rachael, Waterloo, IA 50701) and his wife Cindi will conclude a two-year service with the Peace Corps in the Ivory Coast, Africa, this fall and will be returning to the United States after extended travel on their way home. Judd has been working as an architect and Cindi in health services.

**LEHIGH:** Kramer J. Schatzlein, '35, (305 Springhaven Pl., Macungie, PA 18062) is traveling and doing environmental consulting for the Portland Cement Association... Peter N. Skinner, '67, (142 Jay St., Albany, NY 12210) is an environmental engineer for the New York State Attorney General... Frank J. Wilk, Jr., '69, (12 Oriole Dr., Woodstock, NY 12498) is director of materials management for Stiefel Laboratories Inc.... Robert C. Williamson, '65, (RD 7, Woodland Dr., Bethlehem, PA 18015), a professor at Lehigh, is a member of five committees there and is now completing the revision of a textbook as well as other research projects. He is the father of two sons.

**LOUISIANA TECH:** Robert E. Shadoin, '72, (P.O. Box 1656, Ruston, LA 71270) is pleased to announce the formation of Shadoin & Bleich, Attorneys at Law, of Ruston, Louisiana. Shadoin is also serving as chapter advisor for PiKA's Gamma Psi chapter.

**MARYLAND:** David A. Crow,

'72, (4505 Feldspar Dr., Middletown, MD 21769) was appointed production manager of Tri-Com Inc., an electronic manufacturing firm which recently moved into its new plant in Frederick, Maryland.

**MEMPHIS STATE:** Lou Gatlin, '49, (2655 Greenmill Dr., Memphis, TN 38138) was recently elected president of NARDA (National Association of Retail Dealers of America). He is a partner in Ace Appliance Co. and currently serves as chairman of the board of Memphis Area Better Business Bureau.

**MIDDLE TENNESSEE:** Jim K. Allen, '72, (1700 Moore Ave., Greeneville, TN 37743) has received his master of science degree in agriculture from the University of Tennessee. He is employed as an agriculture extension agent for the University of Tennessee and is married to the former Cathy Susong.

**MISSISSIPPI STATE:** Hampton D. Williams, '71, (2606 Lindenwood Dr., San Angelo, TX 76901) recently completed his residency in anesthesiology at the University of Texas and is now in private practice in San Angelo.

**MURRAY STATE:** Bill Fletcher, '72, (P.O. Box 30, Princeton, KY 42445) is now practicing law in Cadiz, Kentucky and is living in Princeton after having recently moved from the greater Cincinnati area.

**NEBRASKA:** Charles E. Saab, '72, (3019 Titus Ave., Omaha, NE 68112) recently completed Marine Corps enlistment and has returned to Omaha. As part of the crew on the USS Midway, he spent three months on the Indian Ocean as an electronic aviation specialist.

**NICHOLLS STATE:** Ronald P. Morlier, '72, (119 Broadmoor Court, Vacaville, FL 95688) is a captain in the US Air Force and is presently stationed at Travis AFB, California, flying international military transport aircraft.

**NORTHERN IOWA:** Jim Lingo, '76, is married and living in Waterloo, Iowa, where he is employed by Hy-Vee Stores... John Peglow, '76, (200 Dickman Rd., Des Moines, IA 50315) is an account manager with NCR. He sells and installs processing systems for banks and savings and loan companies in his district...

**NORTHWESTERN:** Frederick L. Koplin, '72, (549 Brompton, No. 1, Chicago, IL 60657) has been promoted to account executive with Needham, Harper and Steers Advertising Inc. in Chicago... Dan B.

McCullar, '72, (575 Market St., San Francisco, CA 94105) is working for Chevron Overseas Petroleum and is on a two-year assignment in Khartoum, Sudan.

**OKLAHOMA:** John Baker, '48, (5 Pebblebrook Circle, Richardson, TX 75080) is district manager for Carrier Air Conditioning, machinery and systems division... Andrew Coats, '54, is the Oklahoma County District Attorney and has announced plans to run for the U.S. Senate... David P. Hail, '67, (11011 Wye Ave., San Antonio, TX 78217) is vice president of Titan Industries, Inc., and President of the Texas Automobile Jobbers Association... John D. Hope, '72, (701 South Fifth, Purcell, OK 73080) is co-owner of Hope True Value Hardware in Purcell, Oklahoma... Dr. Vance Jennings, '47, (725 Grand Circle, Temple Terrace, FL 33617) is chairman of the music department at the University of South Florida... Marvin Oxley, '56, is vice president and manager of exploration for Tideway Oil Programs... Rodney Templer, '68, is a territorial sales manager with the Keebler Company.

**PENNSYLVANIA:** Martin J. Conroy, '72, (Route 1, Box 62, Sanford, NC 27330) and his wife Flo and their two sons now live in Sanford, North Carolina, where Marty is an accounts payable supervisor with Stanalyne Inc. His wife is a physical therapist at Lee County Hospital... Mitchell D. Goldsmith, '72, (180 E. Pearson St., No. 4406, Chicago, IL 60611) has become associated with the Chicago law firm of Sachnoff, Schrager, Jones, Weaver & Rubinston, and is specializing in the areas of corporate securities and taxation law.

**PENN STATE:** Robert P. Carver, '53, (21 Balmoral Ave., Matawan, NJ 07747) is the U.S. supply coordinator of commercial staff services for Mobil Oil Corporation... Joseph G. Ebner, '61, (1706 Elmhurst Dr., Whitehall, PA 18052) was recently promoted to manager of the payroll procedures in the employee costs division of Bethlehem Steel Corp... John C. Ferm, '45, (3203 Bratton St., Columbia, SC 29205) is a professor of geology at the University of Kentucky... Frank W. Glading, '17, (1339 Olive St., Coatesville, PA 19320) is a retired teacher and chemist who enjoys playing a lot of golf these days... Mark B. Sturgeon, '73, (1911 Indianola Ave., Columbus, OH 43201) is a financial and budget analyst for the chemical division of Borden, Inc... Lawrence E.



**Wilhelm, '72**, (Route 1, Box 255 Masemore Rd., Parkton, MD 21120) is president of Friendly Farm, Inc., a restaurant in Upperco, Maryland.

**RICHMOND: William Stone, '72**, (1302 Santa Anna Rd., Richmond, VA 23229) recently became a licensed optician in the state of Virginia and is currently employed by Sealey Optical Laboratory as supervisor of grinding procedures.

**SAM HOUSTON STATE: Joe W. Franklin, '72**, (16700 Kuykendall, No. 406, Houston, TX 77068) was recently promoted to petroleum landman for Tenneco Oil Co. He was initiated at Epsilon Pi chapter in 1972 and was a founding member of Theta Theta (Texas A&M) in 1976.

**SOUTHEAST MISSOURI STATE: Wendell P. Black, '50**, (Oakenwold, Cape Girardeau, MO 63701) is an insurance broker with First Cape Corporation... **James Emas, '62**, (8043 W. Plymouth Place, Littleton, CO 80123) recently moved to Littleton, Colorado, where he is working as an architectural and dealer representative with W. R. Grace & Co. He and his wife have three children... **Ron Haywood, '75**, (3676 Middlefield, Apt. 8, Indianapolis, IN 46222) and his wife Dianne recently moved to Indianapolis where Ron is employed with Liberty Mutual Insurance... **George Lepchenske, '62**, (P.O. Box 181, Tsale, AZ 86556) is dean of instructions at Navajo Community College in Arizona... **John A. Johnston, Jr., '62**, (4655 Marquette

Cr., Springfield, MO 65807) is working with Roadway Express as an assistant manager. He and his wife have three children... **Larry Roberts, '72**, (321 S. 12th Street, Wymore, NE 68466) is currently working at the Beatrice State Development Center as an assistant director of recreation for the mentally retarded and handicapped.

**SOUTHWEST MISSOURI STATE: Barry E. Johnson, '72**, (230 Straight Oak, Ballwin, MO 63011) is currently in charge of business advertising for Southwestern Bell at the company's headquarters in St. Louis. He and his wife have one son.

**STETSON: Padge Dorne, '72**, (P.O. Box 340, Palm Coast, FL 32037) graduated from University of Florida College of Dentistry in 1979 and is now practicing in Palm Coast.

**SYRACUSE: Dennis Wesolowski, '72**, (300 E. Main St., Frankford, NY 13340) is working in Utica, New York as a computer techniques specialist for General Electric Corporation.

**TENNESSEE: Robert R. Pearson, '72**, (3900 - 10 Cornerwood Lane, Charlotte, NC 28211) has opened a sales office in Charlotte for NCR Comten. Comten is the communications products division of NCR and the Charlotte office is responsible for marketing efforts in both North and South Carolina... **Boyd Smith, '72**, (118 Rustic Trail Rd., Birmingham, AL 35216) is a commercial loan officer with the First National Bank of Birmingham.

## MEMORIAL FOUNDATION MEETING

(Clip out and mail)

Notice is hereby given of the Annual Meeting of members of the Pi Kappa Alpha Memorial Foundation, which will be held at 577 University Boulevard, Memphis, Tennessee, 38112, September 27, 1980, at 10:00 a.m.

Richard Ogle, Secretary

THE PI KAPPA ALPHA MEMORIAL FOUNDATION  
577 UNIVERSITY BOULEVARD  
MEMPHIS, TENNESSEE 38112

I hereby designate and authorize Patrick Halloran or \_\_\_\_\_ to vote in my proxy at the meeting of the members of the Pi Kappa Alpha Memorial Foundation in Memphis, Tennessee, September 27, 1980.

DATE: \_\_\_\_\_

SIGNATURE: \_\_\_\_\_

(Print Name under Signature)

NOTE: Members and relatives of Pi Kappa Alpha who have contributed twenty-five dollars or more to the Pi Kappa Alpha Memorial Foundation are voting members.

## PI KAPPA ALPHA FRATERNITY JEWELRY



MONOGRAM BUTTON  
GOLD FILLED  
(MG/11) \$ 5.00



LAVALIER, Vertical Letter  
10K Gold Chain w/18" Gold Filled Chain.  
(3LL/02V) \$13.50

LITTLE SISTER PINS  
Badge Outline with  
Crest. Gold Plate.  
(LS/40) \$ 8.00



## BADGES



SIZE #1  
Plain Bevel Border 10K  
Yellow Gold.  
(#111) \$18.00



SIZE #2  
Plain Bevel Border 10K  
Yellow Gold.  
(#211) \$20.40



SIZE #2  
Alternating Pearl & Ruby  
10K Yellow Gold.  
(#233) \$54.60



SIZE #3  
Alternating Pearl &  
Garnet. 10K Yellow  
Gold.  
(#340) \$63.60

## CHAPTER GUARDS



PLAIN  
#62



PEARL  
#65

1 Letter  
2 Letter

\$12.00  
16.50

\$26.00  
38.00

Full color complete price list.

J. O. POLACK co.

1700 Irving Park Rd.  
Chicago, IL 60613





**Bic side**

**Trac II side**

**We asked men to compare the 19<sup>3</sup>/<sub>4</sub>¢ Bic  
and the expensive Trac II.**

**"I can't tell  
the difference."**

We want you to know the surprising results of a recent test.  
Surprising to you, not us.

A random group of men were asked to compare the Bic  
shave and the more expensive Trac II® shave.

For fairness, the men were blindfolded and shaved by barbers.

*The result: 58% found the Bic shave equal to, or  
better than, the Trac II shave.*

Every consumer has the right to know this. It's not a  
claim, it's a hard fact.

**5<sup>0</sup> BIC  
SHAVERS**

**Why pay the difference  
when there's no difference?**

